

# ① Favourite

- really well used during lockdown.
- lots of families use this space.
- neighbours enjoy overlooking park & all the activity.
- there are regulars
- walking gps.
- Kids w/ bikes.

- lack of risk from traffic.

constraints

\* Sports park is very difficult to <sup>get</sup> access<sup>to</sup> by bike - its a sports park!

ability to move around safely.

More designated pathways to accommodate diff users.

Surrounding streets are busy. Maybe could accommodate carpark onsite.

Flexi ~~to~~ parking to accommodate busy times

→ Nice & serene people sit & rest meditate

→ a good mixture something for everyone.

- Sports w/ grandkids

- informal activities & play w/ grandkids

- accessible for older people.

\* Don't want traffic thru the park.

## ② Opps.

- Sensory gardens in maintenance shed area interactive - currently in Splash Planet

### Experiences.

Frimley Rd very busy - often see birds <sup>people taking</sup> out of car seats on road side.  
danger } also difficult for older people accessing park safety aspect / better access.

Toilets - not enough. / is it in the right place?  
opening hrs?

70-80% visitors come by car.

Passive recreation

Play  
+  
Experience.

- Educational opps / listening apps  
names of trees / history of trees
- ⇒ Mural on pumping building of the family home.
- ⇒ layers of modification over time.  
would be good to reflect that

layer  
up the  
stories

③ One of the best rock finding places.

→ could we put little markers around

→ love the maize.

OPPS

Accessing parks

Frimley Road - pathways

Lyndhurst - has a path but  
conflict on busy days.

Movement through the park?

Frimley Road - is there a main entrance  
yes but most people don't use it.

Lindisfarne College - a lot of congestion  
on sports days & school day.

Soccer creates a lot of parking -  
minifields - a lot more use.

Frimley more busy.

Lyndhurst got busier since Sports Park  
Edge treatment.

## ④ Gateways.

Bike parking - encourage this.  
Tall ones for elderly  
Shorter ones for kids

Edge parking → what does that  
do to the character

maintain character/heritage  
value.

→ car parking integrated with park but  
not into through park.

Bikes/ <sup>other</sup> through park OK.  
modes

Sunken gardens - not well known  
v. quiet / secretive

Create Promenade effect through  
sensory gardens to homestead.

Layer story of place through planting.  
Heritage fruit trees? by old homestead?

5

Heritage can be told through fruit.

"100 miles of orchards" look about  
beginning of canning industry.

Improve the pallet of planting in the  
park.

Natives?

Manuhiwi -  
The bird embankment

"relaxed"  
"romantic"  
"laidback"  
"wandering"

One river breaking into 2

Makiri Makaramu.

Putuhiri - to carry heaps  
relating to flax production

## App Facilities

More of  
a "move  
through"  
park

Could encourage more picnickers.

BBQ's? does encourage a diff demographic  
vibe.

There's plenty of other  
spaces for bbqs.

Tables? Could have more of these.

⑥

Fenced off area for dogs. # No.

Keep dogs on lead.

Keep relaxed feels.

Rotary (Stortford) very keen to support a sensory garden in the Park (funds/work)

Toilets - tired / location? } want them where  
playground? } there's passive  
sportsgrounds? } surveillance.

Cohesion -  
integration

waterpark

Expanding play -



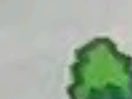
could include waterplay.

"Amphitheatre" - supporting infrastructure would need to be provided.

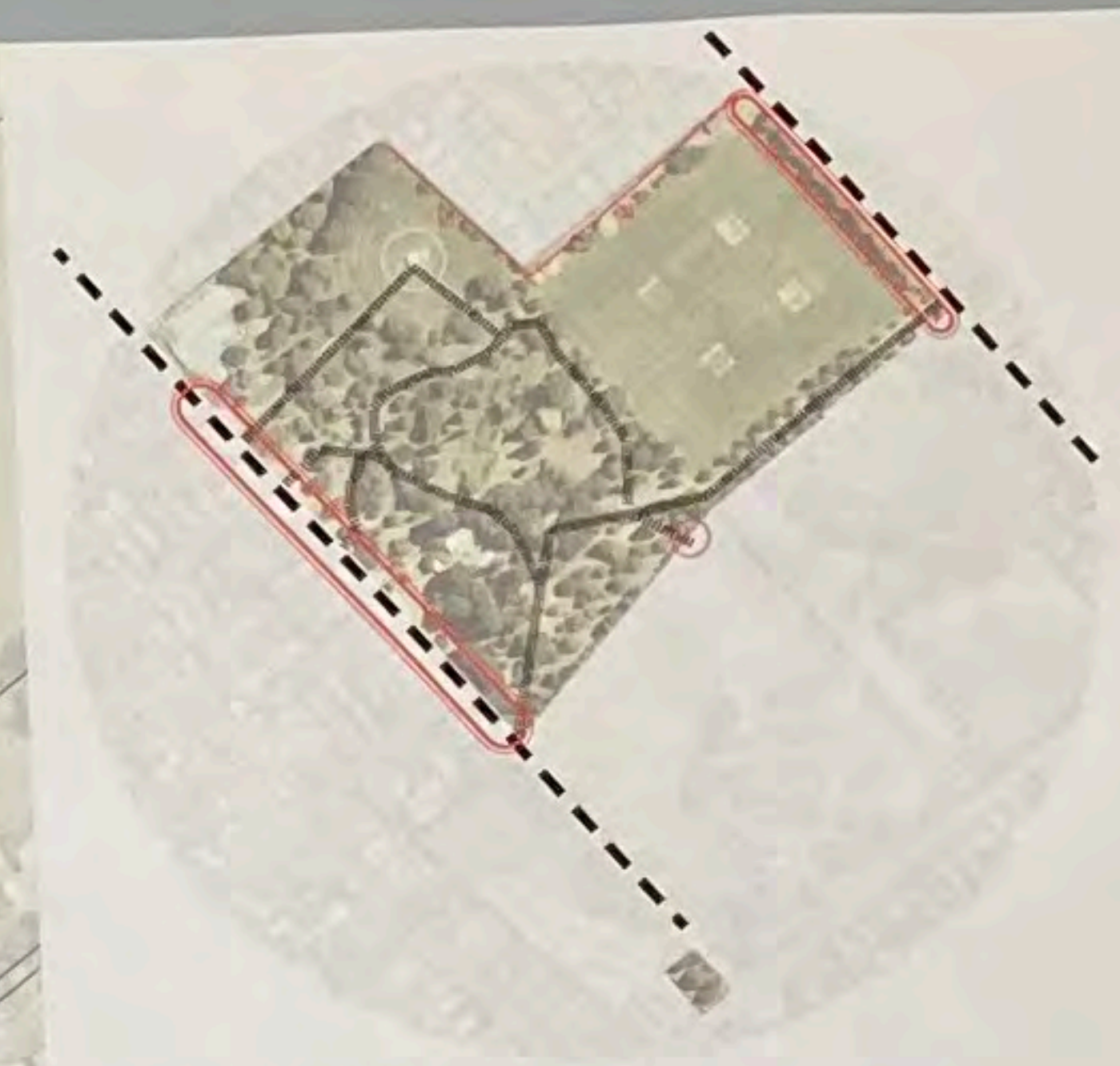
activate community

teaching/ performance

little space for informal education; small events

-  Toilet
-  Playground
-  Notable Trees  
(Operative District Plan March 2020)

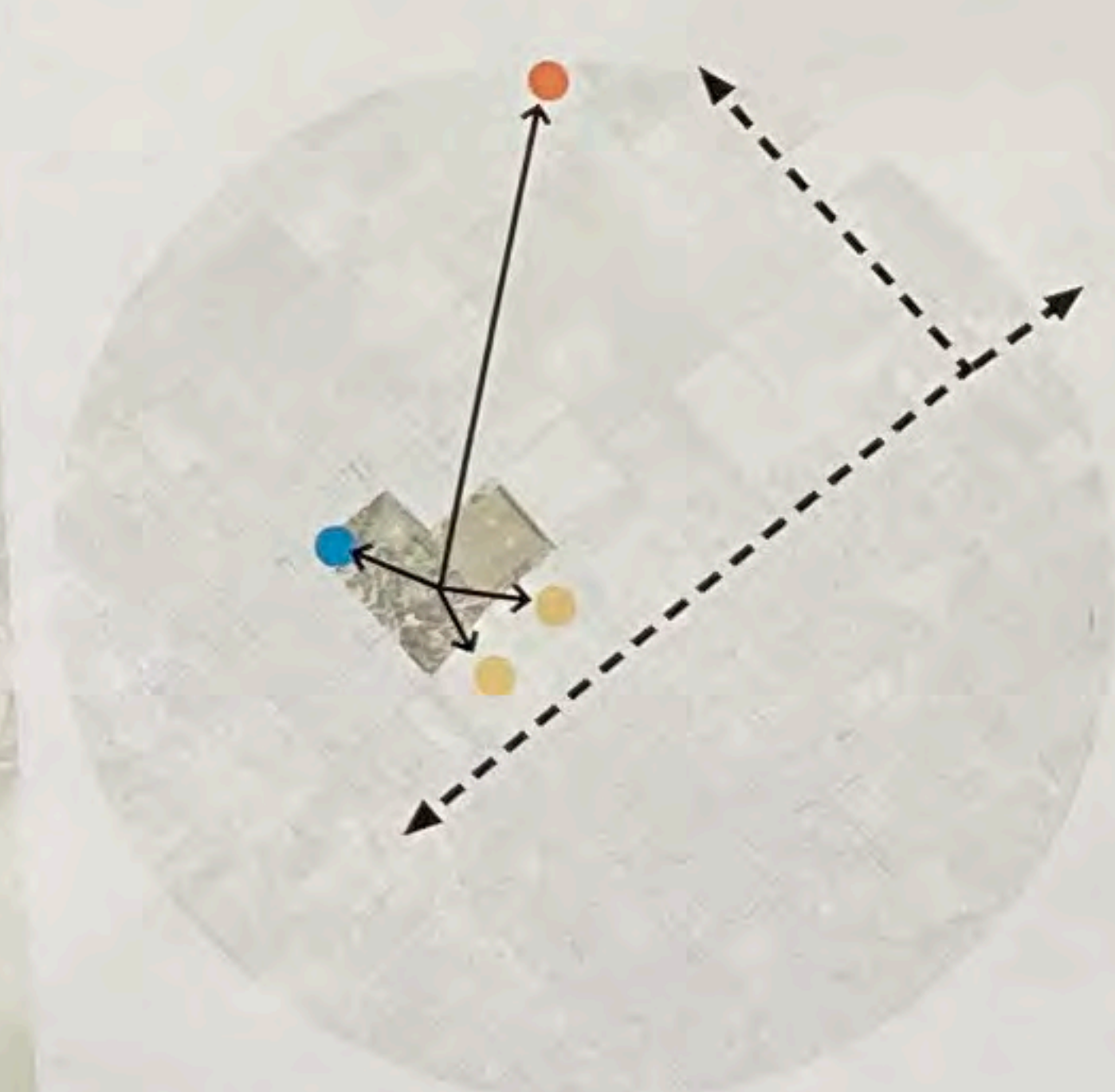




**MOVEMENT**  
○ Entry  
- - - Vehicle  
— Pedestrian

**NATURE**  
● Mature specimen (feature) trees

*Heritage*



**CONNECTIONS**  
- - - Napier / Hastings CBD  
● Hastings Girls' College / Lindisfarne College  
● Frimley Pools  
● Hawke's Bay Regional Sports Park

**ACTIVITY MIX**  
● Play / active open space  
● Passive recreation space with formal gardens and mature trees



**VALUED FEATURES**  
● Sunken Garden  
● Rose Garden  
● Sports Fields  
● Playground  
● Mature trees  
● Frimley Pools

**FRIMLEY PARK  
VALUES**