



Keirunga Gardens Draft Tree Management Plan

ADDENDUM REPORT



HASTINGS
DISTRICT COUNCIL

Background

The Hastings District Council prepared the Keirunga Gardens Draft Tree Management Plan in 2018. The desire for a tree management plan arose from Council's concern over a growing history of tree failure in the Arthur's Path area and the desire to have an agreed planting plan for future tree replacement. An initial concept, suggested by retired local nurseryman Chris Ryan, was presented to Landmarks Advisory Group prior to it being presented to a community meeting in the Community Centre. Positive feedback from this engagement process signalled to Council to proceed with developing a new landscape concept. The draft plan was developed and released as a consultation draft on 6th December 2018. To date it has drawn wide feedback.

During the consultation phase, Council also commissioned an independent arborist report on the condition of the trees in Arthur's Path woodland area and to offer a review of the draft plan. Council undertook this peer review to ensure its future decision making was robust and based on best practice.

The peer review, prepared by Arborlab, a nationally respected arboricultural consultancy, has been completed. Council now wants the community to be aware of this report and has made it publicly available for information and feedback purposes, particularly given it provides an alternate view.

Addendum Report

This addendum report summarises and compares the key features of the consultation document (Keirunga Gardens Draft Tree Management Plan) and the key features of the Arborlab peer review. While both reports identify the same or similar challenges in dealing with the tree stock in Arthur's Path, Keirunga, they differ markedly in their recommended approach to dealing with the tree stock and in particular the large oaks.

The following table 1, identifies the key themes surrounding the management of the woodland area and shows how the two reports either align or differ.

The key themes addressed by the two documents include;

- Woodland nature of Arthur's Path
- Tree maintenance
- Tree removal
- Weed tree removal
- Replacement tree species

This addendum report also contains an additional landscape plan that captures Arborlab's recommended tree removal actions. The Arborlab plan has been reproduced in the same scale as the consultation draft plan, to assist interested members of the community to compare the two different approaches and assist them in making submissions to the draft tree management plan.

TABLE 1

KEY THEMES	DRAFT PLAN'S RESPONSE	ARBORLAB RESPONSE
Woodland nature	Recognises the woodland character of Arthur's Path as a natural area. Recommends rapid change to introduce new tree species to create a more diverse arboretum of specimen trees.	Supports the woodland concept and recognizes the difficulty in establishing new trees amongst existing large trees. Recommends retention of existing trees with the slow removal of less significant trees to allow for a gradual long term succession planting programme. New plantings to support overall woodland concept with appropriate tree species.
General Tree Maintenance	General tree maintenance should be increased, especially with new juvenile plantings. Recommends annual inspections of tree health and programmes monitored and actions reviewed annually.	General maintenance carried out annually. Irrigation installed for new plantings. Also recommends three yearly inspections by suitably qualified arborists.
Tree Removal and Pruning	Recommends removal of 46 oak trees and 48 other varieties or species over three years.	Identifies 77 significant trees of which 23 require immediate crown reduction and/or pruning. Also recommends the removal of 23 trees (including 18 oaks) over a ten year period.
Weed tree removal – Groups	No removal number is specifically stated, however recommends the removal of poorly formed trees in general, which would include weed tree species.	Recommends additional removal of four groups of poorly formed and/or self sown "weed trees" (72 trees) These include casuarina, robinia and poorly formed oaks. The removal will create new spaces for replacement trees.
Replacement tree species	Recommends the introduction of an extensive range of new trees to create a diverse and colourful arboretum style woodland. Includes both trees and shrubs that are evergreen, deciduous, native and exotic.	Recommends that proposed tree list is reviewed to ensure replacement trees chosen are shade tolerant and will attain large dimension to fit appropriately into the woodland nature of the area.

Summary

The draft tree management plan that is currently being publicly consulted on, recommends a bold approach to tree management in the Arthur's Path woodland area of Keirunga Gardens. The plan responds to some concerns over the age, health and desirability of the tree stock. The draft plan recommends the removal of approximately 90 mature trees and numerous undesirable self-sown trees over three years (Appendix 1). While the plan also recommends a large scale replanting programme, it could, (if implemented) significantly change the look and feel of the woodland area.

In contrast the Arborlab peer review of the plan recommends a conservative and staged approach to tree management (Appendix 2). It recommends pruning and crown reduction to extend tree longevity. While it identifies the removal of 23 trees, of which 18 are oak trees, this quantity is much less than the draft tree management plan's recommendations for tree removal. Arborlab also recommends they be removed over a much longer ten year period in order to preserve and maintain the current valuable woodland character. The proposed plantings would aim to maintain a similar character of the area over the long term.

Next Steps

Council has decided to extend the public submission period to give the community additional opportunity to read the peer review, consider this addendum report and respond to the content and alternative findings.

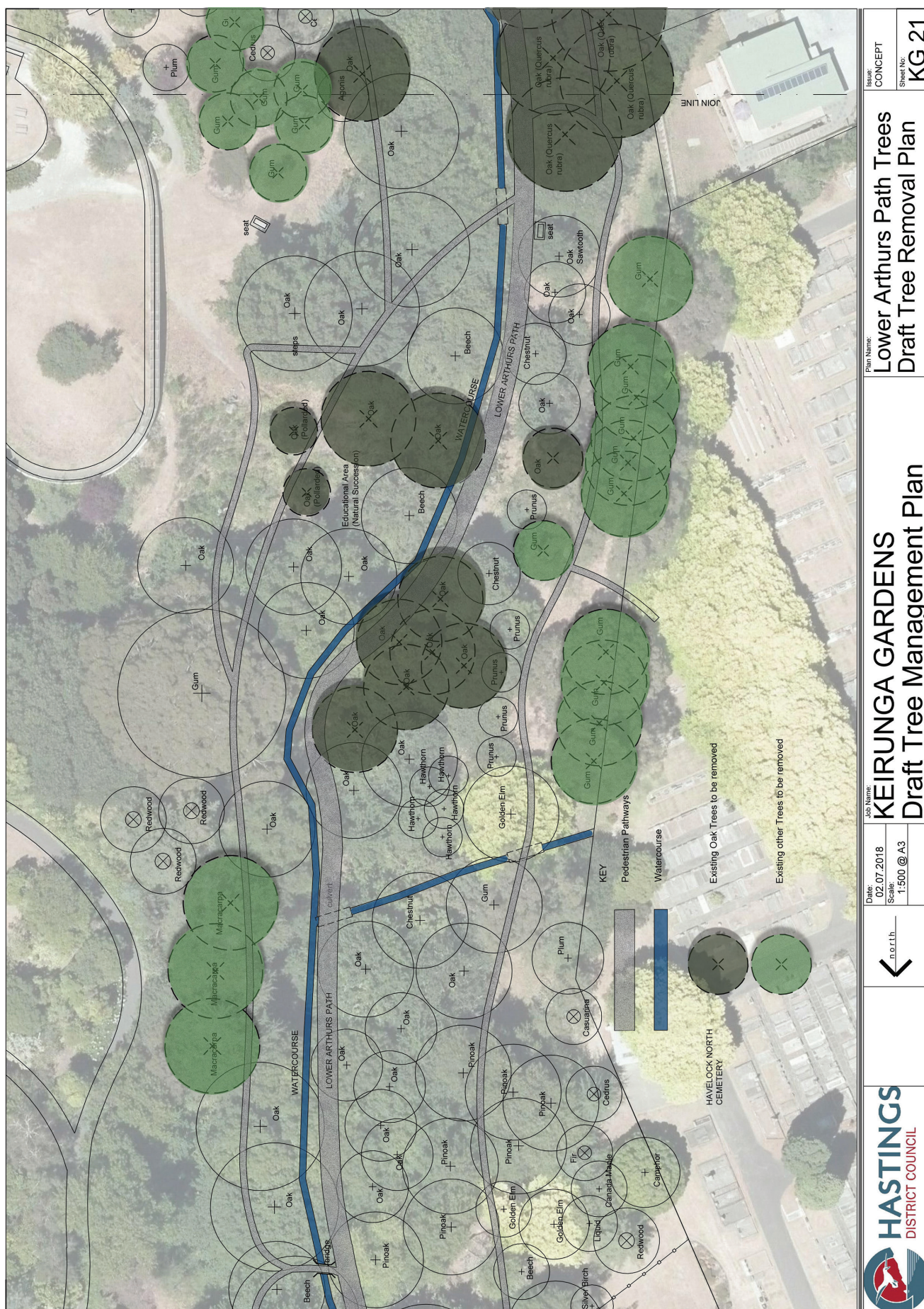
The extended submission period now closes at 5.00pm, Friday April 5th 2019.

Council will hear submissions to the draft tree management plan to ensure all submitters have the opportunity to have their say. All submitters will be advised of the date in due course. Those that have already submitted will be provided the opportunity to add to their submission given the recommendations of the peer review document and this addendum report.

Council will consider the draft tree management plan, the peer review and all of the submissions, before deciding on its course of action. Options, ranging from the status quo (minimal maintenance and keeping the park safe) to major landscape change will be considered. Ultimately, Council will decide, based on the full consultative approach. The outcome of the decision will then need to inform future budget requirements.

To view the draft tree management plan, the Arborlab peer review, this addendum report and to make an online submission, please visit the following website, www.myvoicemychoice.co.nz website.

Appendix 1

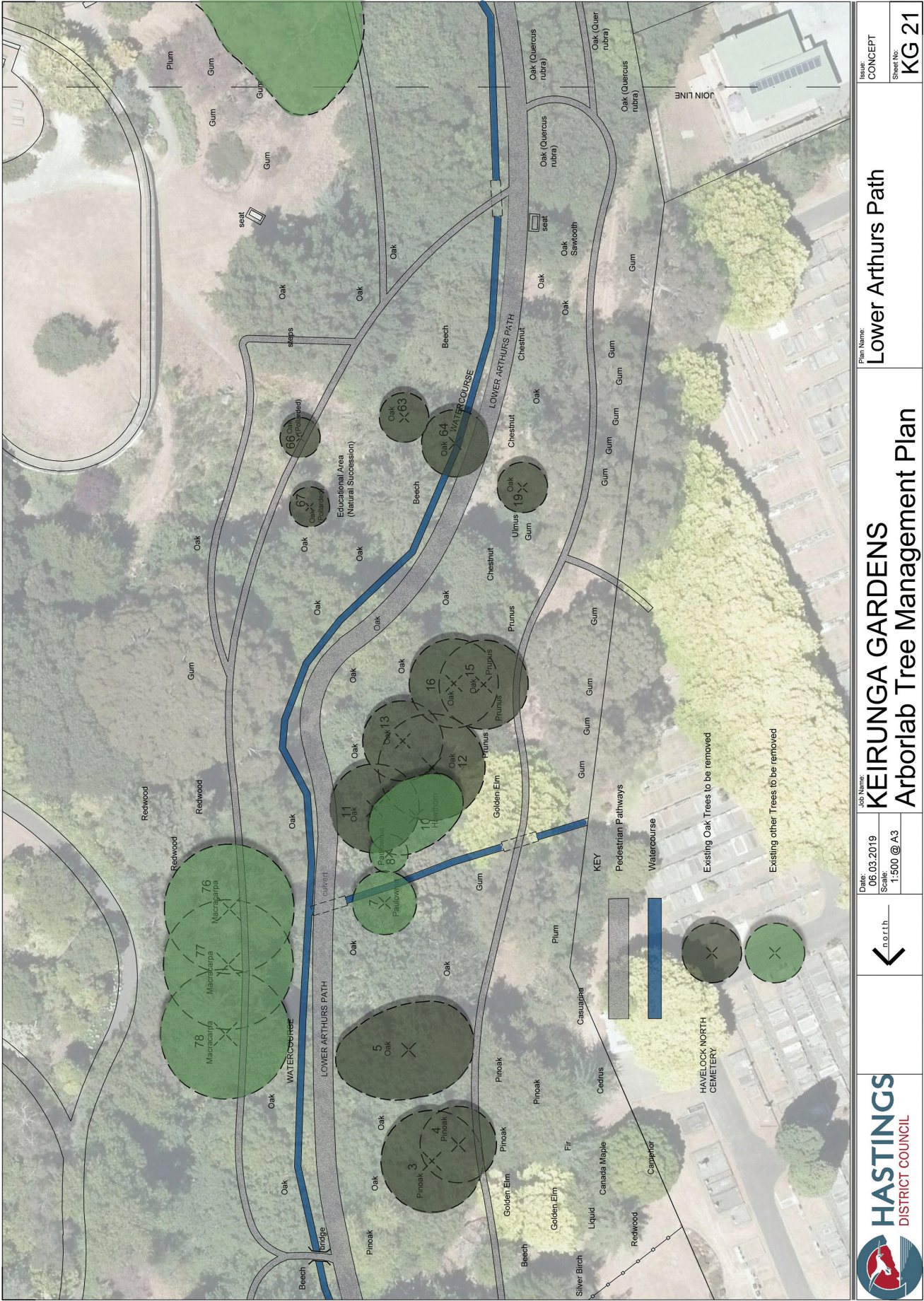


Appendix 1

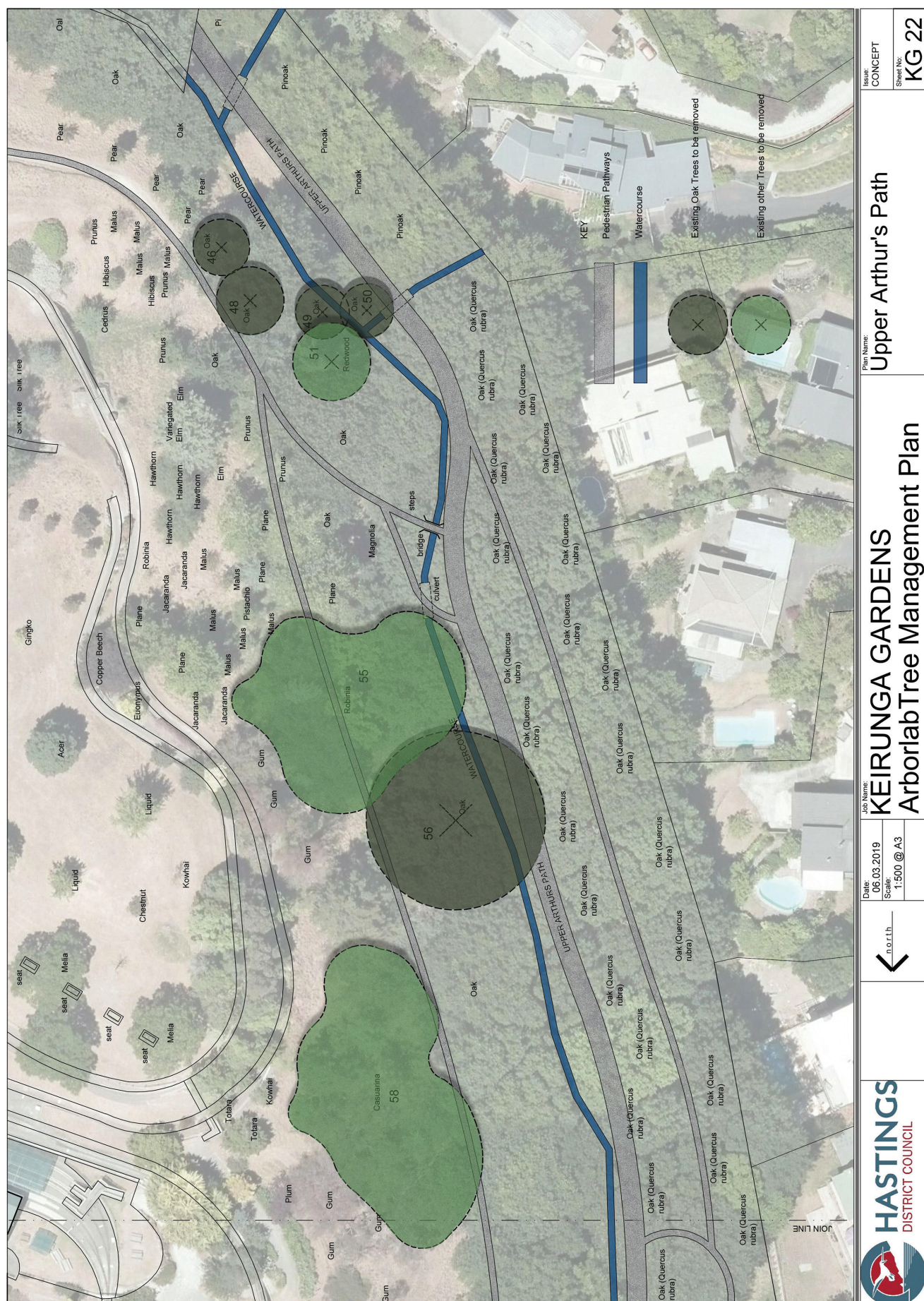


	KEIRUNGA GARDENS Draft Tree Management Plan	Date 02.07.2018 Scale 1:500 @ A3		Project Name Upper Arthur's Path Draft Tree Removal Plan	Project CONCEPT Sheet No. KG 22

Appendix 2



Appendix 2



NOTES

This image shows a single sheet of white paper with horizontal ruling lines. The lines are evenly spaced and run across the width of the page. There are no margins, text, or other markings on the paper.

NOTES

This image shows a single sheet of white paper with horizontal ruling lines. The lines are evenly spaced and run across the width of the page. There are no margins, text, or other markings on the paper.

NOTES

[illegible]



HASTINGS
DISTRICT COUNCIL

HASTINGS DISTRICT COUNCIL

207 Lyndon Road East

Hastings 4122

Private Bag 9002

Hastings 4156

www.hastingsdc.govt.nz

www.myvoicemychoice.co.nz

TE KAUNIHERA O HERETAUNGA

CFM-17-24-2-04