



# KEIRUNGA GARDENS

## DRAFT TREE MANAGEMENT PLAN

ARTHUR'S PATH GULLY - EXOTIC WOODLAND AREA

CONSULTATION DRAFT NOVEMBER 2018





## CONTENTS

### **PART 1** **4**

#### **INTRODUCTION & BACKGROUND**

BACKGROUND & PURPOSE 4

A BRIEF HISTORY 4

### **PART 2** **5**

#### **KEIRUNGA GARDENS MANAGEMENT PLAN**

PLAN 6

OBJECTIVES 7

ISSUES 7

GOALS 7

OBJECTIVES 7

POLICIES 7

IMPLEMENTATION 7

PRIORITY PLAN 7

MONITORING AND REVIEW 7

### **PART 3** **8**

#### **APPENDICES**

Appendix 1: Tree Palette 8

Appendix 1: Shrub Palette 9

# PART 1

# INTRODUCTION & BACKGROUND

## Background and Purpose

The purpose of this Tree Management Plan is to address the condition of aging trees in the Arthur's Path area of Keirunga Gardens and to plan for the future replacement of these trees as they reach the end of their life. This plan provides detail and guidance on the recommended removal, replacement and future management of the trees in the exotic woodland area commonly known as the Arthur's Path Gully. Many of these trees were planted by Mr George Nelson in the 1930's and are now coming to the end of their usable life.

## A Brief History

In 1961 Mr George Nelson decided to gift 7.94 hectares of Keirunga Gardens to the mayor, councillors and citizens of the Borough of Havelock North, to include the house and its garden after his death. George Nelson died at the age of 93 in 1964, and in 1966 an enthusiastic group, led by Frank Bacon, suggested to the Borough Council that Keirunga Gardens be developed as a cultural centre. The formation of the 'Keirunga Gardens Society' followed.

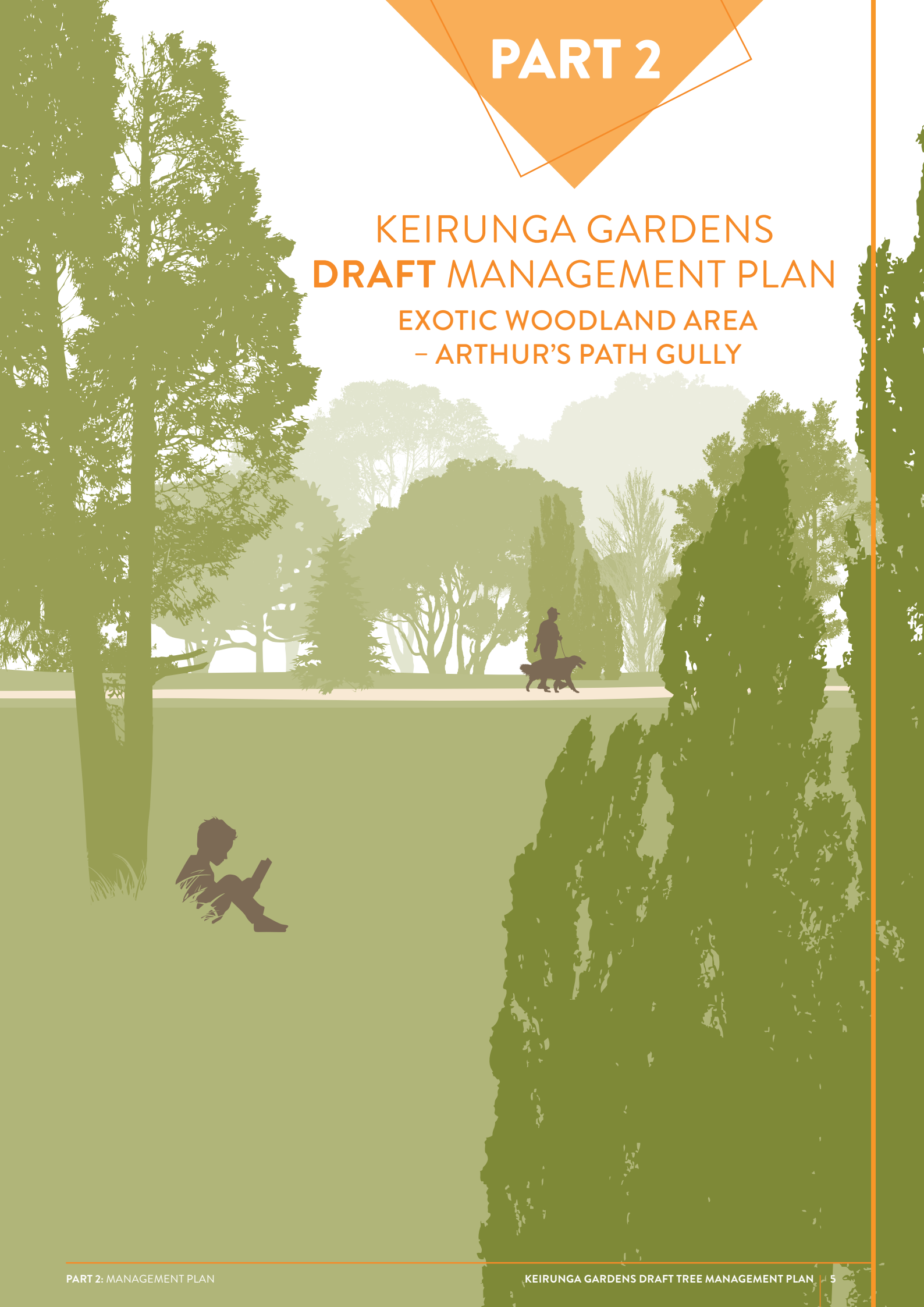
Groups active at Keirunga over the next few years included a painting group, cane craft, a drama section, film society, garden circle, rock and mineral club and a floral art group. They were joined in 1968 by the Keirunga Potters. A new Nelson Room workshop was opened at the site in 1976, a ceremony attended by several thousand. Elizabeth Nelson, then aged 99 was the guest of honour, and remained patron of the Keirunga Gardens Society until her death in 1982 at the age of 106. In 1985 the new wing was added, which includes an art and pottery studio.



Keirunga Gardens - Exotic woodland area – Arthur's Path Gully Keirunga Gardens

# PART 2

## KEIRUNGA GARDENS **DRAFT** MANAGEMENT PLAN EXOTIC WOODLAND AREA – ARTHUR'S PATH GULLY



# Keirunga Gardens Reserve Management Plan

The Keirunga Gardens Reserve Management Plan adopted in 2009 identified six specific management areas including reference to the Exotic Woodland Area. This Tree Management Plan seeks to address issues in this specific Area “4” due to the recent history of tree failure. Hastings District Council will develop tree management plans for other areas as required in the future, however the initial focus of the Tree Management Plan is the Exotic Woodland Area.

The relevant objectives included in the 2009 Reserve Management Plan includes;

- To plant and establish appropriate tree and garden species on Keirunga Gardens for the benefit of reserve users.
- To implement a long term planting plan in conjunction with the Keirunga Gardens Heritage Action Society.
- To protect and manage trees and vegetation located within Keirunga Gardens in accordance with the Hastings Tree and Vegetation Guidelines.



Keirunga Gardens covers a total of 7.94 hectares of which 3.5 hectares is natural area.

## ISSUES

Issues identified with the Keirunga Gardens trees, particularly in the Arthur's Path area include:

- The age of the trees ranges from 10 years to 80 years and greater. Most of the mature trees in the Arthur's Path area have been left to develop naturally with little proactive tree maintenance.
- Many of these trees have aged poorly, with a significant number suffering from poor form, dead wood, and limb and root failure. Most of these failing trees are adjacent to the main track in the gully due to this area's unsuitably wet conditions.
- Significant soil erosion has occurred following the loss of trees in the area, resulting in the canopy becoming more open, allowing high winds through and the high likelihood of increased tree loss along the Arthur's Path track in severe weather events.
- There have been a number of requests to remove trees that shade and impact on the adjoining properties along the Kopanga Road boundary.

## GOALS

The goals of this tree management plan are to:

1. Create a framework that promotes the proactive management of the Keirunga Gardens trees in the Arthur's Path area for the community's future enjoyment.
2. Progressively remove the at-risk and aging mature trees and replace them with a new tree-scape in a way that promotes public safety and education, environment health and enhances visual amenity of the reserve.

## OBJECTIVES

### KGTMP0 1.

To identify and remove trees that pose a risk to safety, and those that will negatively affect the growth of succession plantings.

### KGTMP0 2.

To identify and retain the trees that are in good condition and do not pose a risk to the public or property.

### KGTMP0 3.

To identify and implement a tree –scape and landscape plan that will contribute positively to the aesthetic value of Keirunga Gardens with trees that will thrive in the environment.

### KGTMP0 4.

To garner community support for the Keirunga Gardens Tree Management Plan.

### KGTMP0 5.

To proactively manage and maintain the healthy trees in Keirunga Gardens.

### KGTMP0 6.

Improve the overall quality & longevity of trees in Keirunga Gardens by removing undesirable or compromised trees in favour of more desirable new tree specimens.

## POLICIES

### KGTMP1.

To include funds in the Council's Long Term Plan that will allow for the removal of poor quality and problem trees and the planting and management of the succession tree plantings.

### KGTMP2.

To take a planned approach to the removal and replacement of trees, in accordance with the priorities identified by qualified arborists, landscape architects and tree specialists.

### KGTMP3.

Work alongside the Keirunga Gardens Heritage Action Society and local community, in support for the Keirunga Gardens Tree Management Plan including educational opportunities.

### KGTMP4.

Keirunga Gardens' tree plantings will be monitored and maintained, to the best horticultural practice.

### KGTMP5.

To review and update this management plan annually.

## IMPLEMENTATION

It is expected that the Keirunga Gardens Tree Management Plan for the Exotic Woodland Area, be implemented in accordance with the following action plan including proposed new tracks as required to assist with tree replacement:

1. Prepare draft plan
2. Engage and consult with public and key stakeholders
3. Confirm the tree removal and replacement plans
4. Include funding in the Annual Plan and Long Term Plan
5. Implement the tree removal programme
6. Implement ground preparation
7. Implement the staged tree replanting programme
8. Monitor new tree plantings and carry out regular formative tree maintenance when trees are young
9. Inspect and maintain mature trees biennially
10. Review Keirunga Gardens Tree Management Plan in 2029.

## PRIORITY PLAN

To ensure the long term success of the Keirunga Gardens Tree Management Plan the priorities are:

1. Identification and removal of problem trees (See Appendix 1-2)
- 1.2 Implement irrigation systems to ensure the successful establishment and development of new trees
2. Implement irrigation systems to ensure the successful establishment and development of new trees.
3. Planting of suitable replacement trees which will enhance amenity of Keirunga Gardens (see vegetation palette and Appendix 3-4)
4. The proactive maintenance of Keirunga Gardens trees

## DRAFT FUNDING AND BUDGETS

YEAR	REMOVAL	IRRIGATION	PLANTING
2019/20	\$25,000		
2020/21	\$50,000	\$15,000	\$20,000
2021/22	\$25,000	\$15,000	\$20,000
2022/23			\$20,000

## MONITORING AND REVIEW

To ensure that the Keirunga Gardens Tree Management Plan for the Exotic Woodland Area is operating effectively it is essential that progress is monitored and actions reviewed annually. This will be undertaken by appropriate council officers and/or contractors. If anything is found to be affecting this plan's ability to operate effectively, appropriate action should be taken to make changes when required.

1. To update RAMM database for all tree removals and new tree plantings
2. To ensure that the new tree plantings are succeeding they will be inspected once a year and any necessary actions arising from these inspections shall be actioned.
3. Keirunga Gardens Tree Management Plan work progress to be reviewed annually.



## APPENDIX 1: VEGETATION PALETTE

### Primary Tree Palette

EVERGREEN NATIVE TREES	
Common Name	Botanical Name
Kowhai	<i>Sophora tetraptera</i>
Totara	<i>Podocarpus totara</i>
Rata	<i>Metrosideros robusta</i>
Comprosmia	<i>robusta</i>
Tarata/Lemonwood	<i>Pittosporum eugenioides</i>
Titoki	<i>Alectryon excelsus</i>
EVERGREEN EXOTIC TREES	
Common Name	Botanical Name
Wattles	<i>Acacia Spp</i>
Willow Myrtle	<i>Agonis flexuosa</i>
Coast Banksia	<i>Banksia integrifolia</i>
Red Flowering Gum	<i>Eucalyptus ficifolia</i>
Loquat	<i>Eriobotrya Japonica</i>
Fig Tree	<i>Ficus Carica</i>
Feijoa Tree	<i>Acca Sellowiana</i>
Silky Oak	<i>Grevillea Robusta</i>
Holly Tree	<i>Ilex Spp</i>
Juniper	<i>Juniperus Spp</i>
Lagunaria	<i>Lagunaria Spp</i>
Bay Laurel	<i>Laurus Nobilis</i>
Catalina Ironwood	<i>Lyonothamnus Spp</i>
Southern Magnolia	<i>Magnolia Grandiflora</i>
Melaleuca	<i>Melaleuca Spp</i>
Olive Tree	<i>Olea Spp</i>
Cork oak	<i>Quercus Suber</i>
Syzygium	<i>Syzygium Spp</i>
Viburnum	<i>Viburnum Spp</i>



DECIDUOUS EXOTIC TREES	
Common Name	Botanical Name
Acer	<i>Acer Spp</i>
Red-Horse Chestnut	<i>Aesculus x carnea</i>
Shellbark hickory	<i>Carya Laciniosa</i>
Japanese Chestnut	<i>Castanea Crenata</i>
Northern Catalpa	<i>Catalpa Speciosa</i>
Judas Tree	<i>Cercis siliquastrum</i>
Hawthorns	<i>Crataegus Spp</i>
Griffith's ash	<i>Fraxinus Griffithii</i>
Manna Ash	<i>Fraxinus Ornus</i>
Gleditsia	<i>Gleditsia Spp</i>
Idesia	<i>Idesia Spp</i>
Chinese Flame Tree	<i>Koelreuteria Bipinnata</i>
Crab Apple	<i>Malus Spp</i>
White Mulberry	<i>Morus Alba</i>
Paulownia	<i>Paulownia Spp</i>
Amur Cork Tree	<i>Phellodendron amurense</i>
Photinia Beauverdiana	<i>Photinia Beauverdiana</i>
Chinese Pistache	<i>Pistacia Chinensis</i>
Bradford Pear	<i>Pyrus Calleryana</i>
Prunus	<i>Prunus Spp</i>
Scarlet Oak	<i>Quercus Coccinea</i>
Chinese Sumac	<i>Rhus Chinensis</i>
Snowbell	<i>Styrax Spp</i>
Small-leaved lime	<i>Tilia Cordata</i>
Ulmus Frontier	<i>Ulmus Frontier</i>



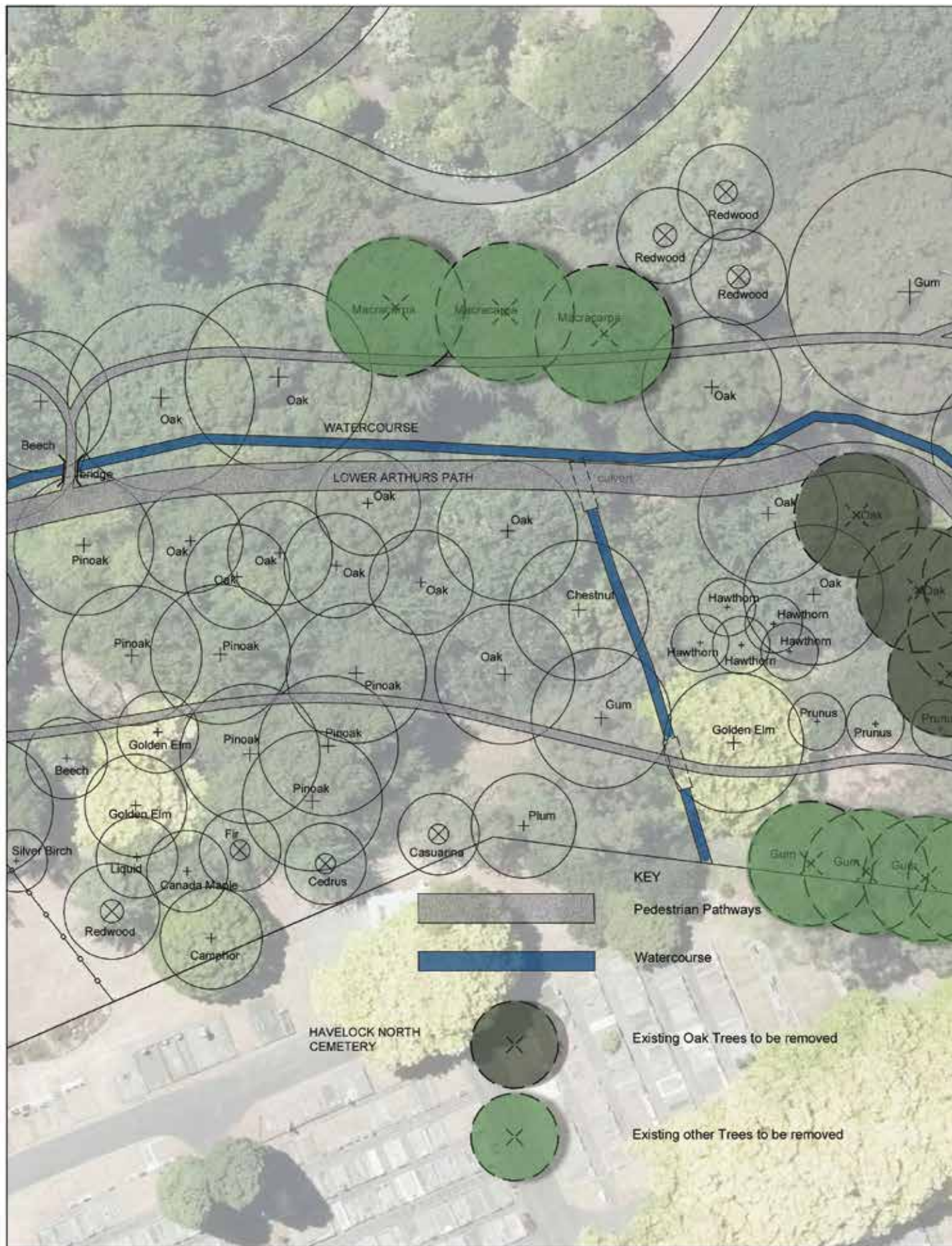


# Primary Shrub Palette

NATIVE EVERGREEN SHRUBS	
Common Name	Botanical Name
Corokia Spp	<i>Corokia Spp</i>
Pseudopanax	<i>Pseudopanax Spp</i>
Hebe	<i>Hebe Spp</i>
Daisy Plant	<i>Olearia Spp</i>
EVERGREEN SHRUBS	
Common Name	Botanical Name
Bottle Brush	<i>Callistemon Spp</i>
Camellia Reticulata	<i>Camellia reticulata</i>
Escallonia	<i>Escallonia Spp</i>
Mahonia	<i>Mahonia Spp</i>
Melaleuca	<i>Melaleuca Spp</i>
Syzygium	<i>Syzygium Spp</i>

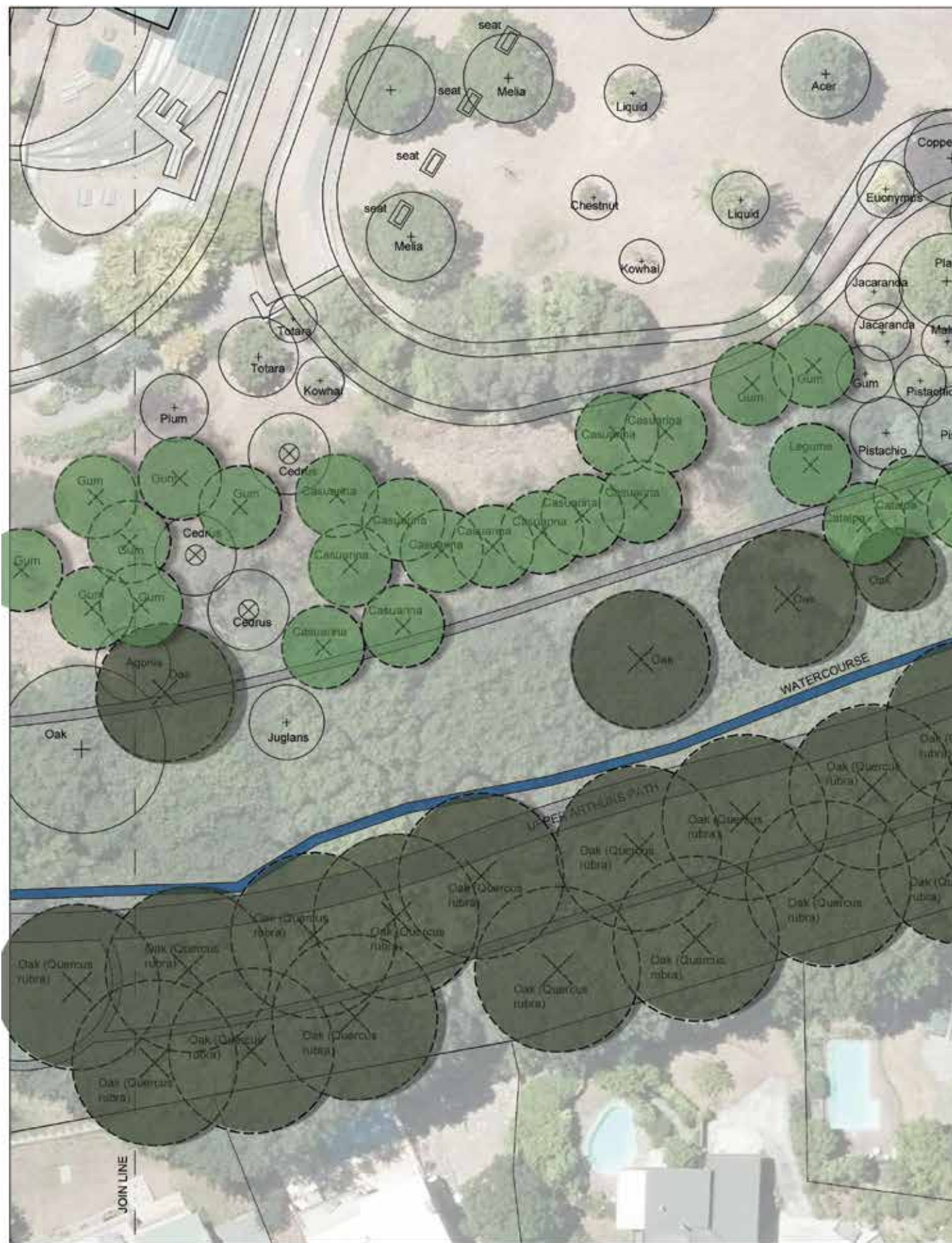
DECIDUOUS EXOTIC SHRUBS	
Common Name	Botanical Name
Chaenomeles	<i>Chaenomeles Spp</i>
Smoke Bush	<i>Cotinus Spp</i>
Chinese Quince	<i>Pseudocydonia Sinesis</i>
Deutzia	<i>Deutzia Spp</i>
Panicled Hydrangea	<i>Hydrangea Paniculata</i>
Mock-Orange	<i>Philadelphus Spp</i>
Rose	<i>Rosa Spp</i>
Spiraea Spp	<i>Spiraea Spp</i>
Guelder-Rose	<i>Viburnum Opulus</i>







<b>GARDENS</b> <b>anagement Plan</b>	Plan Name: <b>Lower Arthurs Path Trees</b> <b>Draft Tree Removal Plan</b>	Issue: <b>CONCEPT</b>
		Sheet No: <b>KG 21</b>

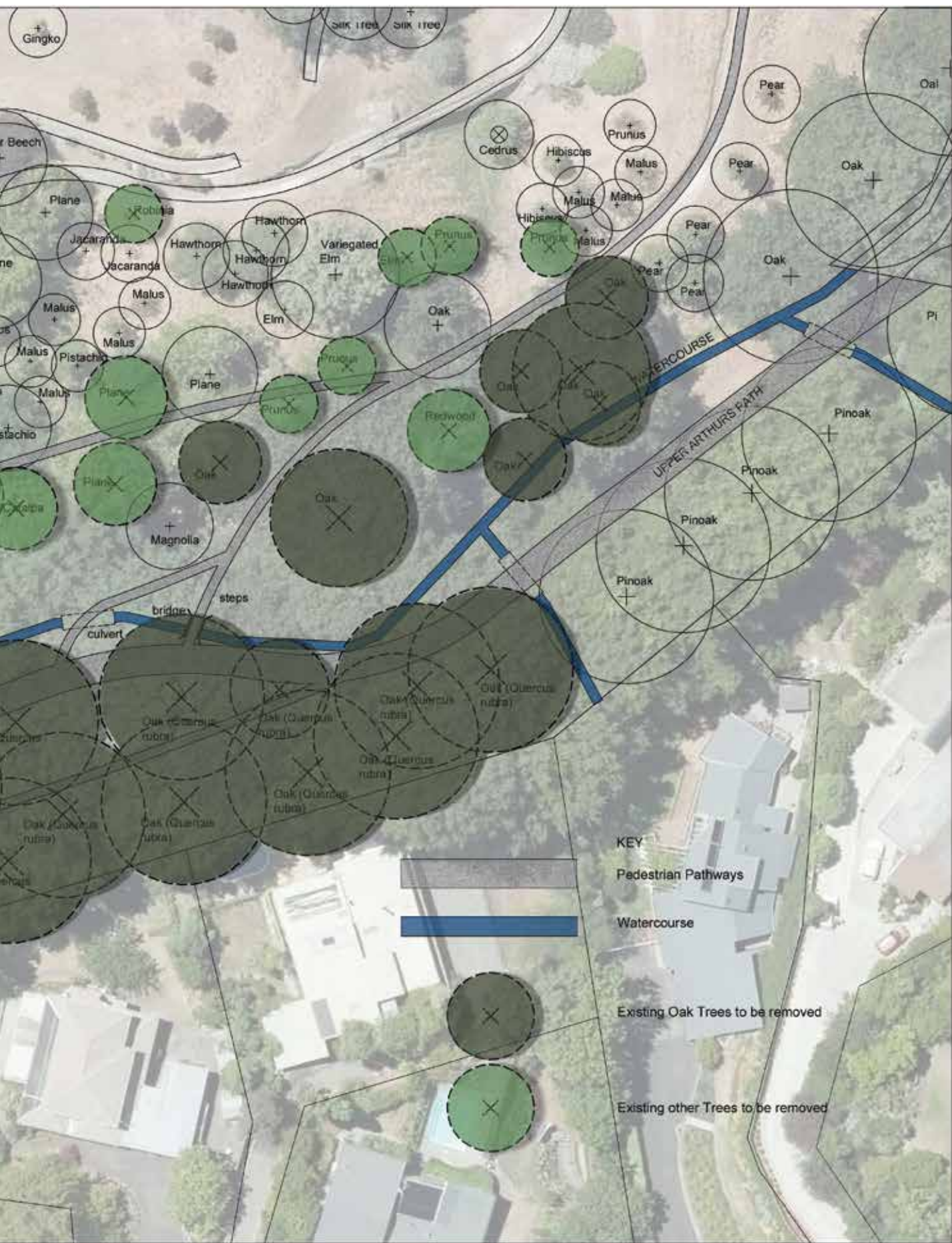


**HASTINGS**  
DISTRICT COUNCIL



Date:  
02.07.2018  
Scale:  
1:500 @ A3

Job Name:  
**KEIRUNGA**  
Draft Tree M



<b>KEIRUNGA GARDENS</b> <b>Management Plan</b>	Plan Name: <b>Upper Arthur's Path</b> <b>Draft Tree Removal Plan</b>	Issue: <b>CONCEPT</b>
		Sheet No: <b>KG 22</b>

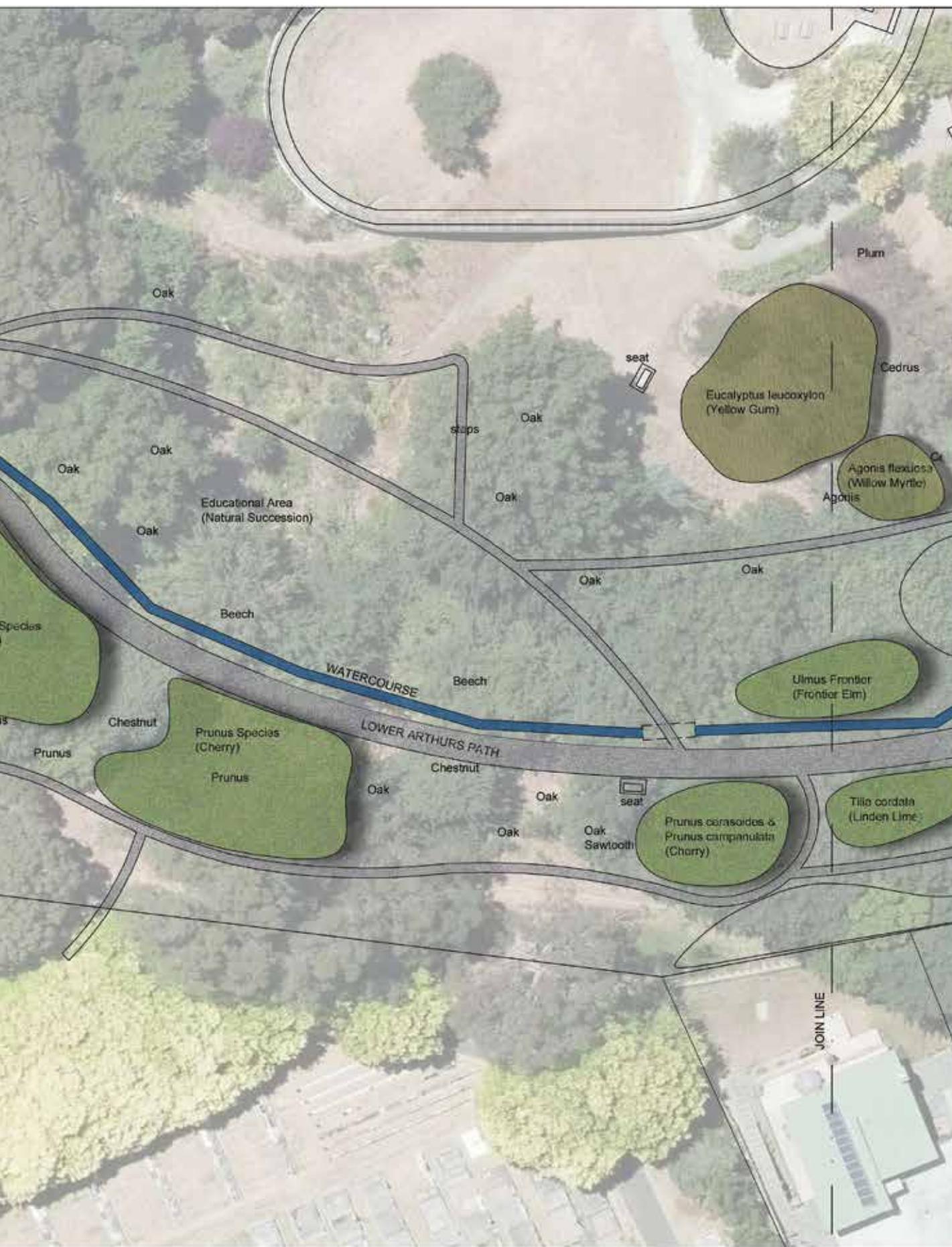


**HASTINGS**  
DISTRICT COUNCIL



Date:  
02.07.2018  
Scale:  
1:500 @ A3

Job Name:  
**KEIRUNGA GARDENS**  
Draft Tree Management Plan



# GARDENS anagement Plan

Plan Name:  
**Lower Arthurs Path  
Proposed Tree Groups**

Issue:  
**CONCEPT**

Sheet No:  
**KG 31**





# GARDENS anagement Plan

Plan Name:  
Upper Arthur's Path  
Proposed Tree Groups

Issue:  
CONCEPT

Sheet No:  
**KG 32**

## NOTES

This image shows a single sheet of white paper with horizontal ruling lines. The lines are evenly spaced and run across the width of the page. There are no margins, text, or other markings on the paper.

## NOTES

[illegible]



**HASTINGS DISTRICT COUNCIL**

207 Lyndon Road East

Hastings 4122

Private Bag 9002

Hastings 4156

[www.hastingsdc.govt.nz](http://www.hastingsdc.govt.nz)

[www.myvoicemychoice.co.nz](http://www.myvoicemychoice.co.nz)

**TE KAUNIHERA O HERETAUNGA**

3230718