

HASTINGS DISTRICT COUNCIL

BYLAWS

PART 10

SPEED LIMITS BYLAW 2012

EXPLANATORY NOTE

This Bylaw allows the Council to set speed limits by resolution, on all roads under its control and in certain designated locations specified in the Bylaw.

This Bylaw is made pursuant to the Local Government Act 2002, the Land Transport Act 1998, and the Land Transport Rule: Setting of Speed Limits 2003 or subsequent Land Transport Rule: Setting of Speed Limits 2017, and allows the Council to set speed limits in relation to roads and areas under its control in the district.

Hastings District Council Speed Limits Bylaw 2012

1.0 Introduction

- 1.1 Pursuant to the Local Government Act 2002, the Land Transport Act 1998 and the Land Transport Rule: Setting of Speed Limits 2003 or subsequent Land Transport Rule: Setting of Speed Limits 2017, the Hastings District Council makes this bylaw to set speed limits as specified in the schedules.

2.0 Short Title and Commencement

- 2.1 The title of this bylaw is the Hastings District Council Speed Limits Bylaw 2012, being part 10 of the Hastings District Council Bylaws.
- 2.2 The speed limits described in the schedules come into force on the date specified in the schedules.

3.0 Scope

- 3.1 So far as they are applicable, and are not contrary to the provisions of this bylaw, the provisions of the Introductory Bylaw 2010 are incorporated into and form part of this bylaw.

4.0 Repeal of Bylaws

- 4.1 As from the day this Bylaw comes into force, any previous Bylaw or parts of any Bylaw and their amendments in force relating to the setting of speed limits on roads under the control of Hastings District Council shall be revoked

5.0 Interpretation

- 5.1 Seasonal Speed Limit, Road, Speed Limit, Temporary Speed Limit, Rural Area, Urban Traffic Area and Urban Speed Limit all have the meanings given to them in the Land Transport Rule: Setting of Speed Limits 2017.
- 5.2 Speed Limit for a Road in a Designated Location means a speed limit for vehicle traffic imposed by the Council pursuant to the Land Transport Rule: Setting of Speed Limits 2017.

6.0 Speed limits

- 6.1 The roads or areas described in the schedules specified in Section 8 or as shown on a map referenced in the schedules, (and attached to this Bylaw) are declared to have the speed limits specified in those schedules and maps, which are part of this bylaw.

7.0 Offences

- 7.1 Every person commits an offence against this Bylaw who operates a vehicle in excess of the bylaw speed limits set by this bylaw.

8.0 Schedules

Schedule 1:	Roads that have a speed limit of 10 km/h
Schedule 2:	Roads that have a speed limit of 20 km/h.
Schedule 3:	Roads that have a speed limit of 30 km/h.
Schedule 4:	Roads that have a speed limit of 40 km/h
Schedule 5:	Urban traffic areas - roads that have a speed limit of 50 km/h.
Schedule 6:	Roads that have a speed limit of 60 km/h.
Schedule 7:	Roads that have a speed limit of 70 km/h.
Schedule 8:	Roads that have a speed limit of 80 km/h.
Schedule 9:	Roads that have a speed limit of 90 km/h.
Schedule 10:	Rural areas - roads that have a speed limit of 100 km/h.
Schedule 11:	Roads that have a seasonal speed limit.
Schedule 12:	Roads that have a variable speed limit.
Schedule 13:	Roads that have a minimum speed limit

This bylaw was made by the Hastings District Council at a meeting of the Council on 28 June 2012 and must be reviewed within 5 years from commencement and again within 10 ten years thereafter.

The common seal of the Hastings District Council was attached in the presence of:



Mayor



Chief Executive



Schedule 1 - Roads that have a speed limit of 10 km/h

The roads or areas described in this schedule or as shown on a map referenced in this schedule are declared to have a speed limit of 10km/h

Reference Number	Speed Limit	Description	Date Speed Limit Comes into Force	Legal Instrument	

Schedule 2 - Roads that have a speed limit of 20 km/h

The roads or areas described in this schedule or as shown on a map referenced in this schedule are declared to have a speed limit of 20km/h

Reference Number	Speed Limit	Description	Date Speed Limit Comes into Force	Legal Instrument	
S2/01	20 km/h	Any areas designated reserves or cemeteries and all beaches within the Hastings District will have a speed limit of 20 km/h.	1 March 2021	Hastings District Council Speed Limits Bylaw 2012	
S2/02	20 km/h	At Waipatiki and Havelock North: The area marked on the map titled Hastings District Council Speed Limits Bylaw 2012 number HDC04001/13 and HDC04001/14 and identified in the legend as having a speed limit of 20 km/h.	1 March 2021	Hastings District Council Speed Limits Bylaw 2012	

Schedule 3 - Roads that have a speed limit of 30 km/h

The roads or areas described in this schedule or as shown on a map referenced in this schedule are declared to have a speed limit of 30km/h

Reference Number	Speed Limit	Description	Date Speed Limit Comes into Force	Legal Instrument	
S03/01	30km/h	At Havelock North CBD: All the roads within the area marked on the map titled Hastings District Council Speed Limits Bylaw 2012 number HDC04001/14 and identified in the legend as having a speed limit of 30 km/h.	1 March 2021	Hastings District Council Speed Limits Bylaw 2012	

Schedule 4 - Roads that have a speed limit of 40 km/h

The roads or areas described in this schedule or as shown on a map referenced in this schedule are declared to have a speed limit of 40km/h

Reference Number	Speed Limit	Description	Date Speed Limit Comes into Force	Legal Instrument	
S4/01	40 km/h	At Havelock North: All the roads within the area marked on the map titled Hastings District Council Speed Limits Bylaw 2012 number HDC04001/14 and identified in the legend as having a speed limit of 40 km/h.	1 March 2021	Hastings District Council Speed Limits Bylaw 2012	

Schedule 5 - Urban traffic areas – 50 km/h

The roads or areas described in this schedule or as shown on a map referenced in this schedule are declared to be urban traffic areas that have a speed limit of 50 km/h, except for those roads or areas that are:

- (a) described as having a different speed limit in the appropriate schedule of this bylaw; or
- (b) shown on a map as having a different speed limit, as referenced in the appropriate schedule of this bylaw.

Reference Number	Speed Limit	Description	Date Speed Limit Comes into Force	Legal Instrument	
S5/01	50 km/h	At Hastings, Twyford and Flaxmere: All the roads within the area marked on the map entitled "Hastings District Council Speed Limits Bylaw 2012", number HDC04001/11 and identified in the legend as an urban traffic area having a speed limit of 50 km/h, except for those roads or areas that are marked on the said map and identified in the legend as having a different speed limit, as referenced in the appropriate schedule of this bylaw	1 March 2021	Hastings District Council Speed Limits Bylaw 2012	

Reference Number	Speed Limit	Description	Date Speed Limit Comes into Force	Legal Instrument	
S5/02	50 km/h	At Puketapu, Omaha and Fernhill, Whakatu, Waimarama, Bridge Pa, Paki Paki, Putorino and Pakowhai and: All the roads within the area marked on the map entitled "Hastings District Council Speed Limits Bylaw 2012", number HDC04001/12 and identified in the legend as an urban traffic area having a speed limit of 50 km/h, except for those roads or areas that are marked on the said map and identified in the legend as having a different speed limit, as referenced in the appropriate schedule of this bylaw.	1 March 2021	Hastings District Council Speed Limits Bylaw 2012	
S5/03	50 km/h	At Haumoana, Te Awanga, Waipatiki, Maraekakaho and Waiohiki: All the roads within the area marked on the map entitled "Hastings District Council Speed Limits Bylaw 2012", number HDC04001/13 and identified in the legend as an urban traffic area having a speed limit of 50 km/h, except for those roads or areas that are marked on the said map and identified in the legend as having a different speed limit, as referenced in the appropriate schedule of this bylaw.	1 March 2021	Hastings District Council Speed Limits Bylaw 2012	

Reference Number	Speed Limit	Description	Date Speed Limit Comes into Force	Legal Instrument	
S5/04	50 km/h	At Havelock North and Clive: All the roads within the area marked on the map entitled "Hastings District Council Speed Limits Bylaw 2012", number HDC04001/14 and identified in the legend as an urban traffic area having a speed limit of 50 km/h, except for those roads or areas that are marked on the said map and identified in the legend as having a different speed limit, as referenced in the appropriate schedule of this bylaw.	1 March 2021	Hastings District Council Speed Limits Bylaw 2012	

Schedule 6 - Roads that have a speed limit of 60 km/h

The roads or areas described in this schedule or as shown on a map referenced in this schedule are declared to have a speed limit of 60 km/h.

Reference Number	Speed Limit	Description	Date Speed Limit Comes into Force	Legal Instrument	
S6/01	60 km/h	At Twyford and Havelock North: All the roads within the area marked on the map entitled "Hastings District Council Speed Limits Bylaw 2012", number HDC04001/11 and HDC04001/14 and identified in the legend as having a speed limit of 60 km/h, as referenced in the appropriate schedule of this bylaw.	1 March 2021	Hastings District Council Speed Limits Bylaw 2012	

Schedule 7 - Roads that have a speed limit of 70 km/h

The roads or areas described in this schedule or shown on a map referenced in this schedule are declared to have a speed limit of 70 km/h.

Reference Number	Speed Limit	Description	Date Speed Limit Comes into Force	Legal Instrument	
S7/01	70 km/h	At Hastings and Flaxmere, Havelock North, Pakowhai, Clive, Bridge Pa, Putorino, and Waiohiki: All roads marked on the map entitled "Hastings District Council Speed Limits Bylaw 2012" as shown on maps HDC04001/11, HDC04001/12, HDC04001/13 and HDC04001/14 and identified in the legend as having a speed limit of 70 km/h, as referenced in the appropriate schedule of this bylaw.	1 March 2021	Hastings District Council Speed Limits Bylaw 2012	

Schedule 8 - Roads that have a speed limit of 80 km/h

The roads or areas described in this schedule or shown on a map referenced in this schedule are declared to have a speed limit of 80 km/h.

Reference Number	Speed Limit	Description	Date Speed Limit Comes into Force	Legal Instrument	
S8/01	80 km/h	At Hastings and Flaxmere, Havelock North Haumoana, Te Awanga and Tuki Tuki. All roads marked on the map entitled "Hastings District Council Speed Limits Bylaw 2012" as shown on map HDC04001/11, HDC04001/12, HDC04001/13 and HDC04001/14 and identified as having a speed limit of 80 km/h. as referenced in the appropriate schedule of this bylaw.	1 March 2021	Hastings District Council Speed Limits Bylaw 2012	

Schedule 9 - Roads that have a speed limit of 90km/h

The roads or areas described in this schedule or shown on a map referenced in this schedule are declared to have a speed limit of 90 km/h.

Reference Number	Speed Limit	Description	Date Speed Limit Comes into Force	Legal Instrument	

Schedule 10 - Roads that have a speed limit of 100km/h

The roads or areas described in this schedule or as shown on a map referenced in this schedule are declared to be rural areas that have a speed limit of 100 km/h.

Reference Number	Speed Limit	Description	Date Speed Limit Comes into Force	Legal Instrument	
S10/01	100 km/h	All Hastings District Council roads marked on the maps entitled Hastings District Council Speed Limits Bylaw 2012 numbered HDC4001/11, HDC4001/12, HDC4001/13 and HDC04001/14 which are not identified within the legend, have a speed limit of 100 km/h. Every Rural area that does not fall within the roads or areas shown in the Schedules also have a speed limit of 100km/h.	1 March 2021	Hastings District Council Speed Limits Bylaw 2012	

Schedule 11 – Roads that have a Seasonal Speed Limit

The roads or areas described in this schedule or as shown on a map referenced in this schedule are declared to have a seasonal speed limit.

Reference Number	Speed Limit	Description	Date Speed Limit Comes into Force	Legal Instrument	
S14/01	50km/h	At Puketapu All roads marked on the map entitled "Hastings District Council Speed Limits Bylaw 2012" as shown on map HDC04001/12 and identified as having a seasonal speed limit of 50 km/h, between the dates of 1 December and 9 February each year (inclusive) as referenced in the appropriate schedule of this bylaw.	1 March 2021	Hastings District Council Speed Limits Bylaw 2012	

Schedule 12 – Roads that have a Variable Speed Limit

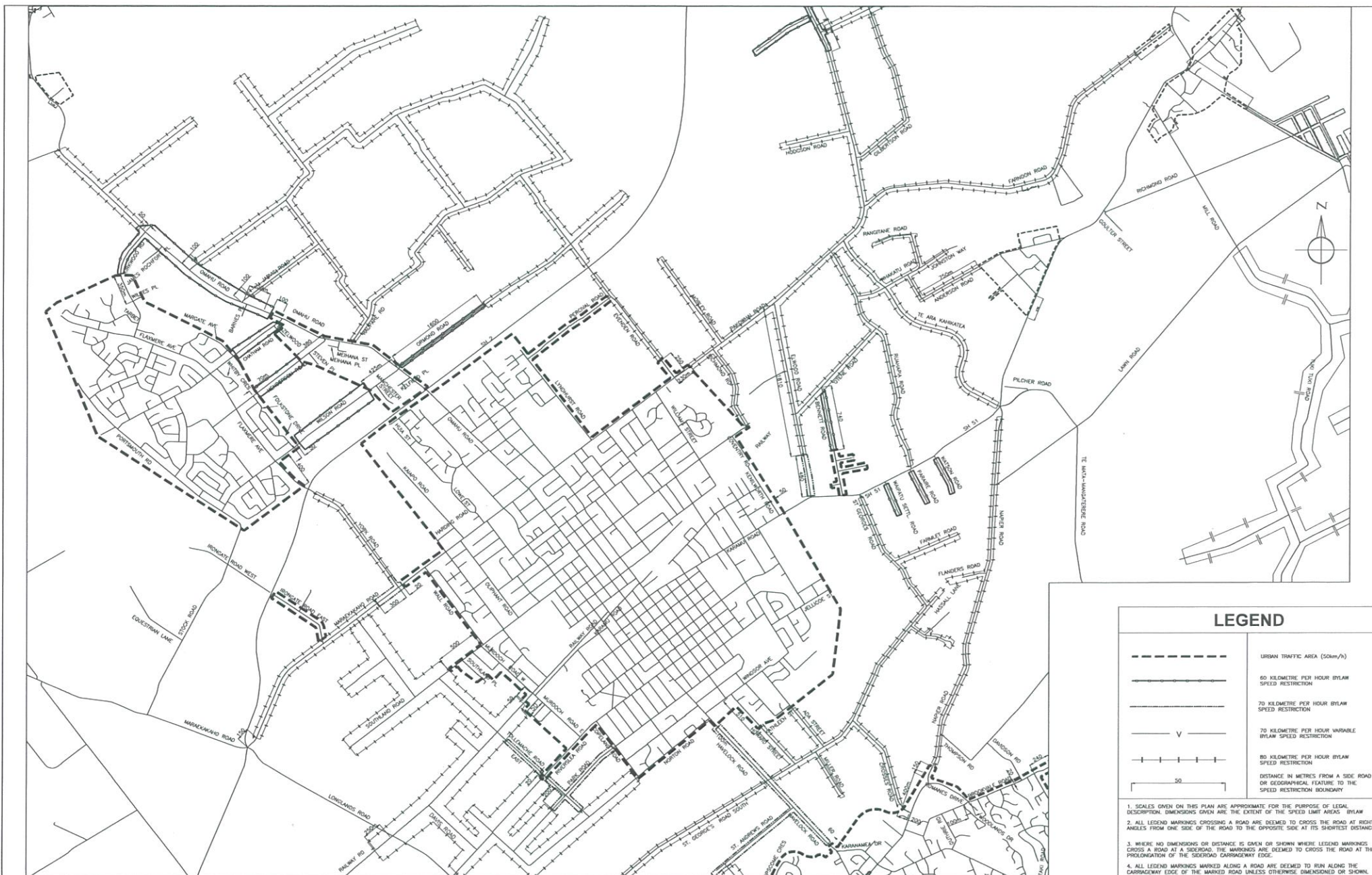
The roads or areas described in this schedule or as shown on a map referenced in this schedule are declared to be roads that have a variable speed limit.

Reference Number	Speed Limit	Description	Date Speed Limit Comes into Force	Legal Instrument	
S12/01	70/100km/h Variable Speed Limit	At the intersection of and Mill Road and Richmond Road on the map entitled "Hastings District Council Speed Limits Bylaw 2012", number HDC04001/14 as having a variable speed limit of 70/100 km/h, as referenced in the appropriate schedule of this bylaw.	1 March 2021	Hastings District Council Speed Limits Bylaw 2012	
S12/02	60/80km/h Variable Speed Limit	At the intersection of Longlands Road West, and Railway Road South, on the map entitled "Hastings District Council Speed Limits Bylaw 2012", number HDC04001/11 and the intersection of Pakowhai Road and Elwood Road on the map entitled "Hastings District Council Speed Limits Bylaw 2012", number HDC04001/11 as having a variable speed limit of 60/80 km/h, as referenced in the appropriate schedule of this bylaw.	1 March 2021	Hastings District Council Speed Limits Bylaw 2012	

Schedule 13 - Roads that have a Minimum Speed Limit

The roads or areas described in this schedule or as shown on a map referenced in this schedule are declared to be roads that have a minimum speed limit.

Reference Number	Speed Limit	Description	Date Speed Limit Comes into Force	Legal Instrument	



HASTINGS, TWYFORD AND FLAXMERE
SCALE 1:20,000

LEGEND

--- URBAN TRAFFIC AREA (50km/h)

--- 60 KILOMETRE PER HOUR BYLAW SPEED RESTRICTION

--- 70 KILOMETRE PER HOUR BYLAW SPEED RESTRICTION

--- V --- 70 KILOMETRE PER HOUR VARIABLE BYLAW SPEED RESTRICTION

--- 80 KILOMETRE PER HOUR BYLAW SPEED RESTRICTION

--- DISTANCE IN METRES FROM A SIDE ROAD OR GEOGRAPHICAL FEATURE TO THE SPEED RESTRICTION BOUNDARY

1. SCALES GIVEN ON THIS PLAN ARE APPROXIMATE FOR THE PURPOSE OF LEGAL DESCRIPTION. DIMENSIONS GIVEN ARE THE EXTENT OF THE SPEED LIMIT AREAS. BYLAW

2. ALL LEGEND MARKINGS CROSSING A ROAD ARE DEEMED TO CROSS THE ROAD AT RIGHT ANGLES FROM ONE SIDE OF THE ROAD TO THE OPPOSITE SIDE AT ITS SHORTEST DISTANCE.

3. WHERE NO DIMENSIONS OR DISTANCE IS GIVEN OR SHOWN WHERE LEGEND MARKINGS CROSS A ROAD AT A SIDEROAD, THE MARKINGS ARE DEEMED TO CROSS THE ROAD AT THE PROLONGATION OF THE SIDEROAD CARRIAGEWAY EDGE.

4. ALL LEGEND MARKINGS MARKED ALONG A ROAD ARE DEEMED TO RUN ALONG THE CARRIAGEWAY EDGE OF THE MARKED ROAD UNLESS OTHERWISE DIMENSIONED OR SHOWN.

5. STATE HIGHWAY SPEED RESTRICTIONS ARE NOT SHOWN ON THIS PLAN.

	SURVEYED	N/A	DATE	---
	DESIGNED	N/A	DATE	---
	DRAWN	C. YOUNG	03/09/19	---
	CHECKED	G. O'CONNOR	03/09/19	---
	APPROVED	J. PARRU	03/09/19	---

PREPARED FOR:	

HASTINGS DISTRICT COUNCIL		HASTINGS DISTRICT COUNCIL	
INFRASTRUCTURE		SPEED LIMITS BYLAW 2012	
HASTINGS, TWYFORD AND FLAXMERE			

ISSUE	REGISTER	AMENDMENTS	DATE	SCALES	SHEET
3		2012 SPEED LIMIT BYLAW AMENDMENT, PERTINENT TO 30-01-2014 COUNCIL RESOLUTION		AS SHOWN @ SIZE A1	1 of 4
4		2012 SPEED LIMIT BYLAW AMENDMENTS		DRAWING No.	ISSUE
5		2012 SPEED LIMIT BYLAW AMENDMENT (2018) 02/18		HDC04001/11	7
6		2012 SPEED LIMIT BYLAW AMENDMENT (2019) 09/19			
7		2012 SPEED LIMIT BYLAW AMENDMENT (2020) 12/20			



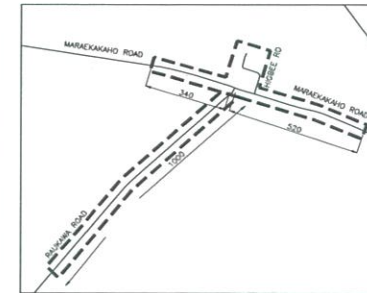
PUKETAPU
SCALE 1:10,000



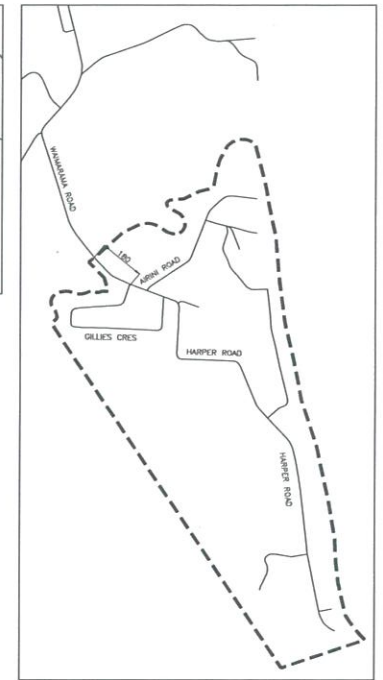
PAKI PAKI
SCALE 1:10,000



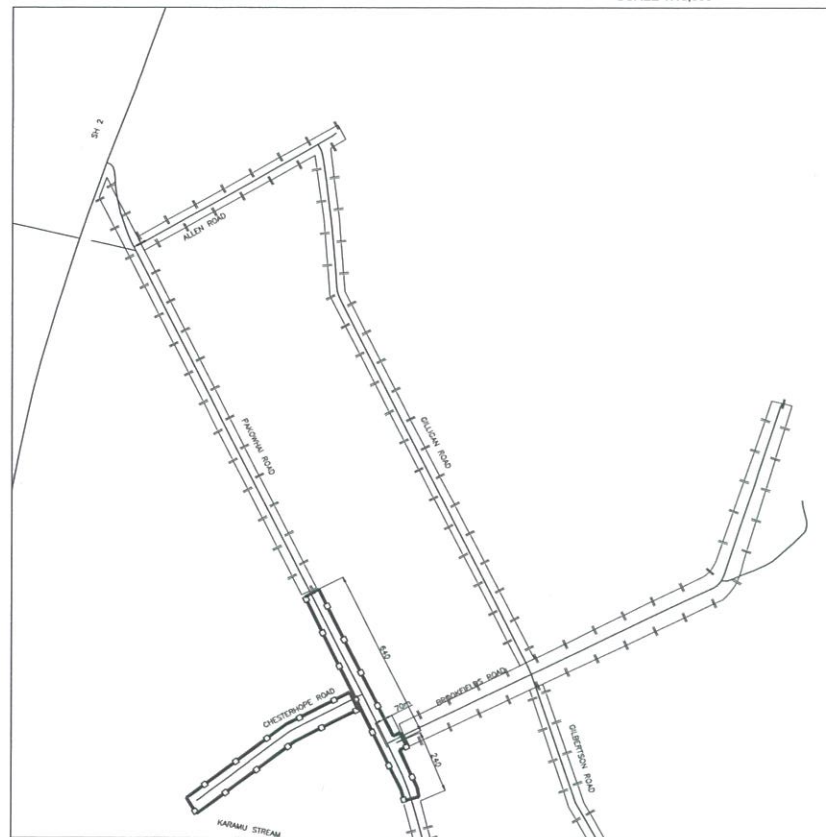
OMAHU & FERNHILL
SCALE 1:10,000



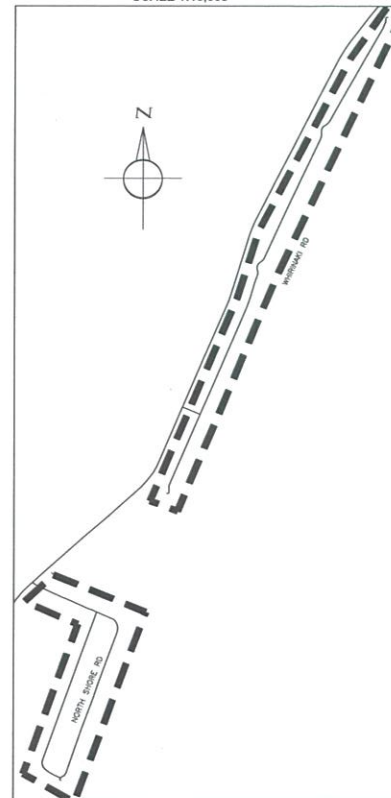
BRIDGE PA
SCALE 1:10,000



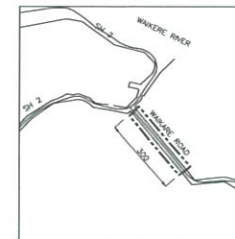
WAIMARAMA
SCALE 1:10,000



PAKOWHAI
SCALE 1:10,000



WHIRINAKI
SCALE 1:10,000



PUTORINO
SCALE 1:10,000

LEGEND

	URBAN TRAFFIC AREA (50km/h)
	50 KILOMETRES SEASONAL SPEED LIMIT (FROM 1st DECEMBER TO THE 31st FEBRUARY)
	60 KILOMETRES PER HOUR BYLAW SPEED RESTRICTION
	70 KILOMETRES PER HOUR BYLAW SPEED RESTRICTION
	80 KILOMETRES PER HOUR BYLAW SPEED RESTRICTION
	DISTANCE IN METRES FROM A SIDE ROAD OR GEOGRAPHICAL FEATURE TO THE SPEED RESTRICTION BOUNDARY

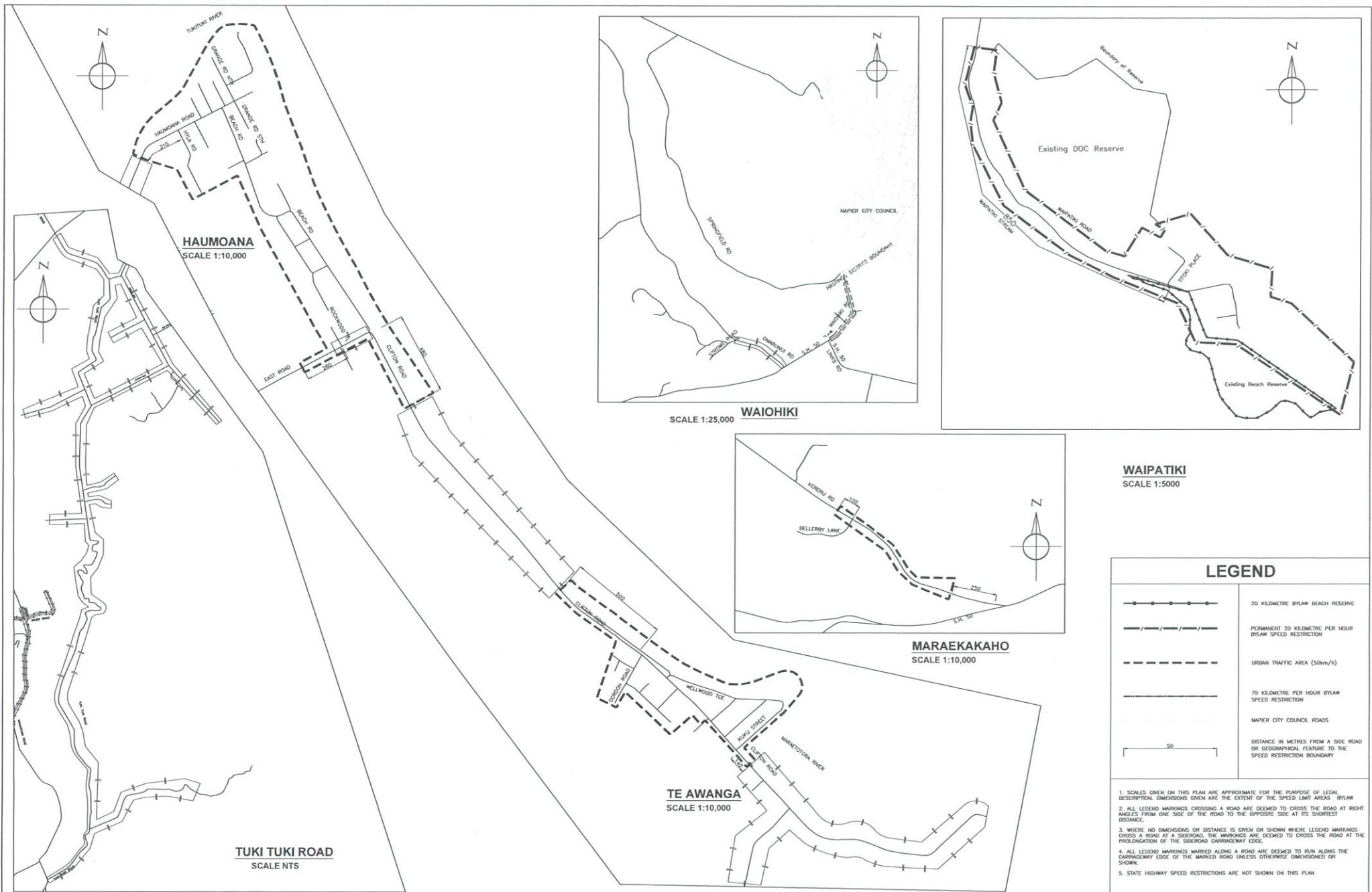
1. SCALES GIVEN ON THIS PLAN ARE APPROXIMATE FOR THE PURPOSE OF LEGAL DESCRIPTION. DIMENSIONS GIVEN ARE THE EXTENT OF THE SPEED LIMIT AREAS. BYLAW PERTINENT TO 30-01-2014 COUNCIL RESOLUTION.
2. ALL LEGEND MARKINGS CROSSING A ROAD ARE DEEMED TO CROSS THE ROAD AT RIGHT ANGLES FROM ONE SIDE OF THE ROAD TO THE OPPOSITE SIDE AT ITS SHORTEST DISTANCE.
3. WHERE NO DIMENSIONS OR DISTANCE IS GIVEN OR SHOWN WHERE LEGEND MARKINGS CROSS A ROAD AT A SIDE ROAD, THE MARKINGS ARE DEEMED TO CROSS THE ROAD AT THE PROLONGATION OF THE SIDE ROAD CARRIAGEWAY EDGE.
4. ALL LEGEND MARKINGS MARKED ALONG A ROAD ARE DEEMED TO RUN ALONG THE CARRIAGEWAY EDGE OF THE MARKED ROAD UNLESS OTHERWISE DIMENSIONED OR SHOWN.
5. STATE HIGHWAY SPEED RESTRICTIONS ARE NOT SHOWN ON THIS PLAN.

	SURVEYED	N/A	NAME	DATE
	DRAWN	N/A		
	CHECKED	C. YOUNG	03/09/19	
	RECOMMENDED	G. O'CONNOR	03/09/19	
	APPROVED	J. PANNU	03/09/19	
PREPARED FOR:				

HASTINGS DISTRICT COUNCIL	HASTINGS DISTRICT COUNCIL
INFRASTRUCTURE	SPEED LIMITS BYLAW 2012
DATE	DATE
RECOMMENDED	APPROVED
DATE	DATE

PUKETAPU, OMAHU AND FERNHILL, WHIRINAKI, WAIMARAMA, BRIDGE PA, PAKI PAKI, PUTORINO AND PAKOWHAI

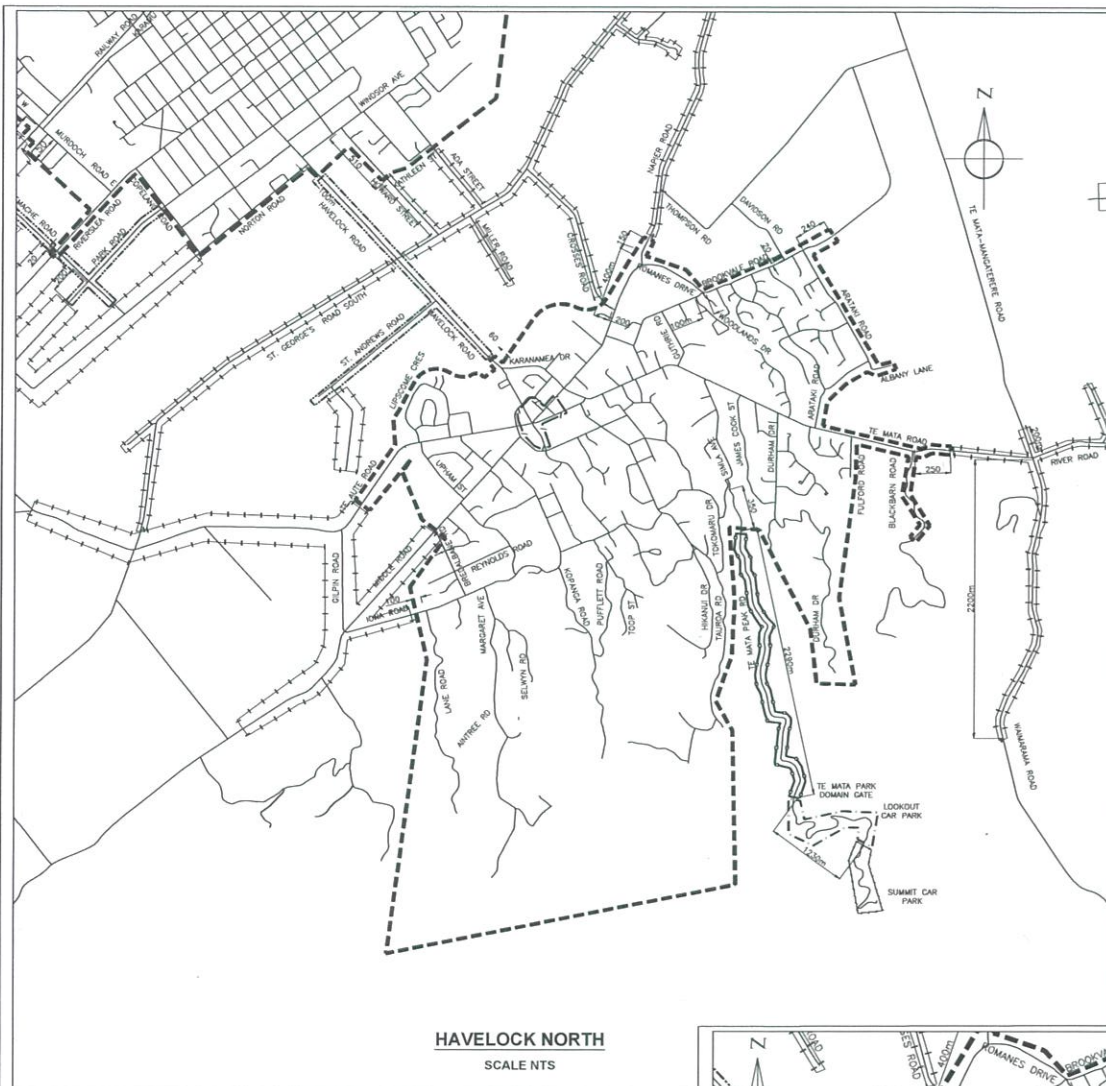
ISSUE	REVISION	AMENDMENTS	DATE	SCALE	SHEET
3		2012 SPEED LIMIT BYLAW AMENDMENT, PERTINENT TO 30-01-2014 COUNCIL RESOLUTION		AS SHOWN @ SIZE A1	2 of 4
4		2012 SPEED LIMIT BYLAW AMENDMENTS		DRAWING No.	ISSUE
5		2012 SPEED LIMIT BYLAW AMENDMENT (2018) 05/18		HDC04001/12	7
6		2012 SPEED LIMIT BYLAW AMENDMENT (2019) 09/19			
7		2012 SPEED LIMIT BYLAW AMENDMENT (2020) 11/20			



LEGEND	
	20 KILOMETRE BYLAW BEACH RESERVE
	PERMANENT 20 KILOMETRE PER HOUR BYLAW SPEED RESTRICTION
	URBAN TRAFFIC AREA (50km/h)
	70 KILOMETRE PER HOUR BYLAW SPEED RESTRICTION
	NAPIER CITY COUNCIL ROADS
	DISTANCE IN METRES FROM A SIDE ROAD OR GEOGRAPHICAL FEATURE TO THE SPEED RESTRICTION BOUNDARY

1. SCALES GIVEN ON THIS PLAN ARE APPROXIMATE FOR THE PURPOSE OF LEGAL DESCRIPTION. DIMENSIONS GIVEN ARE THE EXTENT OF THE SPEED LIMIT AREAS. BYLAW
2. ALL LEGEND MARKINGS CROSSING A ROAD ARE DEEMED TO CROSS THE ROAD AT RIGHT ANGLES FROM ONE SIDE OF THE ROAD TO THE OPPOSITE SIDE AT ITS SHORTEST DISTANCE.
3. WHERE NO DIMENSIONS OR DISTANCE IS GIVEN OR SHOWN WHERE LEGEND MARKINGS CROSS A ROAD AT A SIDEROAD, THE MARKINGS ARE DEEMED TO CROSS THE ROAD AT THE PROLONGATION OF THE SIDEROAD CARRIAGEWAY EDGE.
4. ALL LEGEND MARKINGS MARKED ALONG A ROAD ARE DEEMED TO RUN ALONG THE CARRIAGEWAY EDGE OF THE MARKED ROAD UNLESS OTHERWISE DIMENSIONED OR SHOWN.
5. STATE HIGHWAY SPEED RESTRICTIONS ARE NOT SHOWN ON THIS PLAN

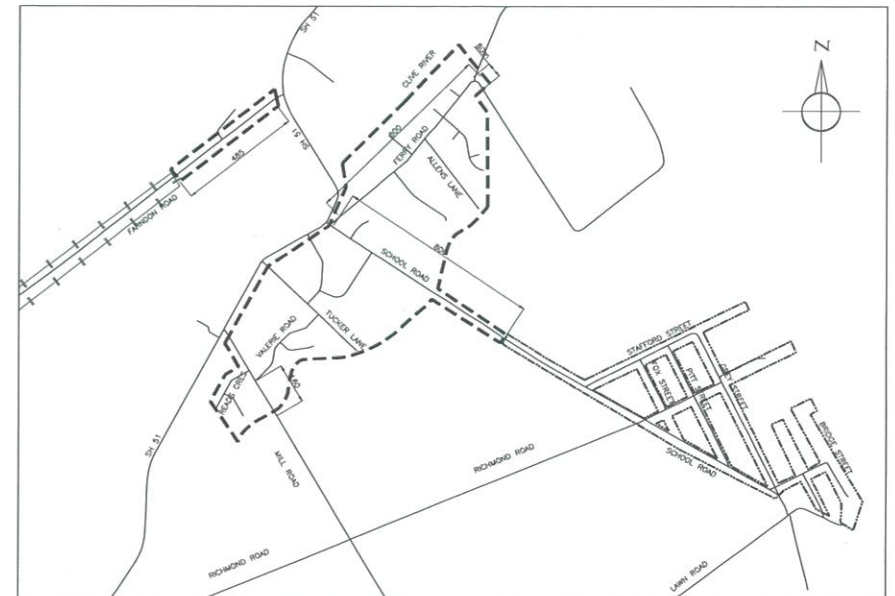
		HASTINGS DISTRICT COUNCIL INFRASTRUCTURE		HASTINGS DISTRICT COUNCIL SPEED LIMITS BYLAW 2012		AMENDMENTS 2012 SPEED LIMIT BYLAW AMENDMENT, PERTINENT TO 30-01-2014 COUNCIL RESOLUTION 2012 SPEED LIMIT BYLAW AMENDMENT (2018) 07/18 2012 SPEED LIMIT BYLAW AMENDMENT (2019) 09/19 2012 SPEED LIMIT BYLAW AMENDMENT (2020) 12/20		SCALES AS SHOWN @ SIZE A1 DRAWING No.		SHEET 3 of 4 ISSUE	
SURVEYED: N/A DESIGNED: N/A DRAWN: C. YOUNG CHECKED: G. O'CONNOR RECOMMENDED: G. O'CONNOR APPROVED: J. PANNU		NAME: _____ DATE: _____ PREPARED FOR:		HASTINGS DISTRICT COUNCIL HAUMOANA, TE AWANGA, WAIPATIKI, MARAEKAKAHO AND WAIOHIKI		HDC04001/13		7			



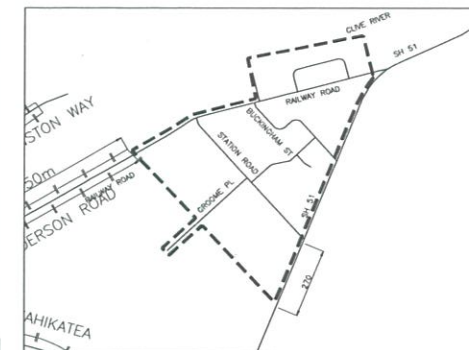
HAVELOCK NORTH
SCALE NTS



HAVELOCK NORTH CBD SCALE NTS



CLIVE
SCALE 1:10,000



WHAKATU
SCALE 1:10,000

LEGEND

	20 KILOMETRE PER HOUR BYLAW SPEED RESTRICTION
	PERMANENT 30 KILOMETRE PER HOUR BYLAW SPEED RESTRICTION
	40 KILOMETRE PER HOUR BYLAW SPEED RESTRICTION
	URBAN TRAFFIC AREA (50km/h)
	60 KILOMETRE PER HOUR BYLAW SPEED RESTRICTION
	70 KILOMETRE PER HOUR BYLAW SPEED RESTRICTION
	80 KILOMETRE PER HOUR BYLAW SPEED RESTRICTION
	DISTANCE IN METRES FROM A SIDE ROAD OR GEOGRAPHICAL FEATURE TO THE SPEED RESTRICTION BOUNDARY

1. SCALES GIVEN ON THIS PLAN ARE APPROXIMATE FOR THE PURPOSE OF LEGAL DESCRIPTION. DIMENSIONS GIVEN ARE THE EXTENT OF THE SPEED LIMIT AREAS. BYLAW.
2. ALL LEGEND MARKINGS CROSSING A ROAD ARE DEEMED TO CROSS THE ROAD AT RIGHT ANGLES FROM ONE SIDE OF THE ROAD TO THE OPPOSITE SIDE AT ITS SHORTEST DISTANCE.
3. WHERE NO DIMENSIONS OR DISTANCE IS GIVEN OR SHOWN WHERE LEGEND MARKINGS CROSS A ROAD AT A SIDEROAD, THE MARKINGS ARE DEEMED TO CROSS THE ROAD AT THE PROLONGATION OF THE SIDEROAD CARRIAGEWAY EDGE.
4. ALL LEGEND MARKINGS MARKED ALONG A ROAD ARE DEEMED TO RUN ALONG THE CARRIAGEWAY EDGE OF THE MARKED ROAD UNLESS OTHERWISE DIMENSIONED OR SHOWN.
5. STATE HIGHWAY SPEED RESTRICTIONS ARE NOT SHOWN ON THIS PLAN.

	SURVEYED	N/A	DATE	-
	DESIGNED	N/A	DATE	-
	DRAWN	C. YOUNG	03/09/19	
	CHECKED	G. O'CONNOR	03/09/19	
	RECOMMENDED	G. O'CONNOR	03/09/19	
APPROVED	J. PANNU	03/09/19		

PREPARED FOR:	
HASTINGS DISTRICT COUNCIL	

HASTINGS DISTRICT COUNCIL	
INFRASTRUCTURE	
DATE:	DATE:
APPROVED:	APPROVED:

HASTINGS DISTRICT COUNCIL	
SPEED LIMITS BYLAW 2012	
HAVELOCK NORTH, CLIVE AND WHAKATU	

ISSUE	REVISION	AMENDMENTS	DATE	SCALES	SHEET
3		2012 SPEED LIMIT BYLAW AMENDMENT, PERTINENT TO 30-01-2014 COUNCIL RESOLUTION		AS SHOWN @ SIZE A1	4 of 4
4		2012 SPEED LIMIT BYLAW AMENDMENTS		DRAWING No.	ISSUE
5		2012 SPEED LIMIT BYLAW AMENDMENT	2018/02/18		
6		2012 SPEED LIMIT BYLAW AMENDMENT	2019/09/19		
7		2012 SPEED LIMIT BYLAW AMENDMENT	2020/12/20		
Copyright in this drawing is held by the Hastings District Council. Any unauthorised reproduction in any form without the written permission of the Hastings District Council is prohibited.				HDC04001/14	7