

Cyclone Gabrielle updates

Message from the Mayor

More funding to help residents is being allocated from the Hawke's Bay Disaster Relief Fund, with the owners of red and yellow stickered homes in Hastings about to receive \$2000.

The process is being worked through and more information will be made available on Council's website as soon as possible.

If Council holds the property owner's bank details, the refund will be automatic. Our team will be contacting those we don't, to get those details.

I was extremely pleased last week to see the \$6b investment in the reinstatement of critical local and national infrastructure announced – we are looking into the allocation details, but it is certainly very good news.

Also announced was \$65m to fund community connectors to assist with the recovery of our most cyclone-affected residents. This is something we, along with other impacted councils, requested and will be so important as we work with our residents on how they plan for the future.

These are on top the announcements the weekend prior, which had specific amounts included for the rebuilding of roads and bridges (\$16m) and a \$100m fund for reinstating flood protection.

I do look forward to information on how Government plans to help support our incredibly hard-hit primary sector.

More broadly, the Government's commitment to building more houses and supporting infrastructure will be a huge help to many of our people during these tough times.



Kia Kaha

Sandra Hazlehurst

UPDATE FROM NEW ZEALAND RED CROSS

To date \$3,231,277 from the New Zealand Disaster Fund has been allocated to Hawke's Bay.

Due to the very large number of applications received - which will likely exhaust the funding available, the grants process for new applications will be paused as of 5pm Thursday 25 May.

For a breakdown of the latest grants approved and other information from New Zealand Red Cross, visit: www.redcross.org.nz/about-us/news/our-stories/helping-communities-now-and-in-the-future



New Zealand

Disaster Fund

An update on

what we're doing

RED AND YELLOW-STICKERED PROPERTY OWNERS TO GET SUPPORT PAYMENT

Owners of red and yellow stickered properties damaged by Cyclone Gabrielle in Hastings district will receive one-off support payments through the Hastings Mayoral Relief Fund in coming weeks.

The Hastings, Wairoa, Central Hawke's Bay and Napier mayoral funds were this week bolstered by a bulk payment of \$2.5m across all councils by the Hawke's Bay Disaster Relief Trust.

Hastings' share will be allocated to owners of red and yellow stickered properties, who will receive \$2000 each.

If Council holds your bank account details your payment will be processed as soon as possible. If Council does not hold your bank account details (or you are unsure if it does) you can fill in the form at <https://hdc.smartygrants.com.au/StickeredProperty>

Read more here: www.hastingsdc.govt.nz/home/article/2751/red-and-yellow-stickered-property-owners-to-get-support-payment



TEMPORARY ACCOMMODATION SERVICE

TAS supports displaced households with temporary accommodation while their homes are repaired or rebuilt.

'Temporary' does not mean a few weeks or months - TAS offers solutions based on individual households' circumstances. In many cases this may mean supporting households for many months or possibly even years while their homes are repaired or rebuilt.

TAS makes use of a variety of accommodation options to cater to household needs, this is normally hotels or motels in the short term. As the response progresses, they will look to offer families stability through longer term options like rentals, relocatable cabins and eventually temporary housing villages if required.

There is a cost for temporary accommodation by way of partial payments. Renters will need to cover a set amount of the total rent based on the number of rooms (e.g. \$250 for a one bedroom property to \$500 for a four bedroom property); TAS will cover the remaining cost of the accommodation.

The only criteria for getting help from TAS is that you are displaced - it is not means tested, it doesn't matter if you were an owner or renter, and it doesn't matter if you are getting help from insurance or not.

To help TAS plan, we encourage anyone needing temporary accommodation as a result of Cyclone Gabrielle to register with the service now, even if you think you might be okay right now. You can register online at www.tas.mbie.govt.nz or phone 0508 754 163

For more information, visit: www.hastingsdc.govt.nz/cyclone-gabrielle/financial-support

**TEMPORARY
ACCOMMODATION
SERVICE**

SILT

KEY STATS

Up to 19 May 2023

398 jobs
RECEIVED

APPROXIMATELY
250,000m³
OF SILT COLLECTED

AROUND
900 truck
movements
PER DAY THIS WEEK

Find out more about handling the silt, silt sampling results, and how to request a silt collection on the Hawke's Bay Regional Council website: www.hbrc.govt.nz/our-council/cyclone-gabrielle-response/dealing-with-waste.

ROADS & BRIDGES

Hastings roads & bridges

- **Whanawhana bailey bridge** – Opened 15 May, some works being completed alongside being open. (Class 1 / General Access traffic loading)
 - **Ellis-Wallace bailey bridge** – Estimated to open beginning of June.
 - **Mangatutu low-level crossing** – Estimated to open 3 June.
 - **Moeangiangi low-level crossing** – Estimated to open 9 June.
- Note: Some of the bridges may be subject to weight and speed limits and Council asks that their use be limited as much as possible to residents and essential services only.*
- **Redclyffe bridge** – Demolition of existing bridge structure continues. The earliest estimated completion of a temporary bridge is end of June.
 - **Crownthorpe bridge** - Due to be completed end of June.
 - Solutions for the remaining structures including **Brookfield, Darkeys Spur No1, Puketapu and Kereru Rd Gorge bridges** continue to be investigated.

For the most up-to-date information on road closures and the repair status of Hastings District bridges visit: www.hastingsdc.govt.nz/services/roads-and-streets/road-works.

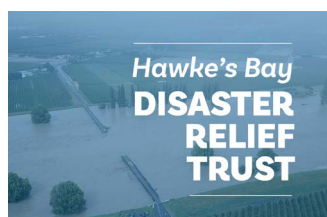
Waka Kotahi roads & bridges

- **State Highway 2 Napier to Wairoa:** Please note the stretch of road between Aropanui Road to Waikoau Hill remains closed overnight between 6pm and 7am until further notice. The rest of the state highway is open 24/7.
- **SH5 bypass between Te Pōhue and Glengarry:** State Highway 5 Napier – Taupō Road will close for six hours overnight next Wednesday (24 May) for urgent work to the temporary bypass between Te Pōhue and Glengarry. The road will close at 9pm on Wednesday (24 May) and reopen at 3am the following morning (Thursday 25 May). The closure starts at the gates near Hedgeley Road in Eskdale and near Caroline Drive just south of Taupō; there will also be a closure point at Glengarry Road. Residents will require proof of address for access.

HAWKE'S BAY DISASTER RELIEF TRUST PHASE TWO FUNDING

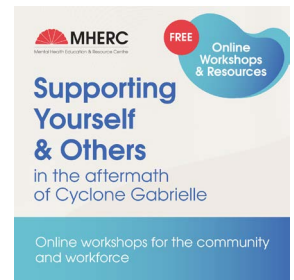
The second phase of the Hawke's Bay Disaster Relief Trust is open. This funding is for our most impacted residents who have incurred significant personal cost not covered by other funding. Individuals, community groups and marae can apply for grants of up to \$10,000.

To complete an application, head to: <https://hdc.smartygrants.com.au/HBDRF>



SUPPORTING YOURSELF AND OTHERS – FREE ONLINE WORKSHOPS AND RESOURCES

The Mental Health Education & Resource Centre (MHERC) has a range of FREE workshops and resources in response to Cyclone Gabrielle for the community and the workforce - including first responders, frontline staff and others working with cyclone-affected communities.



Workshops include:

- **Recognising and Responding to Psychological Distress in the Community**
Learn fundamental skills to understand and support others who may be experiencing mental distress and/or mental illness, especially from the impacts of the cyclone. Wednesday 14 June, 7.00pm-8.30pm
- **Understanding and Managing Change**
Explore aspects of perception and control and how these processes play a key role in managing change. Thursday 8 June, 10.30am-12.00pm | Thursday 22 June, 7.00pm-8.30pm
- **Impacts of Trauma on Sleep and Life**
Discover the impacts of trauma and other ongoing challenges on the brain, body and mind. Gain practical strategies to support regulation, sleep and life. Tuesday 13 June, 10.30am-12.00pm | Monday 26 June, 2023 - 7.00pm-8.30pm

Register at www.mherc.org.nz. For more information contact: info@mherc.org.nz or 0800 424 399.

TE WHATU ORA: SUPPORTING OUR COMMUNITY

Te Whatu Ora funds a number of free and easily accessible wellbeing supports. These include face-to-face primary mental health and addiction support via participating GPs clinics, Kaupapa Māori, Pacific and Youth specific services. These services are free and available without a referral.

Where you can seek help

- Log into www.wellbeingsupport.health.nz to find a service close to you or you can call or text Need to Talk 1737 any time to talk with a trained counsellor.
- At most general practices you can phone and book in to see a Health Improvement Practitioner (HIP), a registered mental health professional who provides advice and support promoting self-management, and connects people to other services they may need. Every day, HIPs have appointments that are not pre-booked so you can phone a general practice where you are enrolled and book in on that day.
- **The Depression Helpline** – Call 0800 111 757 or text 4202 to talk to a trained counsellor about how you are feeling or to ask any questions.
- **Youthline** – Call 0800 376 633, text 234, email talk@youthline.co.nz, or go to youthline.co.nz for an online chat.
- **The Lowdown** – Text 5626 for support to help young people recognise and understand depression or anxiety.
- **Healthline** – Call 0800 611 116 for health advice and information.
- **Alcohol Drug Helpline** – Call 0800 787 797 to speak with a trained counsellor.
- Tips and support, go to allsorts.org.nz.

Free wellbeing apps

- You can download the Groov and Headstrong wellbeing apps free for android and Apple phones. Just go to Google Play or the Apple app store.