

HAVELOCK NORTH DAMS AND STREAMS



Community newsletter

29 February 2024

Kia ora and welcome to the February 2024 newsletter for the Havelock North dams and streams community.

In this issue we update you on work that has happened along the streams in February, what mahi has progressed on the strategy, and let you know what's coming up.

Work in February

In the last month we have:

- removed an dumped furniture and small trees from the Mangarau Stream
- Carried out inspections of the Mangarau, Te Kahika, and Herehere streams following community reports of debris and/or trees in the streams
- Carried out a camera inspection of one of the pipes under the Mangarau Dam as part of planned maintenance (check out the fun fact at the end of the newsletter for more info)

Work coming up

In the next month to six weeks the team is planning to:

- Remove concrete debris and a large tree in Mangarau Stream (see more below)
- Survey all five Havelock North streams using a drone (see more below)
- Working through procuring a maintenance contractor
- Use a scrub bar and long reach mower to clear sections of stream banks
- Carry out a camera inspection of a storm water pipe discharging into Mangarau stream as part of planned maintenance (check out the fun fact at the end of the newsletter for more info)

The team is continuing work on the project plan and design scope for implementing the 2c report recommendations. In the next few weeks we are working through defining responsibilities in the complex relationship between Council and private property owners in relation to the streams and banks.

Ahead of the introduction of new government regulations for dams in May (Potential Impact Classification - PIC), Council has contracted Stantec to identify what is required to ensure Hastings' dams meet those regulations.

Work on the Emergency Action Plan (EAP) is underway, as we noted in our last update. At this

stage, the focus is on evaluating the best methods for getting messages to the community if there is a risk of a dam or stream emergency. The development of the EAP is on track, and we will be presenting to the community in the next few months.

Mangarau Stream concrete removal

Concrete blocks that were undermined and fell into the Mangarau Stream during the cyclone are now being removed. The concrete blocks are on the stream bed and embankment. The majority of the blocks are out of the natural channel which means they do not restrict normal to above average flows, but need to be removed in case of higher flows.

Removing the blocks is a complex and major piece of work that entails creating access that will enable us to bring in a 55T Crane to lower in a 5T excavator with a rock breaker.

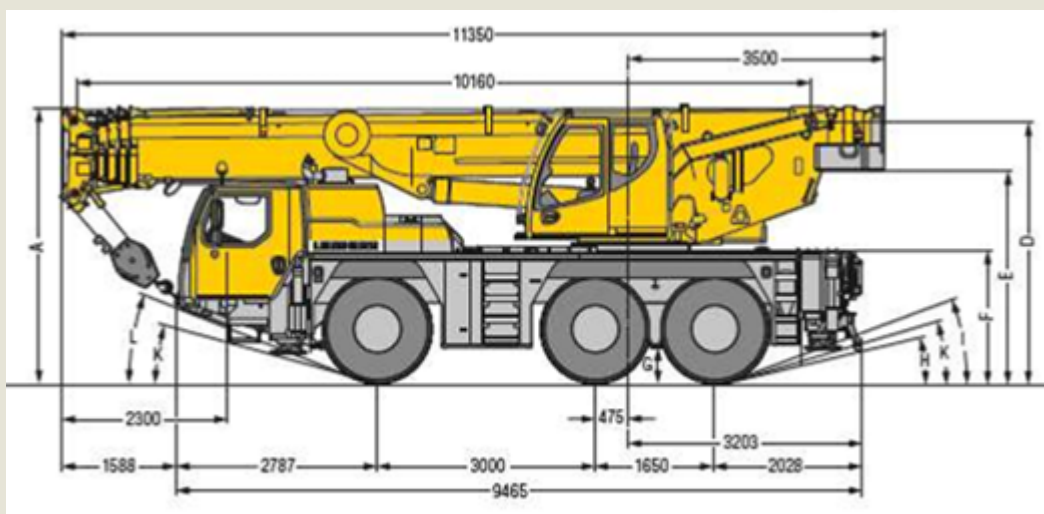
The image below is of the crane that will be used and, you can find more [information on the machinery that will be used in this infosheet](#).

The concrete blocks require a large excavator with a grapple to remove as they don't have eye bolts, known as lifting eyes, and are partially buried.

Hawke's Bay Regional Works Group and Lattey Group will be working together on the removal. On Monday 4 March the crews will set up the site, and on Tuesday 5 March they will remove the concrete and load the debris into a skip which will be trucked off site.

The concrete square mass blocks nearby will be removed at a later date, when future retaining works are better understood.

There are some trees just upstream of the blocks which also need to be removed. They will be winched out at a later date. Tree management company Pro Arbore will carry out the project and remove additional trees at risk of falling into the stream.



Drone survey of all five streams

Council is undertaking a drone survey of all five Havelock North streams which receive stormwater from the Havelock North dams in March.

This is part of our next stage of work to inform and undertake further refinement of options to support Category 2c properties move to 1, as well as for overall engineering analysis and design to aid cyclone damage remediation and improve stormwater infrastructure across all five streams.

The work involves using an unmanned aerial vehicle (UAV)/drone to capture LiDAR and photographic information of watercourses. The Surveying Company HB is doing the work, which will involve flying the UAV over the streams and near properties that neighbour the streams, approximately 80m above ground.

We've sent an email to residents (or a letter if we do not have an email address) that live directly beside the stream.

Other cyclone-related work going on in Havelock North

Hikanui Pā tree removal

A stand of pine, macrocarpa, and gum trees damaged during Cyclone Gabrielle is being removed from Hikanui Pā in Tainui Reserve. The work will begin next week and take up to six weeks to complete (weather dependent). Heavy machinery and a helicopter will be used to remove the trees.

Most of Tainui Reserve will be closed while work occurs for the safety of the community. The removal of the remaining stand will allow for stabilisation matting to be installed and new planting.

Find out more [here](#).



Did you know?

CCTV inspection of pipes along the stream is normally carried out every five years. Council is looking for any changes within the pipe from previous inspections.

The camera is normally driven up the pipe from the outlet to the inlet. The camera can be tilted within the pipe to check on the joints and look for cracks.



TE KAUNIHERA Ā-ROHE O HERETAUNGA
HASTINGS DISTRICT COUNCIL

207 Lyndon Road East, Hastings 4122 | Private Bag 9002, Hastings 4156
06 871 5000 | customerservice@hdc.govt.nz | hastingsdc.govt.nz

Copyright © Hastings District Council, All rights reserved.

Our mailing address is: customerservice@hdc.govt.nz

Want to change how you receive these emails?
You can [update your preferences](#) or [unsubscribe from this list](#)