

HAVELOCK NORTH DAMS AND STREAMS

November 2024 newsletter

COMMUNITY UPDATE

Kia ora and welcome to the November 2024 newsletter for the Karanema Havelock North dams and streams community.

It's been a busy month with a lot of work underway. We also held our third community advisory group meeting.

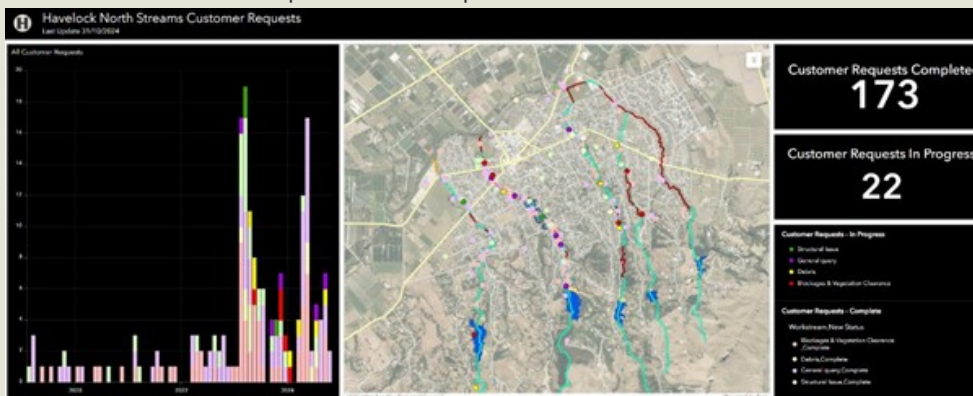
In this issue we update you on wider dams and stream work, tools being developed to support stream management and our ongoing focus areas.

Work in November 2024

In the last month:

- the maintenance contractor has sprayed and mowed all dams and sections of reserves
- closed off several active maintenance requests
- identified larger maintenance jobs that will require site specific planning
- continued to monitor and update the customer requests dashboard – available [here](#).

The latest overview of our open customer requests is below.



In November 2024, we have undertaken the following maintenance activities:

- Herehere mowing/ scrub barring of stream
- new fence installed around Mangarau Dam
- mowing of all dams
- cleaned the water storage area at the bottom of Keirunga Gardens that holds water and flows through into the Mangarau stream, allowing greater capacity to be stored
- inspected the pipe under Tanner Street bridge from the storage area
- cleaned true left banks of lower Herehere
- sprayed Herehere Stream
- cleared debris from the Te Kahika Stream



Figure 1: Mangarau dam mowing and fence readjustment.



Figure 2: Spraying of Herehere Stream.

Spraying

Our maintenance work ensures we keep drains clear of blockages and reduces the spread of plant pests such as water celery, blackberry, fennel, cow cress and hemlock.

The work varies for each waterway but typically includes mowing and weed spraying, which may be required up to five times annually depending on growth. Spraying is considered only necessary where we have difficult to reach locations that can't be reached by mower.

All weed spraying operations are undertaken by Growsafe-certified staff or contractors, and the agrichemicals used are Glyphosate 510 and or Metsulfuron-methyl, as approved by the Environmental Protection Agency (EPA).

All our staff are licenced, trained and competent in the machinery they operate and the tasks they undertake. All staff complete a daily site safety plan and undertake continual hazard identification of the worksite, along with adhering to the requirements of Council's operational Codes of Practice.

For any work not deemed routine maintenance, such as drain excavation, culvert construction, or general inspections, we will contact households through letter drops before we begin any work. You can find out more about our maintenance programme [here](#).

Arborist review of vegetation

Arborist assessments have finished with only a few trees identified as at risk.

Findings are in draft, however, the key recommendations from the arborist are:

- trees within stream systems should be checked every five years to assess risks to the stream, as well as following any significant storm event.

- aerial mapping, used through this review, is an effective way to monitor tree conditions along the stream and analyse canopy cover.
- 59% of the total land area within the defined stream boundaries have canopy cover. (Boundaries are typically defined as the stream corridor six metres from the top of the stream bank)
 - 31% of total canopy cover is on public land.
 - 28% of total canopy cover is on private land.
- 8% of the total canopy loss occurred between 2022 and 2024.
 - 5% of total canopy loss occurred on Council land.
 - 3% of total canopy loss occurred on private land.

1. planting is vital
2. maintenance activities identified and required are minor and in targeted locations

Below is an example of a maintenance recommendation for height reduction in the Tauroa Reserve, which could be used to reduce the risk of tree failure but avoid tree removal. The section in red is recommended to be trimmed by our specialist arborist. This will be considered by the parks and streams teams for action if deemed necessary.

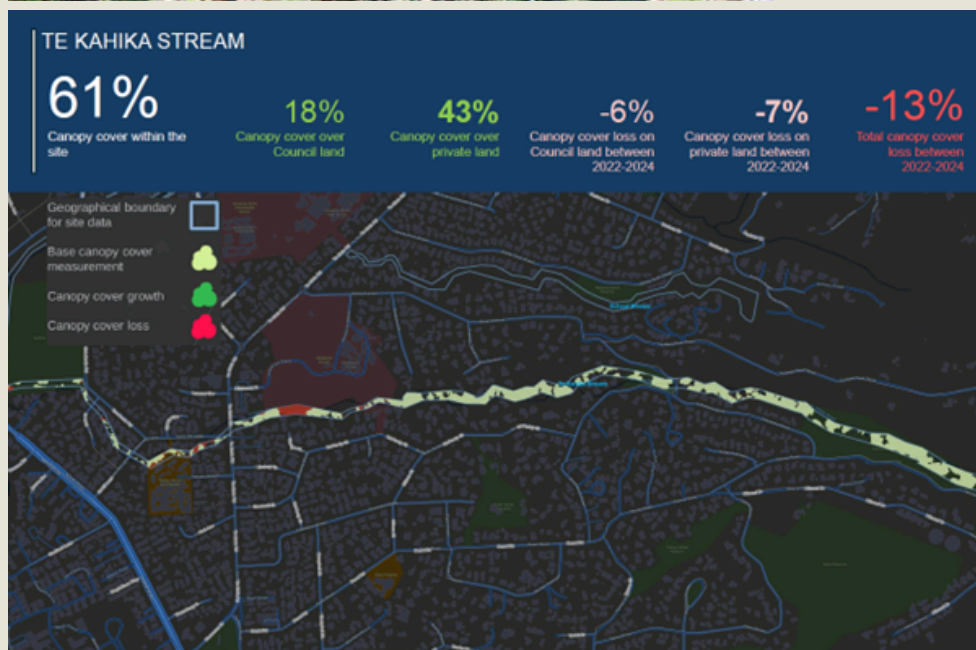


Figure 3: Overview of canopy change in Te Kahika Stream

Structural, planning and design work

- Our design partner, Tonkin & Taylor, continues to design the first stage of the 2C area construction, with site visits and information review underway – enabling works to start next week with construction of Stage 1 works in early 2025.
- A trial is underway ahead of the first stage of stream monitoring equipment being installed. Two locations have been selected with a further 13 to follow in 2025. Once the three-month trial is complete the information will be reviewed and the rest of the sensors installed, if the system provides the information needed.
- The Tainui Reserve wastewater pipe upgrade design is complete, and consenting is progressing. We have met with Council's parks team and Fulton Hogan to discuss the upgrading of other wastewater pipes crossing streams.
- Work continues on hydraulic modelling to inform planning and design. We are comfortable the outputs and the model accurately represent actual flows, water level and velocity during different rain events.
- Work with landowners adjacent to streams on the design of bank repair solutions continues.
- the Havelock North community advisory group has reviewed the stream bank management guidance, including a planting plan and associated guidance document.
- The development of Council/landowner stream responsibility guidance is progressing and has been tested with the community advisory group.

Engagement through the Community Advisory Group

We held our third community advisory group meeting of the year. At this session we:

- workshopped stream bank and planting guidance
- discussed maintenance across streams and dams – including the dam safety review and its next steps
- talked through some early stormwater hydraulic modelling results including velocities and water levels during events and how informed bank solutions could require either hard or soft engineering solutions like planting or retaining walls
- focused on landowner and Council responsibilities and the approach Council should take rolling guidance on this out. provided an update on maintenance plans, expected levels of service and open customer service requests.

Future group meetings will focus on reviewing and endorsing guidance documents for community roll out, understanding streams and parks overlap and agreeing future topics.

Council policy

- Work is progressing to confirm landowner/Council maintenance responsibilities and have these communicated and explained to landowners.
- Alongside this, a framework is under development to inform if, when and how Council may assist landowners with either advice and when council would contribute financially if it is related to a stream bank that has failed in private property. This looks at different scenarios where Council may or may not have access or be a landowner of part of the failed bank area.
- Work has progressed with the Bank Remediation Guidance document following the last community meeting, the guidance is designed to aid landowners when reviewing their property and selecting solutions suitable to them. Due for public release February 2025.

Work coming up

Over the next six weeks the team is planning to:

- continue bank or asset remediations on Council land, and support landowners on private land with design and construction
- complete our tools to support stream bank management
 - stream bank management guide
 - planting guidance
- begin replacing a wastewater crossing in the Tainui Reserve (subject to consent).

- commence physical work within the 2C area
- prioritise recommendations from 2024 dam safety inspections and begin some of the maintenance and higher priority works identified
- progress emergency planning with Councils' risk team as interim steps, as the dam emergency action plan and impact classifications are completed
- begin a review of the lower St Hill Lane area, the piped section of the stream bypass and the overland flow of water that happens in the area
- begin a review of erosion (actual and forecast) along the streams, updating 2014 work modelling, considering the Cyclone Gabrielle event, updated modelling, planned maintenance, and more recent information
- install trial stream monitoring devices.

Thanks for your support in 2024 and taking the time to read these updates. We look forward to continuing this important mahi, with our first newsletter to you in February 2025.

Have a lovely summer break,

Darren de Klerk

Karanema Havelock North Stream Programme Manager.

[Havelock North streams and dams web hub](#)



TE KAUNIHERA Ā-ROHE O HERETAUNGA
HASTINGS DISTRICT COUNCIL

207 Lyndon Road East, Hastings 4122 | Private Bag 9002, Hastings 4156
06 8715000 | customerservice@hdc.govt.nz | hastingsdc.govt.nz

Copyright © Hastings District Council, All rights reserved.

Our mailing address is: customerservice@hdc.govt.nz

Want to change how you receive these emails?
You can [update your preferences](#) or [unsubscribe from this list](#)