

HAVELOCK NORTH DAMS AND STREAMS



COMMUNITY UPDATE

Kia ora and welcome to the October 2024 newsletter for the Karanema Havelock North dams and streams community.

It's been a busy month. We held our second community advisory group meeting, improved maintenance with our maintenance contractor, now contracted and up and running, and progressed the design for the 2Carea.

In this issue we update you on wider dams and stream work, strategy development and what is coming up.

Work in October 2024

In the last month:

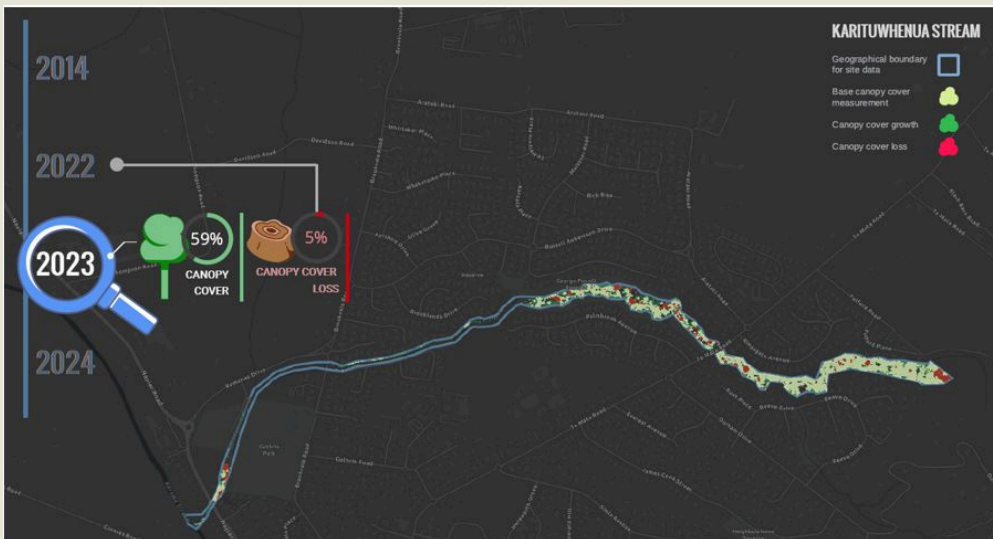
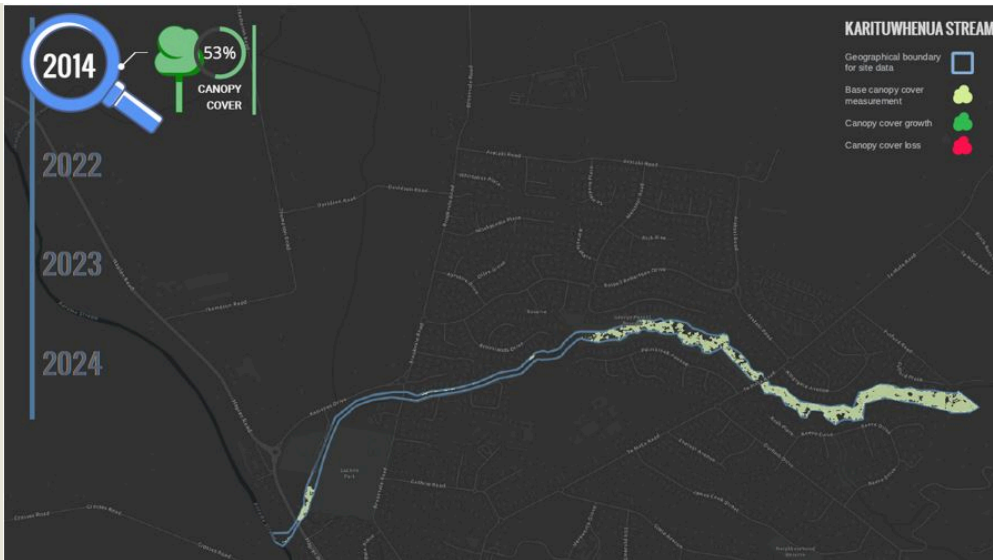
Maintenance and customer requests

- The new maintenance contractor, Hawke's Bay Regional Council Works Group, started work and has begun the first quarterly inspections and related physical debris clearance, and clearing outstanding customer enquiries.
- The maintenance contractor continues proactive maintenance such as mowing, spraying, debris clearance and weed eating of streams and dams. (See photos below)
- The repair of a damaged bank on the lower Mangarau Stream has been completed, in a section owned by Council, as has maintenance at another location in the 2C area following a fallen tree.
- Our customer requests dashboard remains live and is updated monthly – accessed [here](#).

Arborist review of vegetation

Our arborist has undertaken condition assessments of trees along the streams and has provided a draft plan, which completes the survey work. Most assessments are complete and only two trees have been identified as at risk to date. The below image shows the canopy cover in the Karituwhenua over a period of years, including before and after the cyclone, this is using our latest survey and regional LiDAR to assess change.

Our latest survey and regional LiDAR to assess change.



Below is another aerial image showing the comparison along the Karituwhehua in the Palmbrook Reserve from 2022 to 2024.



Fig.10 Aerial image taken in 2022, highlighting canopy cover just north of Te Mata Rd.



Fig.11 Aerial image taken in 2024, highlighting the loss of canopy cover and the stormwater channel carved out during the extreme weather event.

Structural, planning and design work

- Our design partner, Tonkin & Taylor, began work on designing the first stage of the 2C area construction, with site visits and information review underway.
- Options are currently being reviewed for further development on the placement of stream monitoring equipment to be installed at the first stage of locations, with approximately nine of the 15 locations identified.
- The Tainui Reserve wastewater pipe upgrade design is complete and consenting is progressing. We have met with the Council's parks team and Fulton Hogan to discuss the plans for the upgrading of other wastewater pipes crossing streams.
- Work has continued on the hydraulic model to inform planning and design. We are now far more comfortable with the outputs and that the model more accurately represents actual flows, water level and velocity during different rain events.
- We have continued to work with landowners adjacent to streams on the design of bank repair solutions.
- The community advisory group has reviewed the stream bank management guidance, including a planting plan and associated guidance document
- Work has continued on the development of Council/landowner stream responsibility guidance.

Engagement

- We have held our second community advisory group meeting and introduced a draft stream bank management guide.
- We have provided an update on maintenance plans, expected levels of service and open customer service requests.

Council policy

- Work is progressing to confirm landowner/Council responsibilities and have these communicated and explained to landowners to support maintenance work.

- Alongside this, a framework is under development to inform if, when and how Council may assist landowners with either advice or financial contribution to a council asset related to a stream bank that has failed in private property. This looks at different scenarios where Council may or may not have access or be a landowner of part of the failed bank area.

Work coming up

In the next month to six weeks the team is planning to:

- continue bank or asset remediations on Council land, and support landowners on private land with design and construction
- complete our draft stream bank management guide and plan to roll out to landowners
- complete our draft planting guidance for Karanema Havelock North streams
- commence replacing a wastewater crossing in the Tainui Reserve (subject to consent).
- commence physical works within the 2C area
- prioritise recommendations from 2024 dam safety inspections and commence some of the maintenance and higher priority works identified
- progress emergency planning with Councils' risk team as interim steps, as the dam emergency action plan and impact classifications are completed
- begin a review of the lower St Hill Lane area, the piped section of the stream bypass and the overland flow of water that happens in the area

begin a review of erosion (actual and forecast) along the streams, updating 2014 work modelling, taking into account the Cyclone Gabrielle event, updated modelling, planned maintenance, and more recent information



Mangarau Stream repair works to Drainage/ stream Embankment



Mangarau Stream debris clean up



Te Kahika stream debris clearance

Drone survey of dams

A drone survey was completed in September 2024 to inform the intermediate dam safety review. Alongside this work, the survey replaced a 2015 topographical survey and will support any future design work required. Below are aerial photographs from this drone survey.

We understand our latest dam landowner mailing list was out of date. This has been updated and reflects new landowners and land parcels that have been subdivided.

We received queries on white marks (crosses) left on the grass following the survey, these were used to calibrate the drone against a ground point.

School Dam



Figure 2: School Dam looking down to Havelock North, with the dam crest (wall) and inlet pipe/ culvert in bottom of photo

Te Kahika Dam



Figure 3: Te Kahika Dam looking down into Havelock North, inlet pipe bottom middle, and spillway middle right of photo on right side of dam crest (wall)

Herehere Dam



Figure 4: Herehere Dam looking down into Havelock North, dam crest (wall) in middle of photo and stream channel running down middle of photo

Figure 5: Snippet of Herehere Topographical Survey



Mangarau Stream 2C area design stream walk

Engineers, surveyors, and planners have walked the Mangarau Stream within the 2C area over the last few weeks to capture further information to develop the design for stage one over the next two months.

The designs will progress access locations for future maintenance and undertake stream channel conveyance upgrades in the stage 1 area, as well as enable future construction and maintenance into the streams aligned with [Tonkin & Taylor optioneering](#), known as Stage 2, from the private bridge downstream.

We are expecting to have some construction underway before the end of the year and we remain on track to have completed Stage 1 works by April 2025.



TE KAUNIHERA Ā-ROHE O HERETAUNGA
HASTINGS DISTRICT COUNCIL

207 Lyndon Road East, Hastings 4122 | Private Bag 9002, Hastings 4156
06 871 5000 | customerservice@hdc.govt.nz | hastingsdc.govt.nz

Copyright © Hastings District Council, All rights reserved.

Our mailing address is: customerservice@hdc.govt.nz

Want to change how you receive these emails?
You can [update your preferences](#) or [unsubscribe from this list](#)