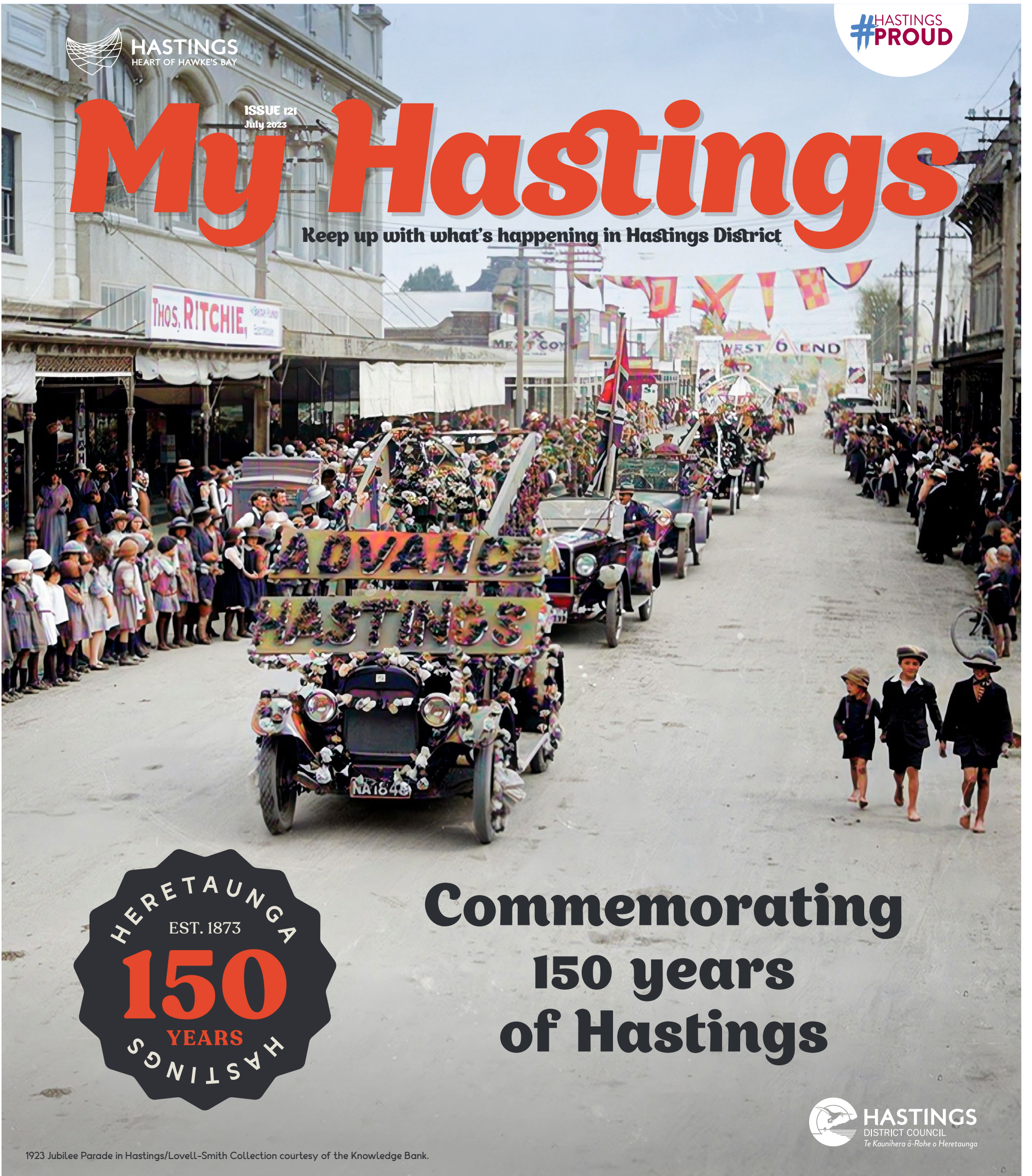


ISSUE 121  
July 2023

# My Hastings

Keep up with what's happening in Hastings District



## Commemorating 150 years of Hastings

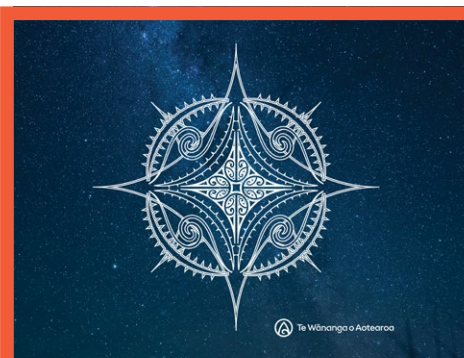
1923 Jubilee Parade in Hastings/LoveLL-Smith Collection courtesy of the Knowledge Bank.



VIBRANT CITY CENTRE



COMEDY AT TOITOI



MATARIKI



BUILDING BRIDGES



## Message from the Mayor

The past month has continued to be a huge challenge for people impacted by Cyclone Gabrielle as they get more clarity on the future of their flood-damaged land and properties.

Community meetings, either led by the community or Council, are being held to gather feedback from residents in flood-affected areas about the provisional land categorisations.

To assist further, 11 connectors have been brought in to help individuals and whānau navigate the complexities of the land categorisation process and outcomes, work through council's regulatory processes, and connect them to Central Government agency support.

The connectors are trained in community liaison, welfare, and emergency response, and are available to work one-on-one with residents, walking alongside them to help them move forward with their recovery.

Wet weather in recent weeks has not been helpful, but we are still making good progress restoring access across the district, and looking forward to Redclyffe Bridge being reinstated by the end of this month.

This will make it a much quicker journey for Puketapu residents who, with the destruction of the Puketapu bridge, have had to face long detours.

We're also very proud of the work being done to clean up the more than one million cubic metres of silt being tackled by the Silt Recovery Taskforce.

Most of the contractors involved are local and knowing they are making a big dent in the clean-up recovery makes a real difference.

While we acknowledge the difficulties many are facing, and the long road ahead, there are some exciting events coming up to brighten the winter months and look forward to.

This year we will be celebrating the 150th anniversary of the founding of Hastings township. I'm looking forward to the many activities on offer, hearing people's stories, and celebrating the resilience our community has shown over these years, and all those who have contributed to creating the wonderful Hastings we are so proud of.

We will also be celebrating Matariki with a range of events over four days. There's something for all the whānau and I hope you get the opportunity to take part in some or all of them.



Kia kaha  
Sandra Hazlehurst  
Mayor of Hastings

## Bridge building continues post-cyclone

### Council's roading teams and contractors continue to make steady progress restoring access over waterways where multiple bridges were destroyed by ex-Cyclone Gabrielle.

To date bailey or temporary crossings have been installed at Rissington, Dartmoor, Ellis-Wallace, Arapaonui, Matapiro, Moeangiangi, Mangatutu and Whanawhana.

As of last month, a temporary ford had been put in place at Matapiro, and work had begun on repairing Crownthorpe Bridge, which was expected to be complete by the beginning of this month.

All of these solutions have been designed to create access as soon as possible with the same level of service retained, but some of the bridges may be subject to weight and speed limits and, as with the rural roading network as a whole, remain vulnerable to further weather events.

As such, council is asking that their use be limited as much as possible to residents and essential services only.

Meanwhile, Council continues working towards restoring the other access points.

At Waiohiki, engagement has been taking place with the local and wider community regarding the reinstatement of the Redclyffe Bridge.

Deconstruction of the existing bridge began last month and it's estimated that a temporary replacement will be ready for use by the end of July.

The installation of this bridge will help reduce travel times for the Puketapu community who have had to endure a lengthy detour since the Puketapu Bridge was destroyed.

Due to the river being 122 metres wide, a bailey bridge is not suitable as a temporary replacement for the Puketapu Bridge.

Options for a temporary light traffic bridge (with access for pedestrians, cyclists, and passenger vehicles) were discounted due to the complexity, cost, and it being anticipated it could take nine to 12 months to build.

Pedestrian-only access is also not possible due to the cost and lengthy time to install.

There will be community consultation (dates to be confirmed) and consideration will be given to constructing a two-lane bridge with a cycle/pedestrian lane.

It is hoped, dependent on funding, that construction of a bridge here could be completed over 18 months.

Council is currently considering options for the Brookfields Bridge, including the possibility of a two-lane bridge with cycle lane.

Depending on how the Government's recovery funding will be structured, the district's bridge projects may need to be prioritised.



The Mangatutu bailey bridge was opened to traffic on June 15, restoring a vital transport link for the rural community of Waihou. PHOTO/FULTON HOGAN

## City centre revitalisation recognised with award win

### Described as "the very essence of successful placemaking", the 10-year regeneration of Hastings city's East Block, including the Toitō Municipal Building restoration project, earned a top award at this year's Taituarā Excellence Awards.

The awards are an annual showcase of excellence within the local government sector, and 43 entries from councils across the country were submitted this year.

The Beca Award for Placemaking recognised the restoration of the Hawke's Bay Opera House and Municipal Building – linked to the goals of the 2013 Hastings City Centre Strategy and the projects identified in the 2019 Hastings City Centre Revitalisation Plan.

This included strengthening the city centre's identity, creating quality open spaces and connections, and creating more vibrancy and activity within the area – with the focus in the first five years of the Revitalisation Plan on the Eastern precinct of the city.

Community consultation was a priority throughout, including with business partners, contractors, mana whenua and the arts, tourism and hospitality sectors.

This engagement was noted by the judges who said it was: "a significant project of scale that has retained the heritage building and provided a catalyst for further regeneration. The project built on a community connection to place and brought in mana whenua and local identities within the performing arts to further contribute to place memory. This is the very essence of successful placemaking."

The community has been instrumental to the success of the revitalisation efforts to date, and feedback will be sought in coming weeks to help inform the next 10 years of this strategy.

Read more about what's been achieved and what's coming up on the following pages.







Matariki is the Māori tradition that marks the rising of the star cluster Matariki Pleiades. Matariki signals the start of the Māori New Year and is a time of commemorating the passing of loved ones, making plans for the upcoming year, feasting, celebrating and giving thanks for the harvest.

In Hawke's Bay Matariki celebrations began in June, and will continue this month - including the Matariki public holiday on July 14.

#### He Waka Maimai Aroha - Vessel of Affection

**When:** Thursday, July 6, 5.30pm-9pm

**Where:** The Pond, Flaxmere Park, Swansea Rd

Write a message of remembrance, reflection and gratitude on a lantern and then float it in the waters of the pond and reflect on this special occasion. (Lanterns are biodegradable, one free lantern per family). Live music and kai trucks on site.

**FREE**

#### Matariki Digital Light Show

**When:** Thursday, July 13 - Saturday, July 15, 6pm-10pm

**Where:** Civic Square, Eastbourne St, Hastings

Wrap up warm and come along to Civic Square to watch the digital light and sound show that brings the stars of Matariki to life.

**FREE**

#### Hākari Matariki - Celebrate Matariki Hastings

**When:** Friday, July 14, 6pm-9pm

**Where:** Tōmoana Showgrounds, Kenilworth Rd, Hastings

Dress up warm to re-energise the soul and warm the senses in the chill of winter at the second public holiday to celebrate Matariki. Enjoy a live entertainment showcase of singers, bands, kapa haka, pasifika dance, fashion, remembrance and pahū ahi - fireworks for a spectacular finale. Kai trucks onsite.

**FREE**

#### Matariki Pūrākau - Storytelling around the fire

**When:** Saturday, July 15, 6pm-9pm

**Where:** Civic Square, Eastbourne St, Hastings

Join the circle around communal fires as storytellers ignite our imaginations and illuminate our minds as they did for our forebears. Whānau will share the history of Ngā Pou o Heretaunga as they bring to life the 18 large pou carvings representing an ancestor from each marae around Hastings district. Kai trucks onsite.

**FREE**



National comedians hit Toitoti stages this month

Winter is warming up at Toitoti this month, with the annual comedy festival, Laugh Your A\*\* Off, bringing three days of laughs and mayhem from July 27 to 29 - and every ticket is just \$30 or less.

Headlined by national treasure and television regular, Justine Smith (Best Foods Comedy Gala, The Project, 7 Days, Taskmaster NZ), the festival blends stand-up with burlesque, circo-arts, collective comedy singing and improv, to ensure there's something for all palates.

Smith, who has won so many national comedy awards she's running out of fingers to count them on, will headline the festival with her new show, Actually I'm A Cat Person. She describes the show as "a departure from my everyday stand-up, but there's plenty of that, too."

"The show is about what makes me, me. I talk about being adopted and how I am like both my two very different mothers! I was encouraged to tell this story onstage by everyone I've told it to - it's the story behind my actual adoption process, my great family, including my sister and my grandad who both have their places in my show", she says.

When asked if she herself has cat or dog-like traits, her response is telling: "I'm not sure if humans are even good enough to have animal traits! If I had to though, I'd choose to live a cat's life - just snacks and naps, man."

While she's been a professional comedian for decades, it's still important to Smith to keep things fresh on stage, inspired no doubt by the comedians she herself looks up to.

"I always make sure I am having a great time too, as well as the audience, hopefully. I think in any performance, if it looks like fun, that's going to be contagious.

"Robin Williams is (was) my favourite comedian. His Live At the Met hour is mind-blowing."

So, if you're a fan of comedy, cats, dogs, Justine or Robin, book yourself an escapist night out full of laughs at Toitoti on Saturday, July 29.



Your full laugh schedule:

#### Thursday 27 July

**Laugh Your A\*\* Off - The Gala, 7pm (R16+)**

Hosted by Justine Smith, the Gala presents the best of the fest - with comedy, music, burlesque, circus, magic, mind-reading and more.

#### Friday 28 July

**Stand-up Allstars, 7pm (R16+)**

Enjoy a night of all-star comedians, which will make your sides, belly and face ache! Hosted by Kiwi favourite Chris Parker, with headliner Cori Gonzalez-Macuer, supported by Gabby Anderson and Courtney Dawson.

#### Friday 28 and Saturday 29 July

**Stories About My Body, 7.30pm (R16+)**

Let Morgana O'Reilly regale you with storytelling meets stand-up meets spoken word - tales of selling toes, diary entries from '98, boobs, birth, and double chins.

**Late Night Cabaret, 8.45pm (R18+)**

An evening of sexy, funny, and high energy entertainment, showcasing extravagant cabaret, circus and burlesque performances.

#### Saturday 29 July

**Beginners' Improv Workshops, 10am & 2pm (R18+)**

Join internationally trained improviser and teacher Emma Bowyer in the most fun and friendly environment to learn improv.

**Fresh Faces, 5pm (R18+)**

Hawke's Bay Comedy presents the Bay's best upcoming and semi-pro comedians. MC'd by Hastings-Karen Leslie and Lil Sarah, you'll see all the rising stars of the local comedy scene.

**Battle Chorus, 5.30pm (R16+)**

With the guidance of musical heavyweights, Jason Te Mete and Rutene Spooner, audiences form two groups, grab a drink, learn some iconic choruses, and then battle it out in an epic medley of songs, a la Pitch Perfect.

**HASTINGS BLOSSOM FEST 2023**

**22-24 SEPTEMBER**

**SAVE THE DATE**

- + Hastings Blossom Parade
- + outdoor cinema
- + live performances
- + blossom breakfast
- + carnival rides
- + much more
- + ALL FREE!

hastingsblossomfest.co.nz

Justine Smith - Actually I'm a Cat Person, Saturday 29 July, 7pm at Toitoti. Tickets \$30 (+ fees). For more info and to buy tickets to all the Laugh Your A\*\* Off shows, see [www.toitovenues.co.nz](http://www.toitovenues.co.nz).



# Hastings City Centre – A collective vision coming to life

Hastings city centre has undergone a transformation over the past five years, and the vibrancy that's been injected over that time is set to continue over the next 10 years.

In 2013, council adopted the Hastings City Centre Strategy, setting out an aspirational 20-year plan for the district's business and commercial heart.

Significant public consultation was undertaken in the preparation of this strategy, and the main themes of the feedback were a desire to retain our sense of place, heritage character and amenity, establish more green open spaces, improve vibrancy, enhancing retail diversity, putting on events and activity, inner city centre accommodation, a compact city centre.

This has guided the activities that have since been

undertaken through the Hastings City Centre Revitalisation Plan.

The city's landlords and businesses have been on the journey as well, significantly investing in our city and creating the exciting buzz that is happening – including new bars, offices, eateries, and craft and homeware stores.

Ten years on from the release of the strategy, thoughts are now turning to what will happen over the next 10 years to further enhance the city centre, making it even more attractive and inviting to visit and spend time in.

## 2013-2023 – What's been achieved

### Streetscape upgrades

The Hastings City Revitalisation Programme began 10 years ago with the full streetscape upgrade of Heretaunga 200 and 300 West blocks, including snalights, trees planted, fully paved footpaths, limestone kerbs, outdoor dining areas and raised pedestrian crossings.

These street treatments have continued throughout the city centre now, including all of Heretaunga St East, and blocks of Eastbourne St, Karamu Rd, Railway Rd, and Queen St East.



### Toitōi – Hawke's Bay Arts and Events Centre precinct

The cornerstone of the revitalisation of the Eastern side of the city was the earthquake strengthening and redevelopment of the Hawke's Bay Opera House and Municipal Building.

The multi-million dollar, eight-year renovation project was completed in 2022 setting the tone for this part of the city and fulfilling the strategy goals of strengthening the city centre's identity; creating quality open spaces and connections; integrating and concentrating activity in the city centre; using precincts to provide opportunities; and reinforcing and

containing our city centre and generating civic pride.

Municipal Building tenants have been selected to complement what the buildings offer and bring people into the city centre. This includes the relocation of the Hastings iSite which is collaborating with local food and wine producers to offer tastings and sales.

Council's investment has also given private developers confidence to further invest in the eastern end of Hastings, while the cultural activities of Toitōi bring locals and visitors into the city centre, benefiting local businesses.

### Façade enhancement

Our long-running façade enhancement scheme, focused on our heritage buildings, has enabled owners of private buildings to refurbish their properties to a fine heritage standard; great examples are the many buildings in Queen Street. The old Post Office building, the old Public Trust and the old HB Herald Tribune building as well as many more. These beautiful buildings have been earthquake strengthened, refurbished and protected by our city landlords for the next 100 years.



### Laneways

At the end of 2018, a laneway located between two shops at 325 Heretaunga St West was opened. Fitted out with gardens and seating, it's an area that encourages people to relax, including time out for nearby workers. And with its bright mural and decorative elements it adds vibrancy to the city.

More recently a private developer has installed a laneway on Heretaunga St East running alongside Albert Square, giving access to businesses and creating a point of interest amongst the buildings.



### Pocket parks

#### Warren St multi-use carpark/ outdoor dining area

In 2020, an evening outdoor area was created in a council-owned carpark in Warren Street. A leased car park during the day, in the evenings and weekends it can be transformed into a bookable event space, backing onto the hospitality businesses along Heretaunga Street.

#### Landmarks Square

In 2021 this area, half of which used to be a car park, was extended to provide additional greenspace, including a permanent stage, seating, planting, new toilet facilities, lighting and a spectacular sculpture 'Prunus Awanui' by local artist Philipp Meier, representing a cherry blossom.

The aim was to create a space that reflected our community and the people we are in Heretaunga. It also plays host to a container that can be booked for pop up activations and events, as has been used recently by 'Sammies'.







## Inner city living

Enabling people to live in the city has been another aim of the strategy – providing much-needed housing without encroaching on the plains as well as generating life and activity in the city centre.

Last month, an independent hearing commissioner granted resource consent to demolish and redevelop the site at 206 Queen Street and 223 Heretaunga Street West.

Once home to the Hawke's Bay Farmers' Co-operative Association, and more recently Briscoes, the council-owned buildings have been vacant for some time, but now a whole new transformation is envisaged to breathe life into this area – creating quality apartment inner city living, extra carparks, a pedestrian laneway connecting to Heretaunga St, and a pocket park, with additional space for two commercial tenancies.

The residential component comprises six two-bedroom apartments and 14 one-bedroom apartments, each having a front and back external balcony and internal access from the ground floor entry lobby to the private car parks and the park side.

## Events and activations

Each year the city centre is brought to life with a range of events, installations, murals, performances, and public art – establishing it as a thriving hub of activity and culture that brings people together and reflects the rich heritage of the district.



## Public/private partnerships

Over the past 10 years council has facilitated partnerships, or upgraded streetscapes, to enhance the vitality and economic activity in the city centre.

In tandem with street upgrades, businesses and organisations are making the most of the benefits of being established in a city that's undergoing a transformation.

Some examples: Kiwibank call centre, The Tribune retail and office development, NZ Police headquarters, Rush Munro's in Albert Square, Heretaunga St East eateries and hospitality venues.



## What's next

**In the first 10 years, 21 of the 33 projects in the strategy have been completed.**

More streetscape upgrades are currently in planning for King St between Queen and Eastbourne Streets, and Market St.

Work is also currently underway for the enhancement of the Mall in Heretaunga Street West 100 block, including necessary upgrade works to the fountain, and Civic Square in the coming years.

New laneways are planned in the Heretaunga St East 100 block adjacent to the new H Central (former Breakers); and in Heretaunga St West 200.

In parallel, a number of council-facilitated or owned developments in and around the city centre will either be completed or starting in the next six months.

Those nearing completion include the Quest Hotel, Waiaroha water treatment, storage and

education facility, and Wesley Methodist Church Community Centre (opposite Toitōi on Hastings St).

Work is not far away from starting on the new Hawke's Bay Museum Research and Archive Centre at 307 Queen St East.

While good progress has been made there is still more to be achieved, and council is gathering public input to help set the priorities for the next 10 years.

In coming weeks a survey will be available asking for ideas on how we achieve a growing and dynamic city centre that has a strong identity, showcases the district's diversity, is well-connected and signposted for wayfinding, and is sustainable and well-designed.

Also under consideration will be matters such as transport and public transport options,

carparking, places for young people, incorporating Māori culture into all aspects of the strategy and how to encourage more inner city living.

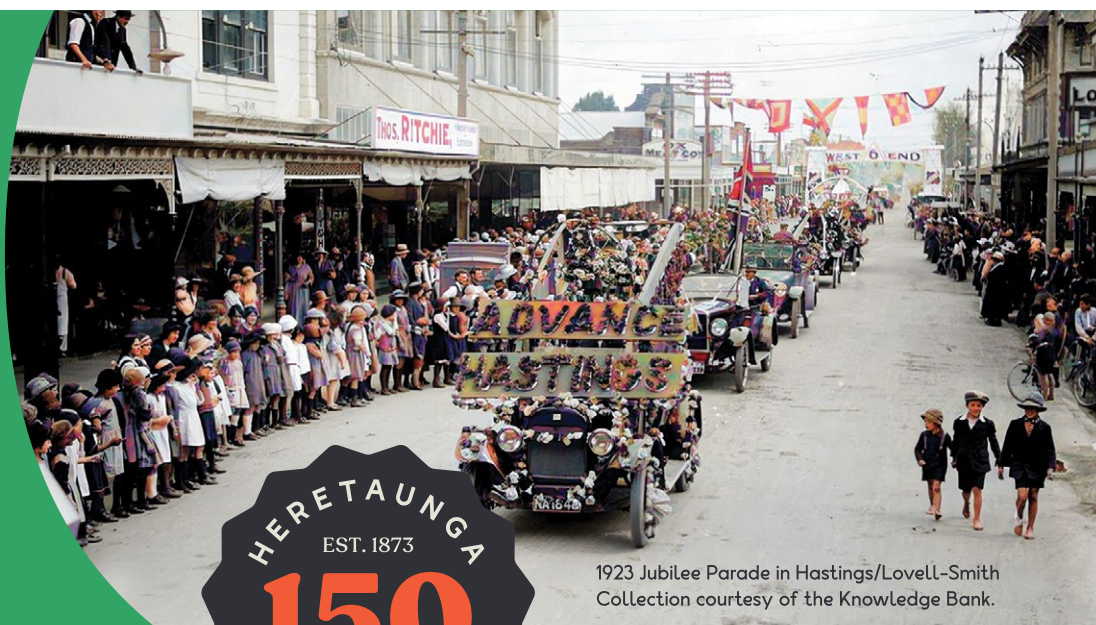
Keep an eye on the council website and FB page to have your say on the survey.





# Hastings 150th Weekend

July 2023 marks 150 years since the founding of the Hastings township. You're invited to commemorate this special occasion.



1923 Jubilee Parade in Hastings/Lovell-Smith Collection courtesy of the Knowledge Bank.



## WHAT'S ON

### FRIDAY 7 - SUNDAY 9 JULY

#### Hastings 1873

Brave Brewing, Cellar 495, Rosie O'Grady's, Hastings Gin Distillers, John's Bakery + more

Our township was founded in 1873, so to mark the occasion you're invited to try the tasty menu specials on offer from Hastings city hotspots for just **\$18.73**.

Dine out on a nostalgic nibble or bygone beverage to commemorate Hastings turning 150 years. See online for full details and opening hours.

#### Historical Lightshow

Toitoti-Hawke's Bay Arts and Events Centre exterior. 5:30pm-10:30pm

See Hastings' history come to life with this special historical image projection show brought to you by the team from Walk of Wonders.

**FREE**

### SATURDAY 8 JULY

#### 150th Commemoration Official Tree Planting Ceremony

Cornwall Park. 1pm

The 150th commemoration of Hastings township is being marked with an official tree planting and plaque reveal ceremony led by Mayor Sandra Hazlehurst and descendants of Francis Hicks who founded Hastings in 1873.

A time capsule full of letters from local schools will be buried during the ceremony, with students reading their letters.

**FREE**

#### Duart House Open Day

51 Duart Road, Havelock North. 10am-2pm

Protected under the Historic Places Act, Duart House was built in 1882 and is surrounded by three acres of garden. This is a lovely opportunity to view one of Hastings District's most iconic old homesteads. There will be volunteers onsite to help people self-guide the property, plus jams and plants for sale.

**FREE**

#### 150th Commemoration Ballroom Dance

Assembly Ballroom, Municipal Building, Toitoti. 7pm-9pm

Dance the night away to the sumptuous sounds of the talented Mandy and the Mood Swings, one of New Zealand's leading vintage swing bands.

Free entry with complimentary tea and coffee. Cash bar.

**FREE**

### SUNDAY 9 JULY

#### Civic Service, St Matthew's Anglican Church

200 King Street South, Hastings. 10am-11am

A service to recognise, honour, and give thanks for this significant occasion. All welcome.

**FREE**

#### The BIG 150th Family Day Out

Civic Square, Hastings. 11am-2pm

Bring the whole family along to Civic Square to mark Hastings' 150th year. Festivities include live music, dance performances, magic, crafts, games, face-painting, vintage vehicles, and a storytelling tent where you will hear stories of our past and present, including a live reading of "Pearl in a Whirl" from author Catherine Robertson. Food trucks onsite.

**FREE**

**HERETAUNGA  
HASTINGS**

[hastingsdc.govt.nz/150-years](https://hastingsdc.govt.nz/150-years)



# 2023 Hawke's Bay Art Guide released

Arts Inc. Heretaunga and Creative Arts Napier have launched this year's Hawke's Bay Art Guide to help people explore the region's vibrant creative community.

Locals and visitors alike are encouraged to visit the studios of well-established high-profile artists or emerging new talent, and take a self-guided walking tour of public artworks across the region.

"Our goal is to make art accessible to everyone in Hawke's Bay," says Arts Inc. Heretaunga community arts development manager Pitsch Leiser.

"We have worked with our partners Hastings District Council and Napier City Council to showcase public artworks in an easy-to-read format, to highlight the significance of art in public spaces and its role in embracing the artistic diversity of a local community."

This year, more than 30 new creatives and businesses have been included in the guide.

You can pick up your copy of the 2023 Hawke's Bay Art Guide from the Hastings Community Art Centre, Creative Arts Napier, i-Sites, the Hawke's Bay Airport, or local hospitality venues.

Visit [www.hawkesbayartguide.co.nz](http://www.hawkesbayartguide.co.nz) to view the guide online.



# Splash Planet Open Day

Are you or someone you know looking for a summer job this coming season?

On Saturday, July 8, Splash Planet is holding a recruitment open day for people to find out what roles will be available this summer.

It will also be a chance to meet the team, discover learning and training opportunities available, peek behind the scenes and take a look at some of the new equipment.

Go to [www.hastingsdc.govt.nz/careers](http://www.hastingsdc.govt.nz/careers) to find out more.



# Watch out for Moth Plant

Do you have a Moth Plant growing in your area? If you see this noxious weed, please take action.

Easy to spot, Moth Plant is incredibly invasive, smothering garden plants and native vegetation and killing butterflies and moths. The wind and water spread the seeds of this fast-growing

weed, and it can germinate almost anywhere. You'll see Moth Plants along coastlines, cliffs, tracks, bush, or in your garden at home. It lives in virtually any frost-free habitat. It has a white milky sap, which some people may be allergic to.



### What can you do to get rid of it on your property?

- Pull up seedlings all year round
- Cut and swab the stump with weed killer, removing all pods and burning or disposing of vegetative material (summer-autumn)
- Spray using an appropriate product (summer-autumn)

Check back regularly to ensure nothing re-sprouts.

For more information about how to control the plant, visit Hawke's Bay Regional Council's website: [www.hbrc.govt.nz/environment/pest-control/pest-hub](http://www.hbrc.govt.nz/environment/pest-control/pest-hub)

## Your local representatives



**SANDRA HAZLEHURST**  
MAYOR  
sandra.hazlehurst@hdc.govt.nz



**ANA APATU**  
TAKITIMU MĀORI WARD  
councillor.apatu@hdc.govt.nz



**MARCUS BUDDO**  
KAHURANAKI WARD  
councillor.buddo@hdc.govt.nz



**ALWYN CORBAN**  
HERETAUNGA WARD  
councillor.corban@hdc.govt.nz



**MALCOLM DIXON - HASTINGS-HAVELOCK NORTH WARD**  
councillor.dixon@hdc.govt.nz



**MICHAEL FOWLER - HASTINGS-HAVELOCK NORTH WARD**  
councillor.fowler@hdc.govt.nz



**DAMON HARVEY - HASTINGS-HAVELOCK NORTH WARD**  
councillor.harvey@hdc.govt.nz



**HENRY HEKE**  
FLAXMERE WARD  
councillor.heke@hdc.govt.nz



**KELLIE JESSUP**  
TAKITIMU MĀORI WARD  
councillor.jessup@hdc.govt.nz



**TANIA KERR**  
MOHAKA WARD  
councillor.kerr@hdc.govt.nz



**EILEEN LAWSON - HASTINGS-HAVELOCK NORTH WARD**  
councillor.lawson@hdc.govt.nz



**RENATA NEPE**  
TAKITIMU MĀORI WARD  
councillor.nepe@hdc.govt.nz



**SIMON NIXON - HASTINGS-HAVELOCK NORTH WARD**  
councillor.nixon@hdc.govt.nz



**ANN REDSTONE**  
HERETAUNGA WARD  
councillor.redstone@hdc.govt.nz



**WENDY SCHOLLUM - HASTINGS-HAVELOCK NORTH WARD**  
councillor.schollum@hdc.govt.nz



**KEVIN WATKINS - HASTINGS-HAVELOCK NORTH WARD**  
councillor.watkins@hdc.govt.nz



**ISABELLE CRAWSHAW**  
KAWEKA SUBDIVISION  
isabellec@hdc.govt.nz



**ABBY MORLEY**  
TUTIRA SUBDIVISION  
abbym@hdc.govt.nz



**VICKI SCOULAR**  
POUKAWA SUBDIVISION  
vickis@hdc.govt.nz



**JONATHAN STOCKLEY**  
MARAĒKĀHAO SUBDIVISION  
jonathans@hdc.govt.nz



# What's on... July 2023

## Arts Inc. Heretaunga

106 Russell Street South | FREE ENTRY  
artsinc.co.nz



### David Fine Scholarship Award Exhibition – Alex Heperi – Haututū

UNTIL 8 JULY



2023 David Fine Scholarship recipient Alex Heperi from Toimairangi, presents an exhibition in her distinctive and unique visual language, exploring themes of whakapapa and maramatanga.

### Matariki Exhibition – AROHA

10 – 22 JULY



This year's exhibition features artwork from students of Toimairangi, Te Wananga o Aotearoa and artists of the Iwi Toi Kahungunu Artist Collective acknowledging Matariki as a time to remember those who have passed on.

### Rangahau Māori Research Centre, EIT|Te Pūkenga – Auaka Tumutumu Te Kura i Awarua

24 JULY – 5 AUGUST



Celebrating the Treasures of Awarua' – Te Kura i Awarua showcase Ngāti Kahungunu taonga, Te Ūranga Waka, IDEASchool & Toihoukura contemporary art exhibitions while hosting archive and restoration wānanga.

## Hastings Sports Centre

503 Railway Road | P. (06) 878 0051  
hastingsdc.govt.nz/hsc



### Open Gym

MONDAY, TUESDAY, WEDNESDAY | 12.30PM – 2.30PM  
\$3 per person per session.

### Tumbling Tots

26 JULY  
9.30AM – 10.15AM SKILL BASED SESSION  
10.30AM – 11.30AM FREE PLAY SESSION  
\$5 per child per session.

### Hastings Kiwi Seniors

EVERY TUESDAY | 9.30AM – 10.30AM  
\$5 per session.

### Tai Chi for Beginners

EVERY THURSDAY | 1PM – 1.45PM



## Camberley Community Centre

703 Kiwi Street, Camberley | FREE ENTRY  
hastingsdc.govt.nz/camberley-community-centre



### Kaupapa Tuitui – Adult Sewing Classes for all abilities

TUESDAYS | 10AM – 12PM  
Please bring a plate for morning tea.



### Sit and Be Fit

TUESDAYS | 1PM – 1.45PM



A seated exercise programme suitable for older adults to assist with building balance and strength.

### Kori Tīnana Mo Ngā Kaumatua Programme

FRIDAYS | 9AM – 10AM



Group exercise for fitness, wellbeing and social contact specifically tailored for our over 50's.

### Line Dancing

MONDAYS | 11AM – 11.45AM



### Nourished for Nil

MONDAYS | 3PM – 4PM



## Flaxmere Community Centre

30 Swansea Road, Flaxmere | FREE ENTRY  
hastingsdc.govt.nz/flaxmere-community-centre



### Explode

EVERY MONDAY, WEDNESDAY & FRIDAY  
6AM – 6.45AM & 10AM – 10.45AM

Strength & conditioning  
\$2 per person per session

### Tai Chi

MONDAY | 9AM – 9.45AM

Slow gentle meditative movements and controlled breathing



### Badminton for Seniors

MONDAY & FRIDAY | 11AM – 12.30PM



### Strength & Balance for Seniors

TUESDAY & THURSDAY | 11AM – 12PM



Low impact aerobics

### Revamp

TUESDAY & THURSDAY | 4.45PM – 6PM



Strength & conditioning

### Line Dancing

WEDNESDAY | 10AM – 10.45AM



### Level Up

WEDNESDAY | 4.45PM – 6PM



High intense step class

### Sit Fit for Seniors

FRIDAY | 10AM – 10.45AM



Low impact exercises done while seated

## Hastings District Libraries

FLAXMERE LIBRARY – Swansea Road  
HAVELOCK NORTH LIBRARY – Te Mata Road  
HASTINGS LIBRARY – Cnr Eastbourne and Warren Streets  
hastingslibraries.co.nz



### Matariki DIY Centrepiece Workshop

11 JULY | 5.30PM – 7.30PM

FLAXMERE LIBRARY



Set the scene for sharing stories! Come along for an evening of simple weaving, crafting, and hot soup as you create a table centre to take home for your Matariki celebrations. This activity is specifically on offer to older adults.

### Landmarks History Talk – Ryan Hambleton, Chief Executive, Regional Sports Park

11 JULY | 5.30PM | KOHA ENTRY

HASTINGS WAR MEMORIAL LIBRARY



Join Ryan as he talks about the phenomenal evolution of the Regional Sports Park from an inner-city athletic park to a destination serving all ages.

### Matariki Evening Stories

13 JULY | 5.30PM – 6.30PM

REGISTRATION REQUIRED  
FLAXMERE LIBRARY



Nau mai haere mai whānau, to Flaxmere Community Centre for an evening of Matariki storytelling, warm kai, and a hot drink. Registration required. Suitable for all ages.

### Discover a StoryWalk® this winter!

3 – 16 JULY

FRIMLEY PARK



Explore the StoryWalk® on your own or read along together with whānau while combining the benefits of walking and the fun of reading. Stories will change during the two weeks for park and story lovers to discover.

## FREE EVENTS

### Hastings City Art Gallery

201 Eastbourne Street East, Hastings | FREE ENTRY  
P. (06) 871 5095 or E. hastingsartgallery@hdc.govt.nz  
hastingscityartgallery.co.nz



### No Straight Lines: Evan Woodruffe

UNTIL 16 JULY



Escape into Evan Woodruffe's large-scale painterly environments. The luscious surfaces and abstract landscapes he creates burst from the wall with bright colours and lively shapes, which will leave your senses charged.

### Design Kahungunu: Iwi Toi Kahungunu

UNTIL 20 AUGUST



Iwi Toi Kahungunu returns for their fourth exhibition at Te Whare Toi o Heretaunga this year. The exhibition will offer an insight into Kahungunu culture and the artists' evolving practices.

### Art for Tots

3 JULY | 10.30 – 11.30AM | KOHA ENTRY

Art for Tots runs on the first Rāhina (first Monday of each month). A fun art experience for under-fives.

### Kids Drop-in Art Days

4, 6, 11 & 13 JULY | 10AM-3PM



Come along and get creative with fun, free art activities related to our current exhibitions!

## Toitōi - Hawke's Bay Arts & Events Centre

101 Hastings Street South  
P. (06) 871 5289 or E. info@toitovenues.co.nz



Please refer to the Toitōi website for information on upcoming programmes and events: [toitovenues.co.nz](http://toitovenues.co.nz). Tickets can be purchased at the Hastings or Havelock North sites or at [toitovenues.co.nz](http://toitovenues.co.nz).

### Mitch James – The Long Road Home Tour

8 JULY | 8.30PM

See the singer-songwriter who toured the world with Six60, opened for Ed Sheeran, and who'll be on the road with his first global tour this winter, it's Tāmaki Makarau's Mitch James! Tickets from \$59.90.

### Bic Runga – Beautiful Collision Tour

15 JULY | 8PM

If you want to celebrate this Ngāti Kahungunu silver scroll royalty for Matariki, go and get your tickets to see Bic Runga's Beautiful Collision tour, which celebrates the album's 20th anniversary. Tickets from \$77.40.

### Laugh Your A\*\* Off

27 – 29 JULY

Toitōi is amped to bring you Laugh Your A\*\* Off – Hawke's Bay's Cheeky Comedy Festival at the end of July. With 11 shows, there's something for all senses of humour – from your fave TV faces to burlesque, theatre and improv, all tickets are \$30 or under. It's guaranteed to be your funniest winter weekend yet!

## Events & Activities

### Hawke's Bay Farmers Market

EVERY SUNDAY | 8.30AM – 12.30AM

WAIKOKO GARDENS, TŌMOANA SHOWGROUNDS

[www.hawkesbayfarmersmarket.co.nz](http://www.hawkesbayfarmersmarket.co.nz)



### Dr Lucy Hone, Director of the NZ Institute of Wellbeing & Resilience

13 JULY | 12.30PM – 2PM | REGISTRATION REQUIRED

TOITOI – FUNCTIONS ON HASTINGS

Hosted by David Todd, Toddy Talks, this 'fireside chat' will offer some genuinely helpful insights to help people and organisations create practical resilience strategies. Light lunch provided. Book your seat today at [eventfinda.com](http://eventfinda.com).



### Special Days this month

3 JULY | Asalha Puja (Dhamma Day)

9 JULY | Eid al-Adha begins

14 JULY | Matariki

14 JULY | Bastille Day

18 JULY | Hijri – Islamic New Year

Get My Hastings delivered directly to your inbox [www.hastingsdc.govt.nz/myhastings](http://www.hastingsdc.govt.nz/myhastings)



HASTINGS DISTRICT COUNCIL

207 Lyndon Road East, Hastings 4122 | Private Bag 9002, Hastings 4156 | P 06 871 5000 | E [customerservice@hdc.govt.nz](mailto:customerservice@hdc.govt.nz) | [www.hastingsdc.govt.nz](http://www.hastingsdc.govt.nz)  
TE KAUNIHERA Ā-ROHE O HERETAUNGA