

ISSUE 120  
June 2023

# My Hastings

Keep up with what's happening in Hastings District

## Flaxmere Park wins again!



Te Pae  
Whāira o Pā  
Harakeke

### Flaxmere Skate Park

The cultural design for Te Pae Whāira was completed by mana whenua artists from the Iwi Toi Kahungunu Artists Collective. For Te Pae Whāira, the collective interpreted a design brief completed by Te Waka o Māramatanga Kāhui Ako Rangatahi, school children from Pā Harakeke Flaxmere, Bridge Pa, Pakipaki and Waimārama.

The land beneath Te Pae Whāira o Pā Harakeke was once the point where the braided river Ngaruroro Mokotuararo ki Rangitira formed a singular channel as it flowed across the Heretaunga plains to the sea. The harakeke that thrived along its banks inspired the two names the area is known by: Pā Harakeke and Flaxmere.

Throughout the 1800s flooding shifted the course of the rivers across this area, leaving behind the shingle plain on which Flaxmere was built. The whakapapa genealogy of this natural change is reflected in the design of the surfaces and structures of Te Pae Whāira, while the landscaping pays homage to harakeke.

Three designs are interwoven on the paving, representing a whāriki woven mat:

- Pātiki Flounder symbolises manaakitanga, abundance and hospitality, welcoming people into the space.
- Kaokoā Chevron represents interlocked arms, welcoming manuhiri visitors with its haka stance serving as a cautionary sign.
- Takitoru links back to the way traditional sails were woven in a takitahi pattern, representing open communication.

The waharoa and poupou gateway is inspired by a strand of harakeke. The simplistic and overstated design of the waharoa and poupou is a contemporary approach to a traditional gateway. The corten steel, which will weather to a rust-like colour, adds to the industrial feel of the skate plaza, while the backlit panels bring vibrancy and colour. The waharoa and poupou both incorporate designs of a kaitiaki using the Pitu-a-Mania kōwhiriwhiri form, while

the swirling pattern represent the currents of the Ngaruroro and the healing winds of the Heretaunga plains. The incorporation of skate elements celebrates the use of the site today.

The ramp walls reflect the Mangokoru kōwhiriwhiri blasted into the concrete ramp walls. Mangokoru is a design specific to Kahungunu, developed by artists of the Iwi Toi Kahungunu collective. Incorporating the Mangokoru within Te Pae Whāira celebrates our local Kahungunu identity. The three oxidised concrete colours on the skateable areas represent the three strands of the Ngaruroro.



CYCLONE UPDATE

Karanema  
Havelock North

NEW ROAD SIGNS

Matariki

MATARIKI

COMMUNITY SPACE OPENS

## Message from the Mayor

It's more than three months since Cyclone Gabrielle hit and we continue to be focused on the district's recovery.

In May the Cyclone Recovery Minister set a timeline for assessments of properties affected by Cyclone Gabrielle, and those in the lowest-risk areas will start to get some clarity about their future this month.

We welcome this process getting underway, and hearing that those in higher-risk areas will also start to be engaged with in early June.

Our residents need certainty and are wanting answers, but it's important that this process is conducted thoroughly and provides the right answers.

More funding to help residents is being allocated from the Hawke's Bay Disaster Relief Fund, with the owners of red and yellow stickered homes in Hastings set to receive \$2000 per property.

There is more information on the Council website, but if Council holds the property owner's bank details, the refund will be automatic. Our team has been contacting those we don't, to get those details.

I was extremely pleased in this year's budget to see a \$6b investment in the reinstatement of critical local and national infrastructure announced – we are looking into the allocation details, but it is certainly very good news.

Also announced was \$65m to fund community connectors to assist with the recovery of our most cyclone-affected residents. This is something we, along with other impacted councils, requested and will be so important as we work with our residents on how they plan for the future.

I wish to acknowledge and thank the amazing volunteers who continue to support those who have been impacted by the cyclone.

As well as responding to our community's needs post-cyclone our Council has been getting on with other business as usual, including committing to investing in upgrades to our beloved Splash Planet.

We know the opening of Splash Planet is a much anticipated event each summer and we want to make sure it is a fabulous experience.

Although we acknowledge the cost burdens we are experiencing as a result of Cyclone Gabrielle, this attraction is very important to our people and our district, and Council is committed to upgrading the facility.

By getting started with these improvements now we have the best chance of re-opening in the middle of November.



Kia kaha  
Sandra Hazlehurst  
Mayor of Hastings

## Save the date

### Hastings 150-year commemoration

This July we will be commemorating 150 years since the founding of Hastings with a number of events for all the community to enjoy. More details will be available in the lead-up to the main weekend of July 7-9. Keep an eye on [hastingsdc.govt.nz/150-years/](https://hastingsdc.govt.nz/150-years/) for more information.

## Hastings council to invest in Splash Planet

### Splash Planet is to undergo significant upgrades and equipment replacements ahead of opening for summer in mid-November this year.

Hawke's Bay's most popular tourist attraction, the facility was created from what had once been the dry-ride theme park Fantasyland, operated by a trust.

Falling into decline, Fantasyland was rebranded as Splash Planet and opened in 1998 after significant investment to convert it to its present theme. Splash Planet came to Council from trust governance in 2004, and since that time has been managed, funded and governed by Council.

Regular appraisals are carried out, and most recently a number of works and improvements have been identified that will enhance the experience – including replacing the go-karts and bumper boats with new ones, upgrading the grounds and playground equipment, improving the wastewater system and the building, electrical and plumbing assets.



The projected cost of the upgrades is \$2.4m, a proportion of which would come from existing operational and capital budgets set aside for the facility, and the rest from loan funding to avoid putting the costs on ratepayers.

The area behind the main water features will be closed off and the new jeeps and other amusement devices in that area relocated to the front of the park to ensure they are able to be used by visitors.

The kayak facility will also be closed, and this whole area assessed with the potential to be reopened as a public space at some point in the future.

The ticket price will go up by \$4 to \$6 to help deliver this improved offering.

The go-karts will be replaced with electric options, electric outboard motors installed in the bumper boats, and the kitchen/café facility and equipment would be upgraded.

## My Walk in Wardrobe returns to Tōmoana Showgrounds

### After a record-breaking event in Hastings last year, My Walk in Wardrobe is back at Tōmoana Showgrounds this month with another showcase of sustainable fashion.

Last year My Walk in Wardrobe attracted 1200 shoppers who spent \$32,000 on sustainable fashion at 39 stalls, and owner and founder Katy Pakinga is thrilled to be coming back to Hastings.

"We love having markets here as we always get so much variety at our stalls and love seeing so many sustainable shoppers on the day, usually making a day of it with friends. The vibe is always friendly and warm, even though the weather might not be."



She said she expected to again attract around 40 stalls offering preloved, vintage, upcycled or handmade (by the seller) clothing, shoes, jewellery and fashion accessories – ranging from kids to adults, with an increasing amount of men's and plus-size items on offer.

"It's estimated around 180,000 tonnes of clothing and textile waste is dumped in New Zealand landfills every year, so the more we can recirculate, and the less we dump, the better."

The event is taking place at the Exhibition Hall on June 10, 10am to 2pm – gold coin entry.

Residents interested in thrifting can find more information about the upcoming event and My Walk in Wardrobe at [www.mywalkinwardrobe.co.nz/](http://www.mywalkinwardrobe.co.nz/)

## Events lining up for Matariki

### Ātea a Rangi, Waitangi Regional Park will again be hosting a galaxy of events to celebrate the Māori New Year this month.

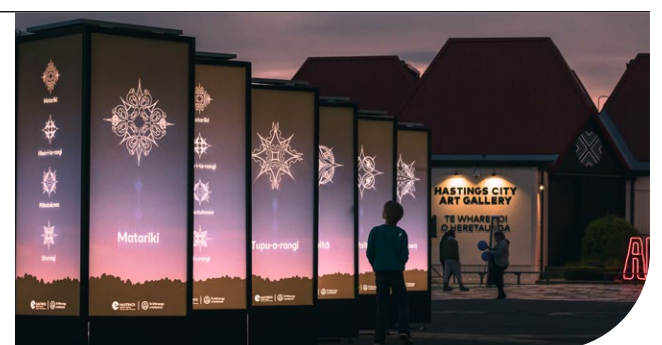
The annual event run by Ātea a Rangi Trust explores how the stars of Matariki connect with the taiao/ environment and features a range of free educational, cultural and environmental activities aimed at school children.

This school and community week will run from June 19 to 23.

There will also be a Whānau Marama Light Show with entertainment, and education and korero about Ātea and stars of Matariki from 6pm to 9pm from June 20 to July 14.

On June 23 Te Takanga o te Rā o Takurua/ Winter Solstice – Matariki Hautapu – will be held at 5am.

While the national public holiday is on July 14, in Hawke's Bay Ngati Kahungunu have seen Matariki



rising around 15 June every year, so runs its programme a bit earlier.

The Matariki public holiday dates are set to acknowledge that different Iwi that live in different areas of Aotearoa and see Matariki/Punga at different times by a couple of days or weeks.

More information about these events can be found at [www.atea.nz/](http://www.atea.nz/)

#### More Matariki celebrations in July:

**Matariki Tāpuapua at The Pond in Flaxmere Park** – July 6, 6pm to 9pm

**Whakanuia a Matariki Hākari at Tōmoana Showgrounds** – July 14, 6pm to 9pm

**Matariki Pūrākau at Civic Square** – July 15, 6pm to 9pm.



## Refurbished Cornwall Park Tea Kiosk re-opened as community space

On May 18, the community joined councillors and other invited guests to officially open the Cornwall Park community building, formally the tea kiosk.

The historic building and its associated band rotunda was first opened in 1929, and over the past two years has undergone earthquake strengthening and internal refurbishment to return it to a space for the wider community to use.

New playground equipment has also been added to the space in front of the building, chosen with a focus on providing opportunities for play for those with disabilities.

And it features Hawke's Bay's first Changing Places bathroom for people with multiple or complex disabilities where they can get changed in a safe and clean environment. It includes toilet, showering and changing facilities.

Hastings mayor Sandra Hazlehurst said the renovation was prompted by feedback through the Cornwall Park Reserve Management Plan consultation process, when there was overwhelming support to return the building to its former community use.



"We are thrilled to follow the wishes of the community, and return one of our city's signature historic buildings back to its original purpose.

"I would like to acknowledge the guardianship of this building by Hastings playcentre over the past 50 odd years; and I'm excited to support them in the building of their new facility in St Leonards Park."

Disability Resource Centre service manager Karen Elliott said the new developments – particularly the new bathroom situated right next to the playground was "amazing."

"I'm really impressed – everything has been thought about in the bathroom, from low hand-dryers to privacy screens."

Park and playground user Paula Barron was also enthusiastic.

"I think it's a really fancy building – I'm so thankful to the community for helping out with the things we need."

Council worked with various user groups to develop the playground that includes new musical, spinning, rocking and swinging play options all of which can be accessed directly by wheelchairs.

## New directional road signs to include te reo Māori

Hastings District Council is replacing more than 20 large, blue, road direction signs across the city centre that have become faded and hard to read, and at the same time is taking the opportunity to include te reo Māori place names.

The main focus is on the CBD ring road (Maraekākaho Road/Pakowhai Road, St Aubyn Street, Hastings Street and Southampton Street). A couple of signs on the main roundabout into Havelock North will also be replaced.

The replacements will address the poor condition of the signs that have been particularly affected by sun exposure over time.

The use of te reo Māori along with the English words is an expression of Council's Heretaunga Ararau Te Reo Māori Action Plan.

The plan was launched in 2020 to celebrate the language, with the aim of Hastings being a te reo Māori city by 2040.

Initiatives such as the directional road signs were a start and council would continue



exploring and adopting more te reo Māori place and space names around the district.

Hastings mayor Sandra Hazlehurst said it was important to recognise the status of te reo Māori as a taonga of iwi Māori and to celebrate and support the revitalisation of the language in Hastings.

"Being familiar with te reo Māori, along with mana whenua aspirations, values and cultural customs helps us to acknowledge our unique cultural heritage and identity, and build stronger, more equitable communities."

The implementation of the Heretaunga Ararau

Te Reo Māori Action Plan is guided by a memorandum of understanding with Ngāti Kahungunu Iwi Incorporated.

Ngāti Kahungunu chair Bayden Barber welcomed the introduction of te reo Māori on the new signs.

"It's very important for our Ngāti Kahungunu identity, our tikanga. They talk about place and our connections to that place and we are happy seeing that being recognised in this way."

The new signs will not only be easier to read, they will provide consistency for wayfinding around the Hastings CBD.



# Cyclone recovery funding support helps those helping others

**In the wake of Cyclone Gabrielle many communities have been left devastated – their roads broken, their houses destroyed, their livelihoods in jeopardy.**

The Hastings Mayoral Relief Fund was established through donations and, now almost fully allocated, \$158,000 distributed to those in need, or helping their communities to recover.

The Whanganui community generously contributed \$50,000 towards this fund, which was also bolstered by a large sum from a generous local family.

Here is a snapshot of the kind of activities the funding went towards.

## **Puketapu School Parent League - \$6000**

The Puketapu School Parent League was set up many years ago to fundraise for the school and surrounding rural community.

This group is using the Mayoral Relief Funding for trauma counselling for a community feeling overwhelmed and disconnected.

This counselling will help to restore the health and mental wellbeing of the people of Puketapu and surrounding rural areas.

The counselling will be undertaken by experts in the field, and will benefit not only individuals but also their wider families, their work colleagues, school mates etc.

## **HB Clean up crew - \$10,000**

Throughout the response the HB Clean Up Crew have been on the ground and helping property owners with anything from clearing silt to taking off gib and water blasting.

Volunteer crews have been working all day, six days a week – many from other parts of the country.

Mayoral Relief Funding was provided to help with the costs of two diggers and three trucks, fuel for the machinery and for volunteers to get around.

For those impacted the mental toll is enormous and this support has been gratefully received.



Waiohiki Arts Village.



## **Waiohiki Arts Village - \$10,000**

Waiohiki Creative Arts Village was devastated by Cyclone Gabrielle – flooded and filled with silt, with buildings damaged and materials lost.

The village artists have been offering “time out” art classes for people affected by the flooding – utilising the benefits of art therapy, but they were hampered from having no venue or materials.

The Mayoral Relief Funding was put towards buying replacement materials for these artists.

## **Meal Drive Hawke’s Bay - \$5000**

Many groups in the community, even as far away as Auckland, have been cooking meals throughout the response and the funding received will go towards supporting meals to continue being made and distributed over winter.

Meal Drive Hawke’s Bay has been coordinating these meals (including those supplied through Gattungs Catering in Auckland and The Collective Hug from Hawke’s Bay).

They have also been distributing the meals to the hardest hit areas. For people who have been isolated this has been a way to help relieve some of the stress, and the funding will help keep this support going.

## **One Voice Community Services Trust - \$4000**

The One Voice Community Services Trust has been co-ordinating meals for those displaced from their homes, and supporting impacted residents and clean-up volunteers with petrol, New World and Mitre-10 vouchers.

The trust allocated some of its Mayoral Relief Funding to Neela Neela who has been providing more than 1000 meals a day for affected residents in the most highly impacted areas. It also assisted with cleaning up silt in Esk Valley.

A lot of people are feeling overwhelmed by the size of the task ahead of them, and have been humbled and grateful for the assistance provided.



Meal Drive, Hawke's Bay.

*Apple & Peach  
Crumble*  
*made with ♥ in our  
kitchen, sending  
love from Auckland*



## Small Hall Sessions - \$9000

The organisers of the popular Small Hall Sessions, which bring musicians to small rural halls across Hawke's Bay received Mayoral Relief Funding to support a series of performances through the month of May.

This included nine in Hastings, in communities affected by the Cyclone. The aim was to offer some music, fun and laughter to assist with health and wellbeing.

Most importantly these sessions were a chance for people to take a break and get out and make contact with friends and neighbours.



## Raft compensation - \$5000

The Dartmoor community was cut off from the rest of the district due to a bridge being destroyed.

A local family provided a raft as a lifeline for supplies to be brought to the community, and as time went on for people to get to work and visit family.

It was used for fuel, food, and community events, but with the silt build up in the river, combined with reducing water levels, the raft was damaged.

Mayoral Relief Funding was allocated to provide compensation for all this community effort, which has supported the overall emergency response, and meant a new raft could be bought.

## Merson Contractors - \$4500

Based in Puketapu, Merson Contractors had machinery buried and company tools, uniforms, equipment, phones and computers all washed away in the cyclone floods.

This funding has been helping them replace these items as well as water blasters and trailers.

They have also had to dig machinery out of silt and clean out and re-clad sheds, while using a caravan as a temporary office.

This funding gives a bit of light at the end of the tunnel - any extra makes a big difference.



## Nightsong - \$6000

Funds were allocated to provide free buses for school students in affected areas to go to the free performance of The Worm at Toitoti on April 28. Arts and culture are a powerful tool for recovery and this was an opportunity to bring community together, with the focus on young people who often get overlooked.

The free transport meant there was no extra burden on parents to support or provide transport, or on teachers to organise.

**There are still funding opportunities available to those impacted by the cyclone.**

Go to [www.hastingsdc.govt.nz/cyclone-gabrielle/financial-support/](http://www.hastingsdc.govt.nz/cyclone-gabrielle/financial-support/) for more options.

## NEW ZEALAND DISASTER FUND

The New Zealand Disaster Fund helps us support communities to respond to, recover from, and prepare for disasters and emergencies in Aotearoa New Zealand. One hundred percent of all donations, including interest earned, will be used to support affected communities.

### EXAMPLES OF SUPPORTING COMMUNITIES

*Grants from the New Zealand Disaster Fund have helped support:*

#### **HAWKE'S BAY DISASTER RELIEF TRUST \$1,000,000**

The primary focus of the Trust is to support individuals and community groups experiencing hardship and loss.

#### **HASTINGS DISTRICT COUNCIL \$339,000**

This equips two Civil Defence Centres to shelter up to 600 people during emergencies.

#### **PUKETAPU SCHOOL PARENT LEAGUE \$100,000**

Helping families to get back on their feet - clothing, furniture, appliances and financial assistance for utility bills and food.

#### **ESK VALLEY COMMUNITY HUB \$94,870**

Temporary accommodation such as caravans, to enable residents to stay at their properties.

#### **ONE VOICE COMMUNITY SERVICES TRUST \$50,000**

Support volunteers and community hubs with clean up supplies - clothing, bedding, petrol, clean up gear and food.

### FIND OUT MORE

We are distributing funds to organisations and community groups who can make an impact supporting affected communities.

Find out more and stay informed at [redcross.org.nz/nz-disaster-fund](http://redcross.org.nz/nz-disaster-fund).

*Donations to the New Zealand Disaster Fund have not been used to produce this update.*

[REDCROSS.ORG.NZ/NZ-DISASTER-FUND](http://REDCROSS.ORG.NZ/NZ-DISASTER-FUND)



## PHASE TWO

# Hawke's Bay DISASTER RELIEF TRUST

## What is the Disaster Relief Fund ?

*The Emergency Relief Fund provides financial support to residents and ratepayers of the Hawke's Bay region who have been affected by Cyclone Gabrielle. This hardship grant provides for damage or hardship incurred as a result of the cyclone.*

Since February 2023, this fund has helped Hawke's Bay communities, individuals, families, community organisations and marae to get immediate access to funds to assist with recovery.

Since 27 February 2023, the Hawke's Bay Disaster Relief Trust has paid out over \$2 million to 3500 applicants. From Monday 8 May 2023, Phase two criteria will apply. This will allow our most impacted to apply when they have incurred or are facing significant personal cost, not covered by any other funding. Evidence such as receipts, photographs or quotes for future work will need to be provided for assessment prior to approval.

**Use this QR code to access the online form or go to [hbrc.info/HBDisasterFund](http://hbrc.info/HBDisasterFund)**

## How will the disaster fund be used?

### The fund will mainly be used for:

- Dealing with septic tank overflows and filling water tanks.
- Clearing debris from properties including waste, silt or any items that need clearing in relation to Cyclone status.
- Significant costs incurred on your property not covered by any other grants or income.
- Replacement of articles that cannot be insured by people - for example; fences, footpaths, etc.



# New building a space to educate about waste

**A new building at Ōmarunui Landfill is to act as an education space for people to learn more about what happens to our waste, as well as other waste minimisation information.**

Led by Hastings District Council's waste minimisation team – the site was blessed in January and construction has begun.

Although they stopped during the Covid-19 pandemic, tours have been run at the landfill over the years but were often challenged by bad weather, and there was no space to have quality conversations and answer questions raised.

The new building aims to completely change the experience of visiting the landfill.

Council's senior waste minimisation officer Samantha

Gibbons has played a huge part in the project and is excited to see it coming to life.

She said the most impactful thing you can do is to take someone to the landfill to be confronted with their waste and the waste of the community.

"To see it be pushed into the ground and face the grim reality that we are filling the earth with it. Although many people feel reassured to see that the landfill is well managed, it is clear that this is not the ideal solution for our growing waste problem.

"People who have been on tours have spoken of how eye opening the experience was to see just how much waste we produce."

The new building won't just be limited to tours. Council plans on using it for events and educational workshops through the waste minimisation team, and community initiatives.

One of the waste minimisation team initiatives is the building itself, which is being constructed from recovered building material by Atkins Construction who aim to have it finished by October this year.



## Flat glass recovery at Heretaunga House a first for Hawke's Bay

**Deconstruction of Heretaunga House in central Hastings has begun inside the building, and in a region-first the flat glass from the process will be recycled by specialists 5R.**

Hawke's Bay regional demolition and construction waste minimisation advisor Geoff Gibson, who supports both Hastings District and Napier City Councils, is on a mission to reduce the amount of building and construction waste going to landfill.

One of the first projects he's got his teeth into is the deconstruction of Heretaunga House, which is being taken down as it does not comply with national building standards and is deemed earthquake prone and not safe to occupy.

Throughout the process the project team is trying to recycle and re-purpose almost everything they can.

"We're aiming to recover 99 per cent of the flat glass and 90-95 per cent of all the building materials," Mr. Gibson said.

Hastings District Council has formed a partnership with 5R who are going to take all of the glass from the likes of the windows and doors to their recovery facility in Auckland.

Mr Gibson said the recycling of the flat glass was believed to be a first for Hawke's Bay, and that it was great to have an alternative to sending the material to the Ōmarunui Landfill.

5R's managing director Chris Grant said he was thrilled to be able to work in partnership with contractors McMahon Services New Zealand and Hastings District Council to introduce the region to glass recovery on such a large scale as with this project.

"This is exactly what we need to be doing every time we work in the deconstruction space – put waste minimisation front of mind. We don't need to send this waste to landfill.

"While people might pull a window out of a home renovation and take it to a second-hand shop for re-use in another space, recycling flat glass is completely different."

The process involves removing the individual glass panels from the building, loading them onto a transport truck and taking them to the facility in Auckland, where the glass is processed into a new reusable product.

It is estimated a minimum of 200 tonnes of glass will be removed from Heretaunga House and re-purposed into items such as glass wool insulation and new glass jars and bottles.

Other materials lined up for recycling back into the community include heat pumps, interior doors carpet tiles, kitchens and bathroom fittings.

Anyone looking for advice on waste minimisation in the construction and demolition space can contact Mr Gibson via the Napier or Hastings council websites.



HB regional demolition and construction waste minimisation advisor Geoff Gibson, left and 5R managing director Chris Grant outside Heretaunga House before deconstruction began.

## Plastic items banned from July 2023

**Does your business use plastic produce bags, plastic straws or plastic plates, bowls or cutlery?**

The Government is phasing out certain hard-to-recycle plastics, and six single-use items.

Plastic products to be phased out on 1 July 2023 are single-use:

- Plastic produce bags
- Plastic plates, bowls and cutlery
- Plastic straws\*

The use of plastic produce labels will start to change. From 1 July 2023, labels on domestically grown produce intended for the New Zealand market must have a label that is more compostable. Industry is working towards developing a fully home compostable label by mid-2025.

\*Supermarkets, pharmacies, hospitality businesses and health and disability services will still be able to provide plastic straws on request to people with a disability or health condition.

Please be aware of these changes, and take appropriate steps to stop using them in your business.

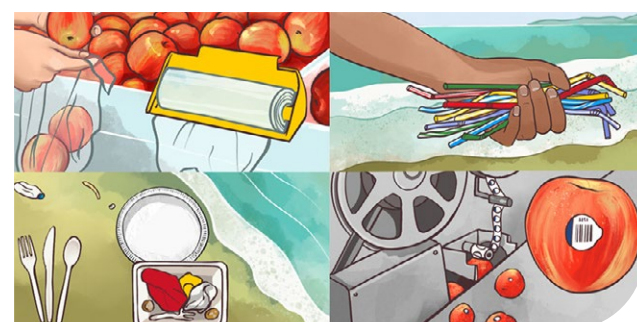
For information about what to do as a seller/user of phased out items, see: [environment.govt.nz/publications/plastic-products-banned-from-october-2022/#steps-to-take-if-you-currently-sell-or-manufacture-a-banned-product](https://environment.govt.nz/publications/plastic-products-banned-from-october-2022/#steps-to-take-if-you-currently-sell-or-manufacture-a-banned-product)

If you're unsure about what to do, contact the Ministry for the Environment via [info@mfe.govt.nz](mailto:info@mfe.govt.nz).

For more information see:

- Plastic products banned from July 2023
- Plastic and related products amendment regulations 2022

Don't forget that some plastic products were phased out in October 2022. For a reminder, see here: [environment.govt.nz/publications/plastic-products-banned-from-october-2022](https://environment.govt.nz/publications/plastic-products-banned-from-october-2022)





## Second award win for Flaxmere Park

**Flaxmere Park has done it again – winning Recreation Aotearoa's Most Active Park Award 2023.**

Building on the mahi that saw Flaxmere first win the award in 2020, the submission focused on the addition of more active play elements and the community input that made them happen.

"Adding to the vast range of activities... it now also boasts a top-of-the line full-size basketball court, a volleyball court, community supplied and maintained boxing bag, and the largest (and arguably the best) skate park in the district," the submission said.

"It has been a logistical challenge fitting everything the community desires on the park while still leaving heaps of room for picnics, free play and events – but it works!"

It also canvassed, in depth, the strong community consultation that underpinned the design of the new skate park, and the 'look and feel' of the art work that makes it different from any other skate facility in the country. As well as being closely involved in the skate elements, youth in particular had a very strong wish that the facility 'looks like us'.

To fulfil that desire, and on the advice of respected members of the Flaxmere community, Council contracted artist collective Iwi Toi Kahungunu to develop the young people's ideas and complete the artwork.

Flaxmere councillor Henry Heke said the award recognised the huge efforts put in by the community and Council teams, to make Flaxmere Park "a fantastic facility for all of Flaxmere and the wider district. I'm really looking forward to celebrating this with the community".

Mayor Sandra Hazlehurst said winning the award for a second time, reflected the ongoing partnership between community and Council, and the achievements that come from that close relationship.

"I'm very proud of everyone involved – at Council we have a very big focus on making our recreational facilities in Flaxmere the best they can be, especially as we increase the number of homes and therefore families moving into Paharakeke."

## Your local representatives



**SANDRA HAZLEHURST**  
MAYOR  
sandra.hazlehurst@hdc.govt.nz



**ANA APATU**  
TAKITIMU MĀORI WARD  
councillor.apatu@hdc.govt.nz



**MARCUS BUDDO**  
KAHURANAKI WARD  
councillor.buddo@hdc.govt.nz



**ALWYN CORBAN**  
HERETAUNGA WARD  
councillor.corban@hdc.govt.nz



**MALCOLM DIXON – HASTINGS-HAVELOCK NORTH WARD**  
councillor.dixon@hdc.govt.nz



**MICHAEL FOWLER – HASTINGS-HAVELOCK NORTH WARD**  
councillor.fowler@hdc.govt.nz



**DAMON HARVEY – HASTINGS-HAVELOCK NORTH WARD**  
councillor.harvey@hdc.govt.nz



**HENRY HEKE**  
FLAXMERE WARD  
councillor.heke@hdc.govt.nz



**KELLIE JESSUP**  
TAKITIMU MĀORI WARD  
councillor.jessup@hdc.govt.nz



**TANIA KERR**  
MOHAKA WARD  
councillor.kerr@hdc.govt.nz



**EILEEN LAWSON – HASTINGS-HAVELOCK NORTH WARD**  
councillor.lawson@hdc.govt.nz



**RENATA NEPE**  
TAKITIMU MĀORI WARD  
councillor.nepe@hdc.govt.nz



**SIMON NIXON – HASTINGS-HAVELOCK NORTH WARD**  
councillor.nixon@hdc.govt.nz



**ANN REDSTONE**  
HERETAUNGA WARD  
councillor.redstone@hdc.govt.nz



**WENDY SCHOLLUM – HASTINGS-HAVELOCK NORTH WARD**  
councillor.schollum@hdc.govt.nz



**KEVIN WATKINS – HASTINGS-HAVELOCK NORTH WARD**  
councillor.watkins@hdc.govt.nz



**ISABELLE CRAWSHAW**  
KAWEKA SUBDIVISION  
isabellec@hdc.govt.nz



**ABBY MORLEY**  
TUTIRA SUBDIVISION  
abbym@hdc.govt.nz



**VICKI SCOULAR**  
POUKAWA SUBDIVISION  
vickis@hdc.govt.nz



**JONATHAN STOCKLEY**  
MARAEKĀKAHO SUBDIVISION  
jonathans@hdc.govt.nz

## RUSTY THE DOG



### REGISTER YOUR DOG NOW.

GET THEIR YELLOW TAG BY REGISTERING THEM BEFORE 1 JULY 2023

Save time, do it online: [hastingsdc.govt.nz/dog-registration](https://hastingsdc.govt.nz/dog-registration)

Don't forget to tell us if anything has changed!



Remember, not everyone loves your dog as much as you do; please walk it on a lead.

# What's on... June 2023

## Hastings District Libraries

FLAXMERE LIBRARY – Swansea Road  
HAVELOCK NORTH LIBRARY – Te Mata Road  
HASTINGS LIBRARY – Cnr Eastbourne and Warren Streets  
[www.hastingslibraries.co.nz](http://www.hastingslibraries.co.nz)



### PRIDE 2023

1 – 17 JUNE

HASTINGS, FLAXMERE & HAVELOCK NORTH LIBRARIES

A celebration of the LGBT+, Takatāpui and MVPFAFF+ communities across all three libraries, with a variety of events aimed at various age groups.



### Landmarks History Talk

12 JUNE | 5.30PM

HASTINGS WAR MEMORIAL LIBRARY  
GOLD COIN DONATION

Join speaker Chris Collins, former CEO Eastern Institute of Technology (EIT) talk about the expanded campuses serving thousands of students.

### Turn up the Heat Adult Reading Challenge

6 JUNE – 23 JULY

ONLINE | REGISTRATION REQUIRED

Complete one or more of the challenges we have lined up for you and be in to win! The more challenges you complete, the more chances you have to win a prize.



## Hastings City Art Gallery

201 Eastbourne Street East, Hastings | FREE ENTRY  
P. (06) 871 5095 or E. [hastingsartgallery@hdc.govt.nz](mailto:hastingsartgallery@hdc.govt.nz)  
[www.hastingscityartgallery.co.nz](http://www.hastingscityartgallery.co.nz)



### No Straight Lines: Evan Woodruffe

UNTIL 16 JULY

Escape into Evan Woodruffe's large-scale painterly environments. The luscious surfaces and abstract landscapes he creates burst from the wall with bright colours and lively shapes, which will leave your senses charged.



### Design Kahungunu: Iwi Toi Kahungunu

UNTIL 20 AUGUST

Iwi Toi Kahungunu returns for their fourth exhibition at Te Whare Toi o Heretaunga this year. The exhibition will offer an insight into Kahungunu culture and the artists' evolving practices.



## Heretaunga Women's Centre

Women's Rest Building,  
Cnr. Russell & Eastbourne Streets  
[www.heretaungawomenscentre.nz](http://www.heretaungawomenscentre.nz)

Please register to attend any of the workshops by calling 06 878 5401 or email [admin@hwc.nz](mailto:admin@hwc.nz)

### Creative Card Making Workshop

13 JUNE | 11AM – 1PM

If you enjoy card making using and exploring a variety of materials and letting your ideas evolve and develop in your unique way, then this workshop may be for you: we will look at layering materials in card making, using tissue, ribbon, various coloured and textured cards.



### Weeds & Their Wonderful Uses

14 JUNE | 12PM – 1PM

This will be a practical, hands-on workshop where you learn more about weeds and their wonderful uses. You will take home many new ideas, recipe inspiration.



## Arts Inc. Heretaunga

106 Russell Street South | FREE ENTRY  
P. (06) 878 9447 or E. [info@artsinc.co.nz](mailto:info@artsinc.co.nz)  
[www.artsinc.co.nz](http://www.artsinc.co.nz)



## Hastings Sports Centre

503 Railway Road  
P. (06) 878 0051  
[www.hastingsdc.govt.nz/hsc](http://www.hastingsdc.govt.nz/hsc)

### Open Gym

MONDAY, TUESDAY, WEDNESDAY AND FRIDAY

12.30PM – 2.30PM

\$3 per person per session.

### Tumbling Tots

EVERY WEDNESDAY

9.30AM – 10.15AM SKILL BASED SESSION

10.30AM – 11.30AM FREE PLAY SESSION

\$5 per child per session.

### Hastings Kiwi Seniors

EVERY TUESDAY | 9.30AM – 10.30AM

\$5 per session.

### Tai Chi for Beginners

EVERY THURSDAY | 1PM – 1.45PM



## Camberley Community Centre

703 Kiwi Street, Camberley | FREE ENTRY  
[www.hastingsdc.govt.nz/camberley-community-centre](http://www.hastingsdc.govt.nz/camberley-community-centre)



### Kaupapa Tuitui – Adult Sewing Classes for all abilities

TUESDAYS | 10AM – 12PM

Please bring a plate for morning tea.



### Sit and Be Fit

TUESDAYS | 1PM – 1.45PM

A seated exercise programme suitable for older adults to assist with building balance and strength.



### Kori Tīnana Mo Ngā Kaumatua Programme (Group Exercise Programme)

FRIDAYS | 9AM – 10AM

Group exercise for fitness, wellbeing and social contact specifically tailored for our over 50's.



### Line Dancing

MONDAYS | 11AM – 11.45AM



### Nourished for Nil

MONDAYS | 3PM – 4PM



## Events & Activities

### Hawke's Bay Farmers Market

EVERY SUNDAY | 8.30AM – 12.30PM

WAIKOKO GARDENS, TŌMOANA SHOWGROUNDS

[www.hawkesbayfarmersmarket.co.nz](http://www.hawkesbayfarmersmarket.co.nz)



### Hastings Paint & Wine Night – Water Lilies – Monet inspired

14 JUNE | 6PM – 8PM

GIANT BREWING – 6 TREACHERS LANE, HAVELOCK NTH

The concept is simple – take a brush in one hand, a drink in the other and let's paint a masterpiece! Join us for a creative night of drinking and painting in the heart of Hastings! No previous painting experience necessary. Get your creative juices flowing and your brush strokes going!

### Special Days this month

1 JUNE | Samoa Independence Day

4 JUNE | Tonga Independence Day

5 JUNE | King's Birthday

## FREE FREE EVENTS

## Flaxmere Community Centre/Flaxrock Gym

30 Swansea Road, Flaxmere | FREE ENTRY  
[www.hastingsdc.govt.nz/flaxmere-community-centre](http://www.hastingsdc.govt.nz/flaxmere-community-centre)

### Explode

EVERY MONDAY, WEDNESDAY & FRIDAY

6AM – 6.45AM & 10AM – 10.45AM

\$2 per person per session.

### Tai Chi

MONDAYS | 9AM – 9.45AM



### Badminton for Seniors

MONDAY & FRIDAY | 11AM – 12.30PM



### Strength & Balance for Seniors

TUESDAY & THURSDAY | 11AM – 12PM



### Revamp

TUESDAY & THURSDAY | 4.45PM – 6PM



### Line Dancing

WEDNESDAYS | 10AM – 10.45AM



### Line Dancing

WEDNESDAYS | 4.45PM – 6PM



### Sit Fit for Seniors

FRIDAY | 10AM – 10.45AM



## Toitōi - Hawke's Bay Arts & Events Centre

**toitōi**  
Hawke's Bay Arts & Events Centre

101 Hastings Street South  
P. (06) 871 5289 or E. [info@toitovenues.co.nz](mailto:info@toitovenues.co.nz)

Please refer to the Toitōi website for information on upcoming programmes and events: [www.toitovenues.co.nz](http://www.toitovenues.co.nz)

### Massive Theatre Company Foundations Workshop

9 – 11 JUNE | 10AM – 4PM

REGISTRATION REQUIRED

This three-day, free workshop for rangatahi aged 14-25 years old will teach students how to make exciting performance pieces using their own stories and ideas. Register to take part at the Hastings site or at [toitovenues.co.nz](http://toitovenues.co.nz).



### Wine Options 2023

10 JUNE | 7PM

Love wine? Love a fun night out? Love supporting a good cause? Join us for our annual Wine Options event! Tickets \$289.50 for a team of four and includes: a bottle of wine, a sharing platter and 7 mystery tasting wines.

### Te Wao Tapu Nui & the Flight of Scotty

13 JUNE | 10.30AM & 6PM

14 JUNE | 6PM

Te Wao Tapu Nui & the Flight of Scotty is an original story written and directed by Sean Boston. Follow Scotty's journey through Frimley Primary School as he meets various characters who come to life from the schools Pou, Te Wao Tapu Nui. Tickets \$10.24.

### Napier Port Primary Sector Awards

29 JUNE | 6PM

The Napier Port Primary Sector Awards will take a new form for 2023, as nominations have been transferred to the 2024 event. This will be a chance to show continued support to the Primary Sector Industry, and for everyone to reconnect. Tickets \$105.

Get My Hastings delivered directly to your inbox [www.hastingsdc.govt.nz/myhastings](http://www.hastingsdc.govt.nz/myhastings)