

Pāharakeke, kua tae te wā! It's Flaxmere's time!

From new housing developments to the announcement of a new supermarket and ongoing upgrades and recreational additions to the local parks, activity in Flaxmere is at an all-time high.

First developed in the 1970s, the suburb of Pāharakeke is on the up, with the community working hard alongside Council to realise the full potential of the place and its people.

These are just some of the initiatives that council is supporting, alongside many other exciting community projects and achievements across recreation, education, health and culture.

Homes for our people

Last month, work began in earnest removing trees at Caernarvon Drive and 244 Flaxmere Ave as part of preparations to clear the sites for housing development – the latest step in Council’s plan to provide more than 150 new homes in Flaxmere.



In July 2020, work started on preparing the first of four lots of council land for housing at Tarbet Street. Here first-home buyers have snapped up 17 sections, and a private company is well advanced on building an additional 18 public houses on this land.

The new owners had to agree to using brick, tile and aluminium joinery (meaning they will be warm and weather-tight), and to minimum garaging and outdoor areas.

These conditions will also apply to the next three areas being developed - behind the Flaxmere Village Shops (about 40 homes), on Caernarvon Drive (about 60 homes), and at 244 Flaxmere Avenue (about 45 homes).

Council is installing the infrastructure (roads and pipes) for all these developments – the work supported by funding from Central Government.



At 244 Flaxmere Ave, the site will be ready for homes to be built at the end of this year, at the town centre by mid-2023 and at Caernarvon Drive at the end of 2023.

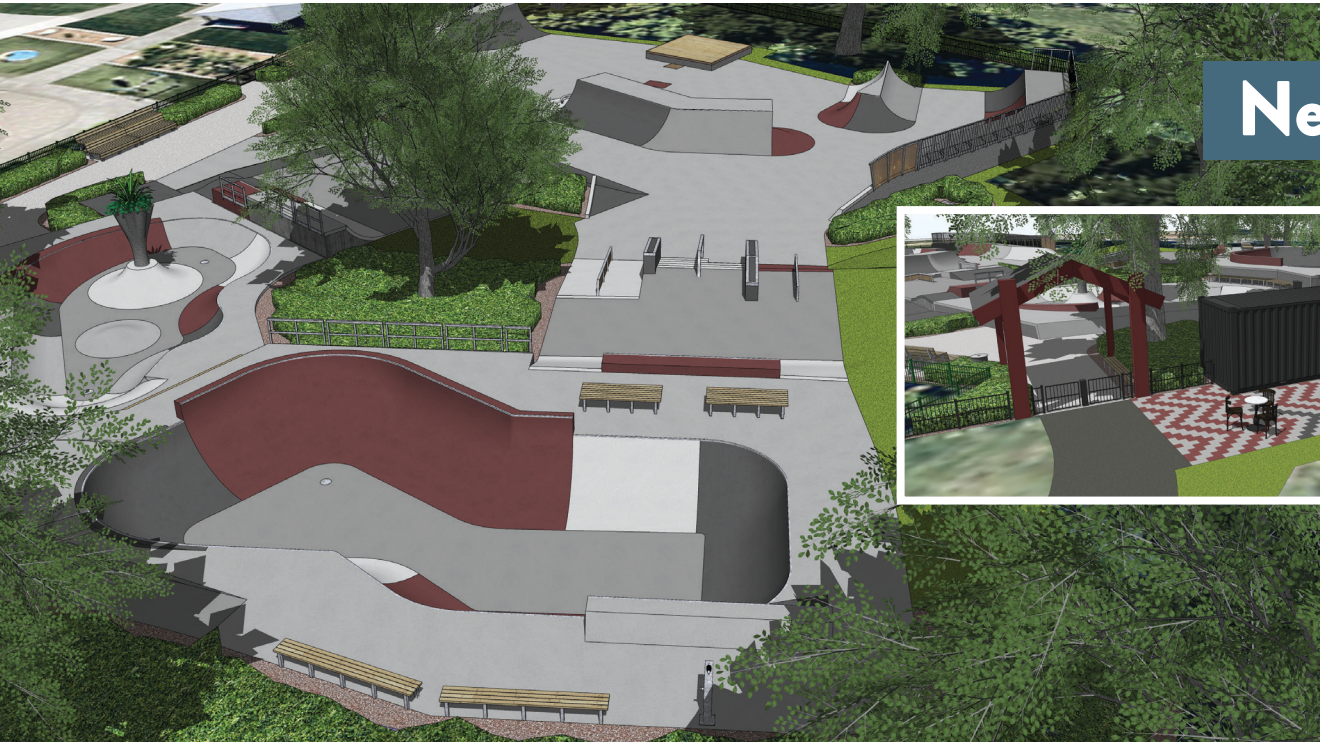
Alongside council’s work, Te Taiwhenua o Heretaunga and its sister company Waingākau Housing Developments Ltd is also well underway building 120 homes in Flaxmere West.

This development will be a mix of co-housing and conventional housing from 1 to 4 bedrooms. It is offering multiple pathways into home ownership and quality homes.

Keep up to date with progress at www.hastingsdc.govt.nz/flaxmere/flaxmere-homes



Flaxmere Park is currently home to a temporary pump track. It will be in Flaxmere until mid-March after which it will be moved to another location that's yet to be confirmed.



New skate plaza

With the residential development taking place at the Flaxmere Town Centre, the current skate facility behind the shops is being moved to a new location.

Not only will it have a new home at Flaxmere Park on the corner of Henderson Rd and Swansea Rd, it will be bigger and better, bringing it into line with other new skate plazas in urban areas across Hastings.

The plaza has been a true community project, with input on the design and location gathered from more than 200 skateboarders, scooterers, school students, parents and Flaxmere residents.

The design was finalised at the end of last year, with the plaza to be laid out over 1375 square metres, comprising almost everything the skaters and scooterers wanted, including quarter pipes, ledges, rails, stairs, ramps, kerbs and bowls - more than 20 elements.

There will also be a kiosk with outdoor seating area, as well as seating in and around the plaza. The existing trees, which are all being retained, will provide shade.

Construction is expected to start mid-2022, after working drawings are completed and a contractor is appointed.

Check here for the 3D drawings and fly-through and ongoing updates www.hastingsdc.govt.nz/hastings/projects/flaxmere-skate-plaza/



Hoops in Parks

On December 6, the second of two new basketball courts in Flaxmere was opened as part of the Hoops in Parks initiative – a partnership between Council, Basketball New Zealand, Basketball Hawke’s Bay and Sport Hawke’s Bay.

The first court was opened at Ron Giorgi Park III in June last year, and the second, with a vibrant purple synthetic turf has been installed at Flaxmere Park.

The Flaxmere Park court was supported with funding from Eastern and Central Community Trust.

They are part of the programme that’s a trial for a national roll-out of courts, aimed at making basketball facilities more accessible to communities.

The community celebrated both openings with Tall Black basketball legends and representatives from Council and the other agencies.

With the increasing popularity of basketball in Flaxmere and other areas the new courts, along with a full-size court at Te Kura o Kimi Ora, which is also open to the community, means almost every home in Flaxmere is within a 10-minute walk of a new full-size basketball court.

Find out more about the programme at www.hastingsdc.govt.nz/hastings/projects/hoops-in-parks/

Flaxmere Park management internationally recognised



Flaxmere Park is home to one of Hastings’ premier playgrounds. It also has sports fields, marked for football in the winter and cricket in the summer, a large number of mature shade-giving trees, and a pond.

Last month it was announced that the Flaxmere Park, along with the other premier parks at Havelock North Village Green and Cornwall Park, had retained its prestigious international Green Flag status for the third year running.

The awards recognise parks and reserves across the world that provide high quality and innovative recreational experiences for their communities.

In addition to this, Flaxmere Park was named New Zealand’s Active Park of the Year in the 2020 New Zealand Parks Awards, run by Recreation Aotearoa. In 2021, it was named a finalist in the same category of these awards.

Go to www.hastingsdc.govt.nz/hastings/reserves/flaxmere-park to find out more about the park.

New Flaxmere Community Plan progress

Over the past few months council has been gathering feedback from the Flaxmere community about what they want to see happen in the area over the next few years.

It’s part of preparing the new three-year Flaxmere Community Plan – a set of aspirations/actions that council assists the community with putting together.

This will be the fourth community plan for Flaxmere, and the previous versions have seen some great initiatives, such as the upgrade of Flaxmere Park, including the playground with splash

pad, the stage, ki-o-rahi and disc golf, an upgrade of the community centre, the introduction of community patrols, and a whole heap of community programmes.

From October to December last year, council sought input from the community to help inform the new Community Plan.

This included online surveys and promotional videos, surveys, and focus group discussions.

About 200 people gave feedback, which will be taken back to the community for further discussion.

Ideas received so far in terms of what could be improved in Flaxmere included the village and shops, housing, safety and policing, road and traffic calming, more splashpads, and more community activities.

In terms of what people would like to see happening in the parks, ideas included more fitness equipment and children’s play equipment, more community events, public toilets, a flying fox and sensory gardens.

The most recent version of the plan can be found at www.hastingsdc.govt.nz/flaxplan2016



New supermarket announced



After being on the community’s wish list for years, a new New World supermarket and retail shops is to be built in Flaxmere, anticipated to be up and running by mid-2024.

Over the past year, Foodstuffs North Island and Council had been negotiating over the sale of a vacant one hectare commercially-zoned lot behind the village shops, which followed 10 years of council engaging with the community and testing the market with potential supermarket operators.

The next generation New World store will be built to last with sustainability in mind. Alongside the latest natural gas CO2 refrigeration and LED lighting – the store design will make the best use of natural light and have low energy fixtures and fittings, including low embodied energy glass (meaning all processes in its production use as little energy as possible) being used throughout.

At 1900 square metres, the brand new New World will be larger than the nearby existing store, which is currently leased from third-party landlords. The new store will provide employment and career opportunities for up to 80 locals including experts in fresh foods, produce, butchery, bakery, seafood and deli.