

- Medium Density Residential
- Character Residential
- General Residential
- Central Commercial
- Residential Commercial
- Light Industrial
- Open Space

## Plan Change 5 – Medium Density Residential Zone



**HASTINGS**  
DISTRICT COUNCIL  
*Te Kaunihera ā-Rohe o Heretaunga*

Map Produced using ArcGIS Pro



Scale 1:3,000

0 12.5 25 50 75 100 125 Metres

Projection: NZTM  
Datum: D\_NZGD\_2000

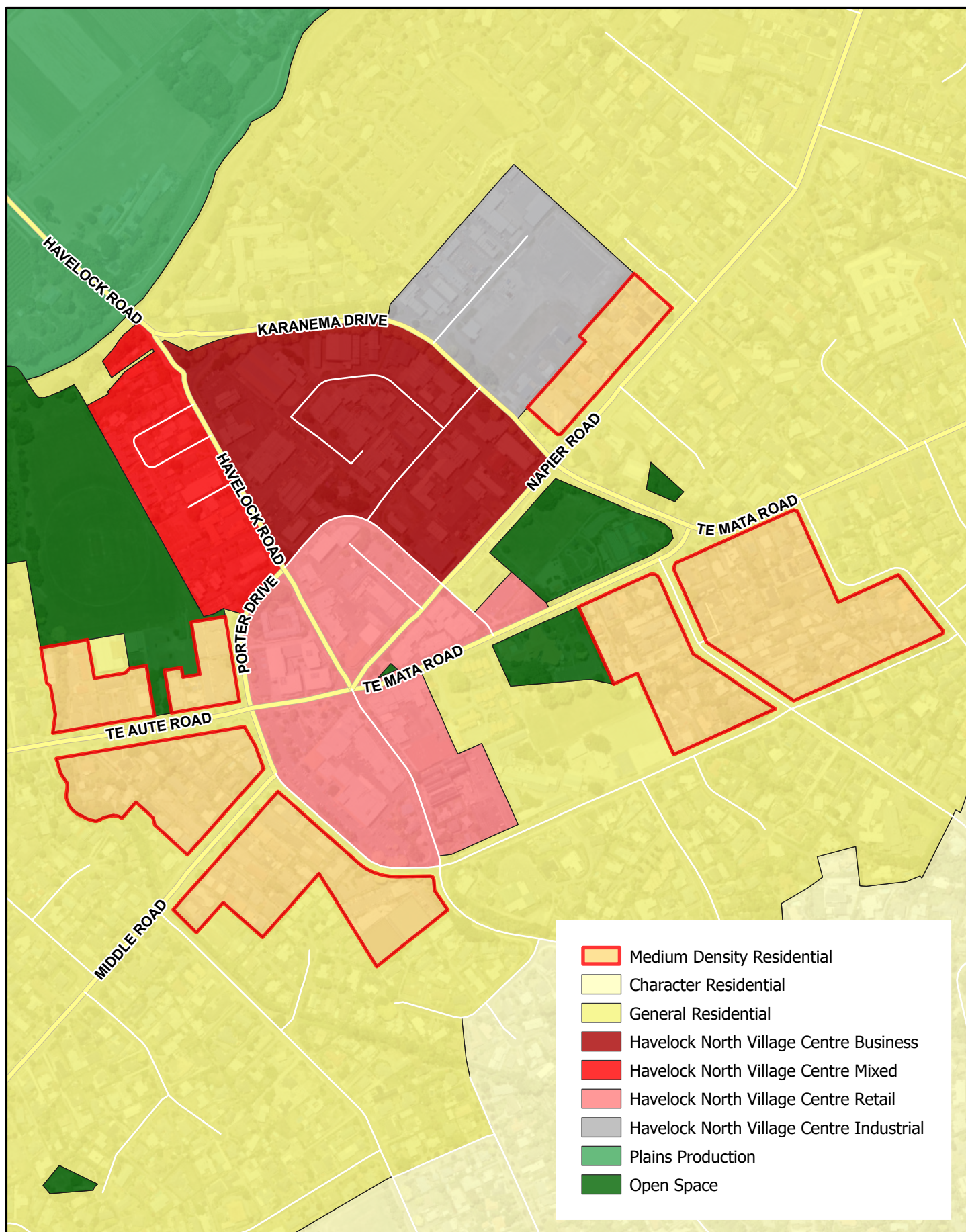
Original Size: A4  
Date: Monday, 15 August 2022

DATA SOURCE: Cadastral information derived from the Land Information New Zealand's Core Record System (CRS).  
CROWN COPYRIGHT RESERVED

COPYRIGHT: Copyright in this drawing is owned by the Hastings District Council. Any unauthorised copying or adaptation of the whole or a substantial part of the work in two or three dimensions is an infringement of copyright.

DISCLAIMER: The Hastings District Council cannot guarantee that the data shown on this map is 100% accurate.





## Plan Change 5 – Medium Density Residential Zone



**HASTINGS**  
DISTRICT COUNCIL  
Te Kaunihera ā-Rohe o Heretaunga

Map Produced using ArcGIS Pro



Scale 1:6,000

0 25 50 100 150 200 250  
Metres

Projection: NZTM  
Datum: D\_NZGD\_2000

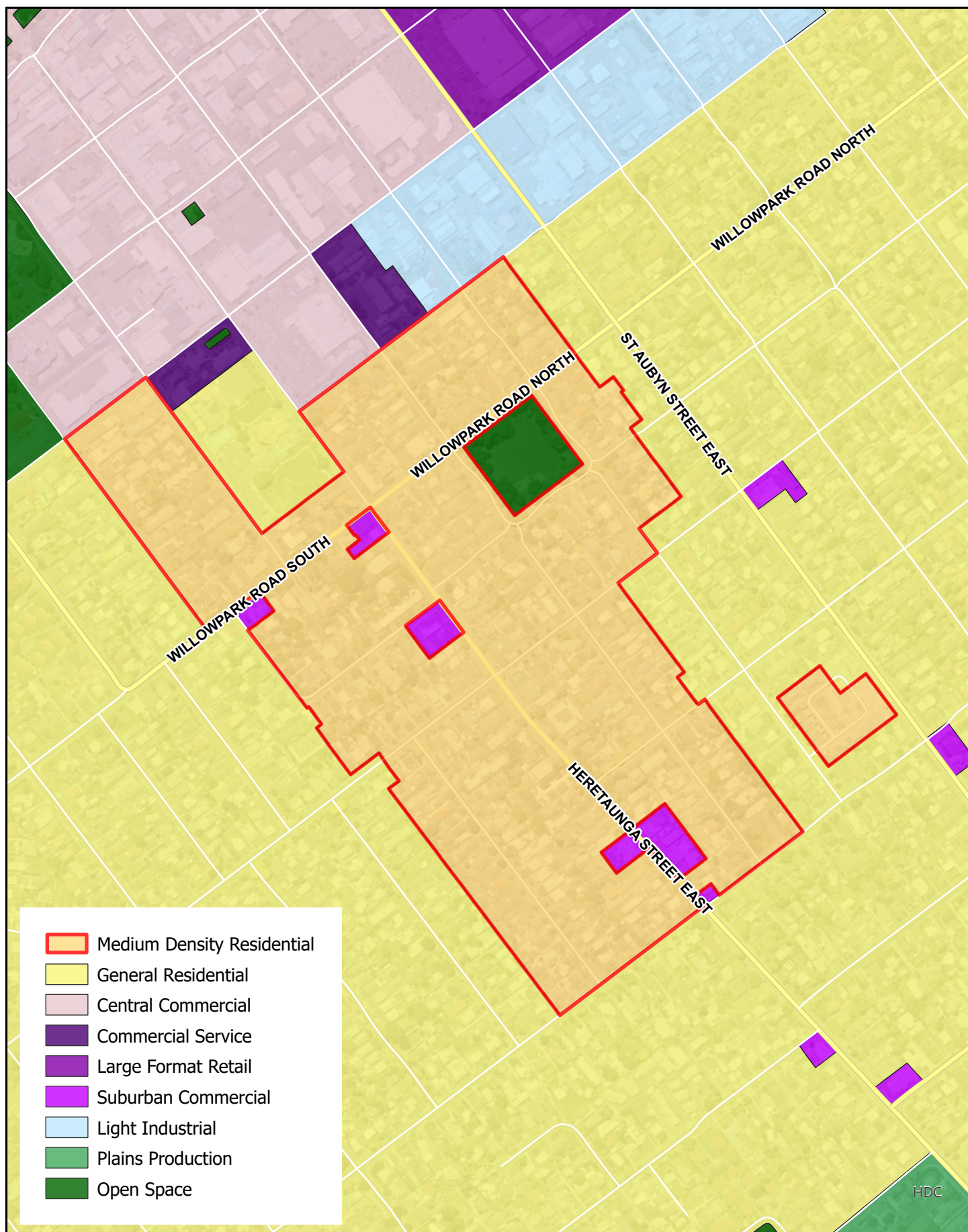
Original Size: A4  
Date: Monday, 15 August 2022

DATA SOURCE: Cadastral information derived from the Land Information New Zealand's Core Record System (CRS).  
CROWN COPYRIGHT RESERVED

COPYRIGHT: Copyright in this drawing is owned by the Hastings District Council. Any unauthorised copying or adaptation of the whole or a substantial part of the work in two or three dimensions is an infringement of copyright.

DISCLAIMER: The Hastings District Council cannot guarantee that the data shown on this map is 100% accurate.





## Plan Change 5 – Medium Density Residential Zone



**HASTINGS**  
DISTRICT COUNCIL  
*Te Kaunihera ā-Rohe o Heretaunga*

Map Produced using ArcGIS Pro



Scale 1:6,000  
0 25 50 100 150 200 250 Metres

Projection: NZTM  
Datum: D\_NZGD\_2000

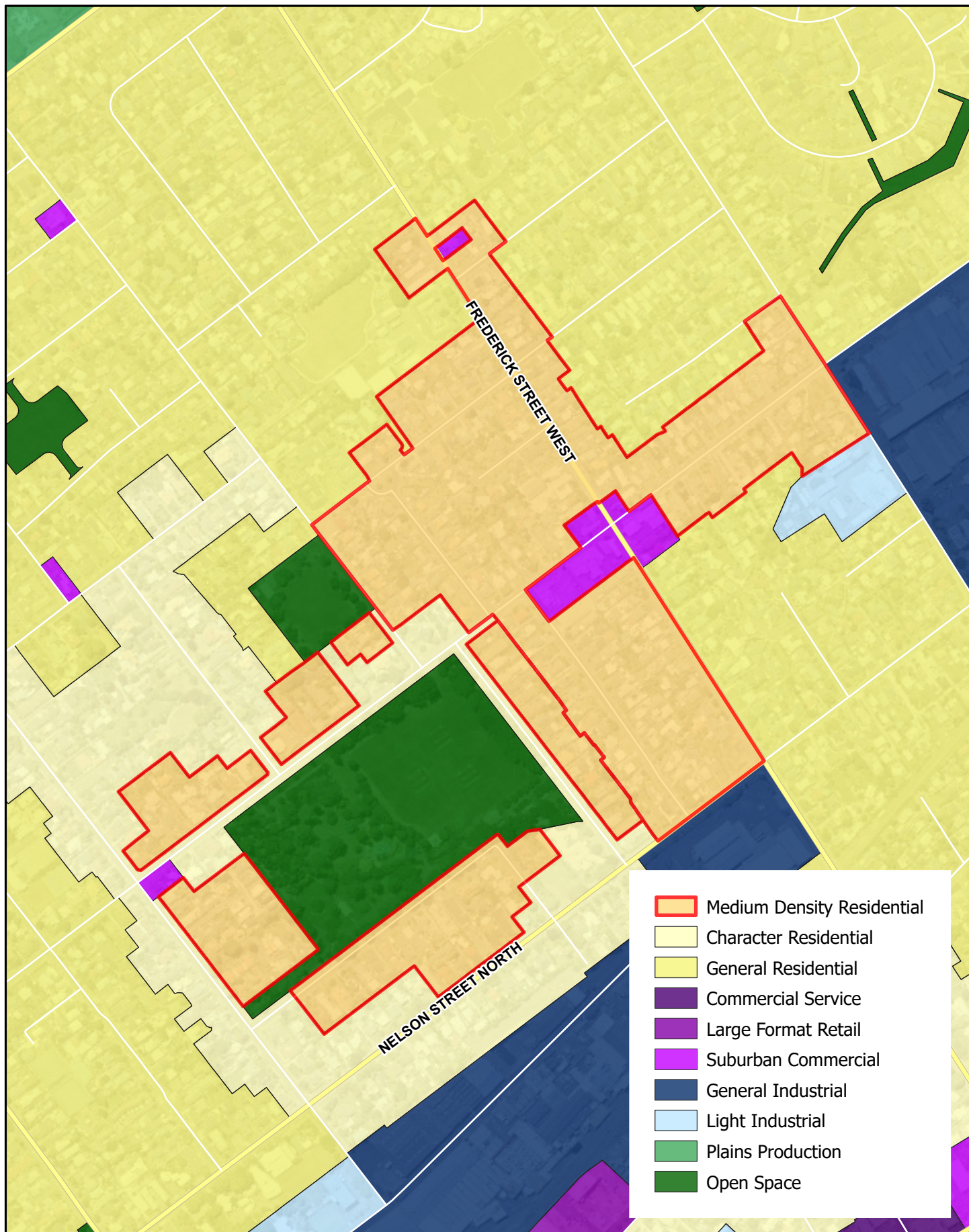
Original Size: A4  
Date: Monday, 15 August 2022

DATA SOURCE: Cadastral information derived from the Land Information New Zealand's Core Record System (CRS). CROWN COPYRIGHT RESERVED

COPYRIGHT: Copyright in this drawing is owned by the Hastings District Council. Any unauthorised copying or adaptation of the whole or a substantial part of the work in two or three dimensions is an infringement of copyright.

DISCLAIMER: The Hastings District Council cannot guarantee that the data shown on this map is 100% accurate.





## Plan Change 5 – Medium Density Residential Zone



**HASTINGS**  
DISTRICT COUNCIL  
Te Kaunihera ā-Rohe o Heretaunga

Map Produced using ArcGIS Pro



Scale 1:6,500

0 30 60 120 180 240 300 Metres

Projection: NZTM  
Datum: D\_NZGD\_2000

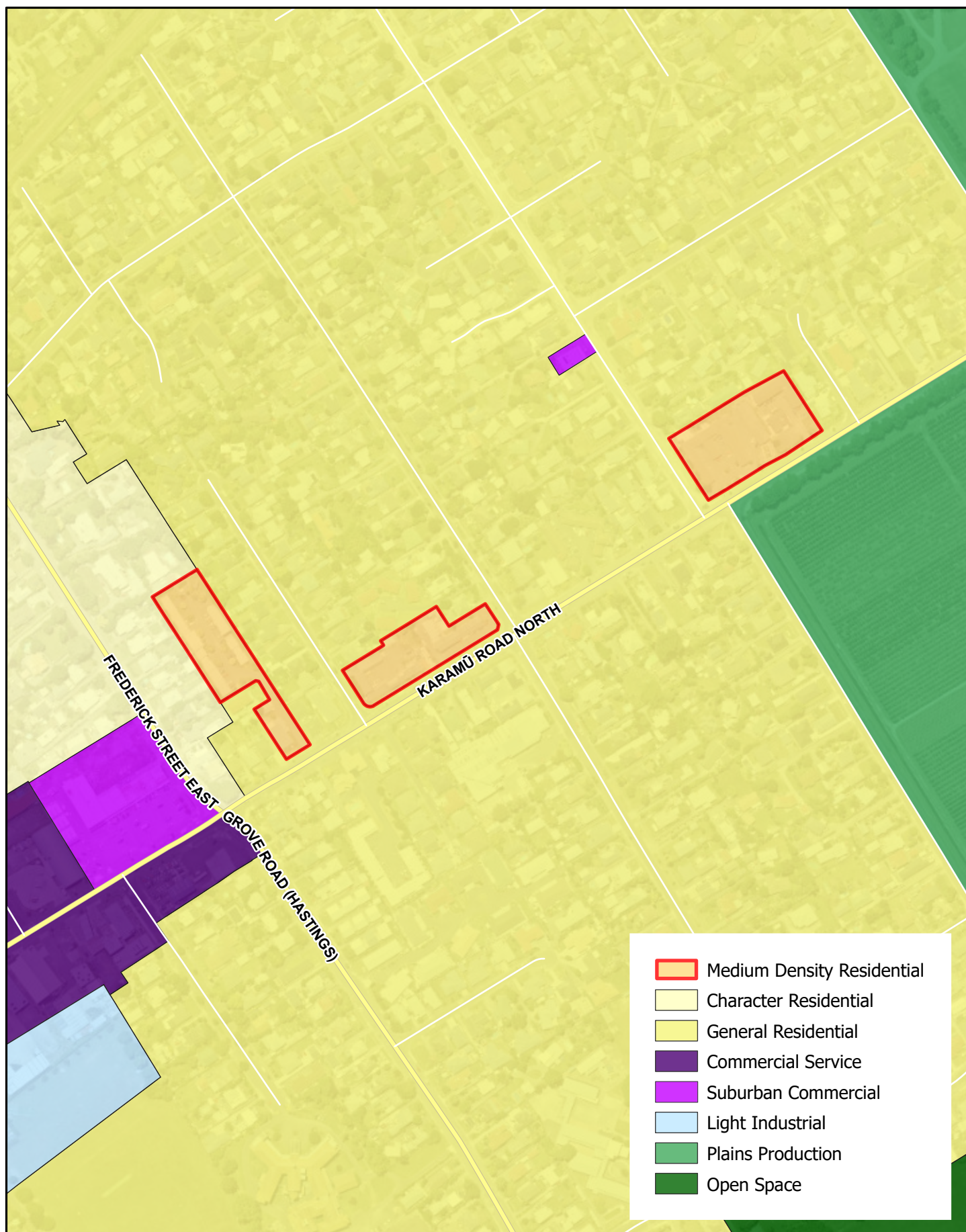
Original Size: A4  
Date: Monday, 15 August 2022

DATA SOURCE: Cadastral information derived from the Land Information New Zealand's Core Record System (CRS).  
CROWN COPYRIGHT RESERVED

COPYRIGHT: Copyright in this drawing is owned by the Hastings District Council. Any unauthorised copying or adaptation of the whole or a substantial part of the work in two or three dimensions is an infringement of copyright.

DISCLAIMER: The Hastings District Council cannot guarantee that the data shown on this map is 100% accurate.





## Plan Change 5 – Medium Density Residential Zone



**HASTINGS**  
DISTRICT COUNCIL  
*Te Kaunihera ā-Rohe o Heretaunga*

Map Produced using ArcGIS Pro



Projection: NZTM  
Datum: D\_NZGD\_2000

Scale 1:4,000

0 15 30 60 90 120 150 Metres

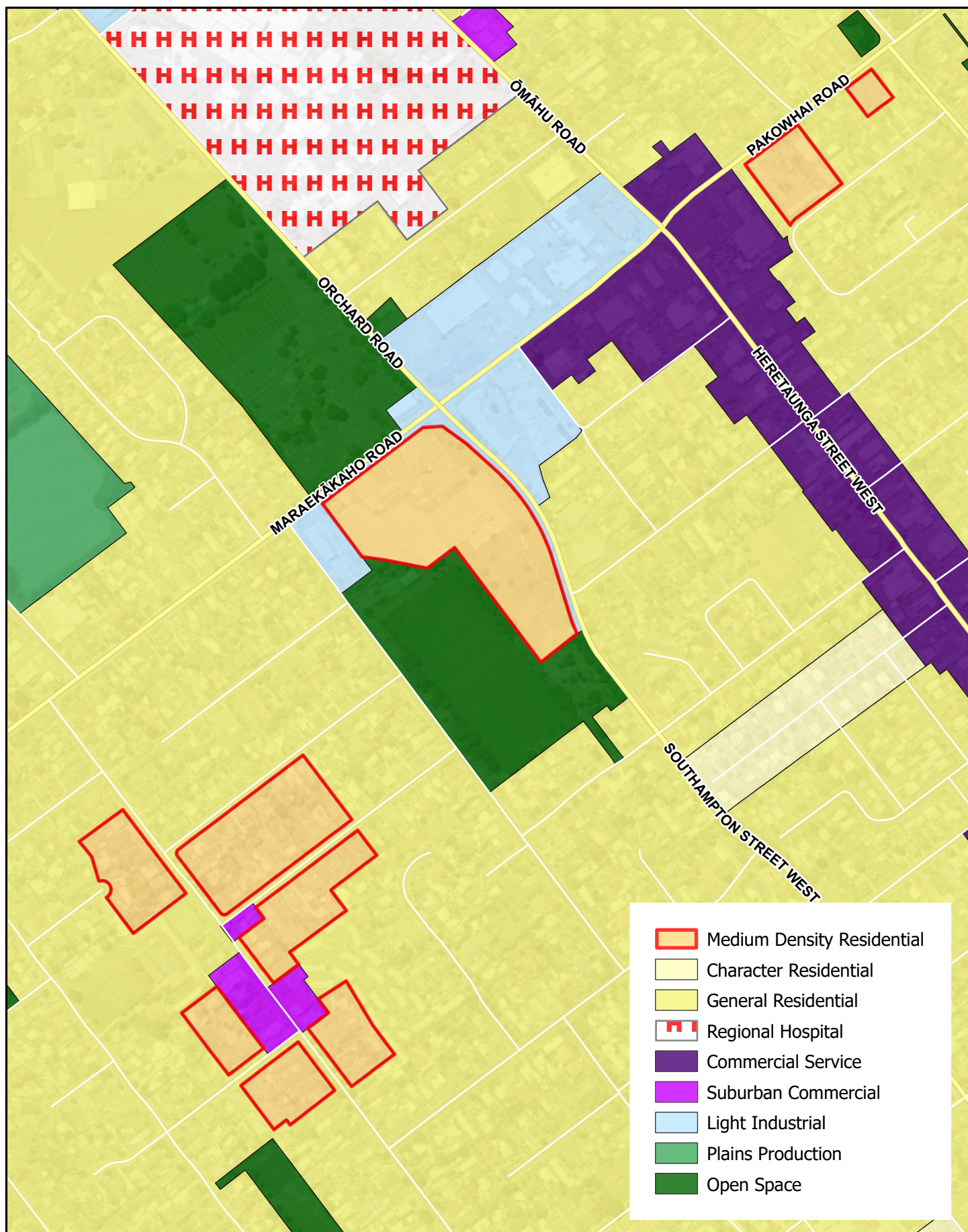
Original Size: A4  
Date: Monday, 15 August 2022

DATA SOURCE: Cadastral information derived from the Land Information New Zealand's Core Record System (CRS).  
CROWN COPYRIGHT RESERVED

COPYRIGHT: Copyright in this drawing is owned by the Hastings District Council. Any unauthorised copying or adaptation of the whole or a substantial part of the work in two or three dimensions is an infringement of copyright.

DISCLAIMER: The Hastings District Council cannot guarantee that the data shown on this map is 100% accurate.





- Medium Density Residential
- Character Residential
- General Residential
- Regional Hospital
- Commercial Service
- Suburban Commercial
- Light Industrial
- Plains Production
- Open Space

## Plan Change 5 – Medium Density Residential Zone



**HASTINGS**  
DISTRICT COUNCIL  
*Te Kaunihera ā-Rohe o Heretaunga*

Map Produced using ArcGIS Pro



Scale 1:6,500

0 30 60 120 180 240 300  
Metres

Projection: NZTM  
Datum: D\_NZGD\_2000

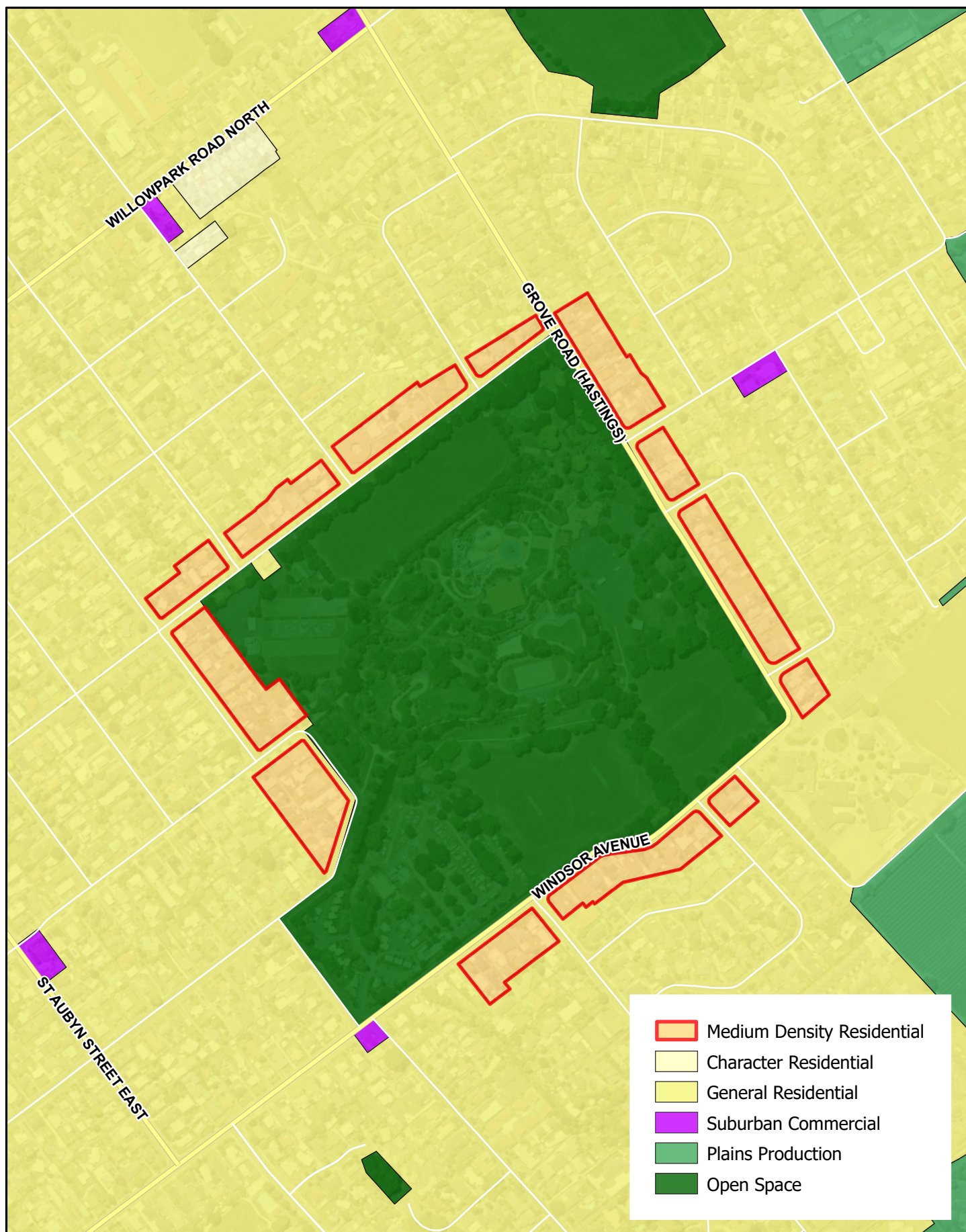
Original Size: A4  
Date: Monday, 15 August 2022

DATA SOURCE: Cadastral information derived from the Land Information New Zealand's Core Record System (CRS).  
CROWN COPYRIGHT RESERVED

COPYRIGHT: Copyright in this drawing is owned by the Hastings District Council. Any unauthorised copying or adaptation of the whole or a substantial part of the work in two or three dimensions is an infringement of copyright.

DISCLAIMER: The Hastings District Council cannot guarantee that the data shown on this map is 100% accurate.





## Plan Change 5 – Medium Density Residential Zone



**HASTINGS**  
DISTRICT COUNCIL  
Te Kaunihera ā-Rohe o Heretaunga

Map Produced using ArcGIS Pro



Scale 1:6,000

0 25 50 100 150 200 250  
Metres

Projection: NZTM  
Datum: D\_NZGD\_2000

Original Size: A4  
Date: Monday, 15 August 2022

DATA SOURCE: Cadastral information derived from the Land Information New Zealand's Core Record System (CRS).  
CROWN COPYRIGHT RESERVED

COPYRIGHT: Copyright in this drawing is owned by the Hastings District Council. Any unauthorised copying or adaptation of the whole or a substantial part of the work in two or three dimensions is an infringement of copyright.

DISCLAIMER: The Hastings District Council cannot guarantee that the data shown on this map is 100% accurate.