

Northern
General Ward
LG-038-2019-W-2

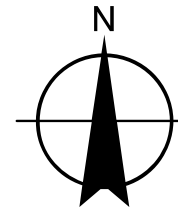
Mohaka
General Ward
LG-030-2022-W-3

Heretaunga
General Ward
LG-030-2022-W-4

Hastings-Havelock
North General Ward
LG-030-2022-W-6

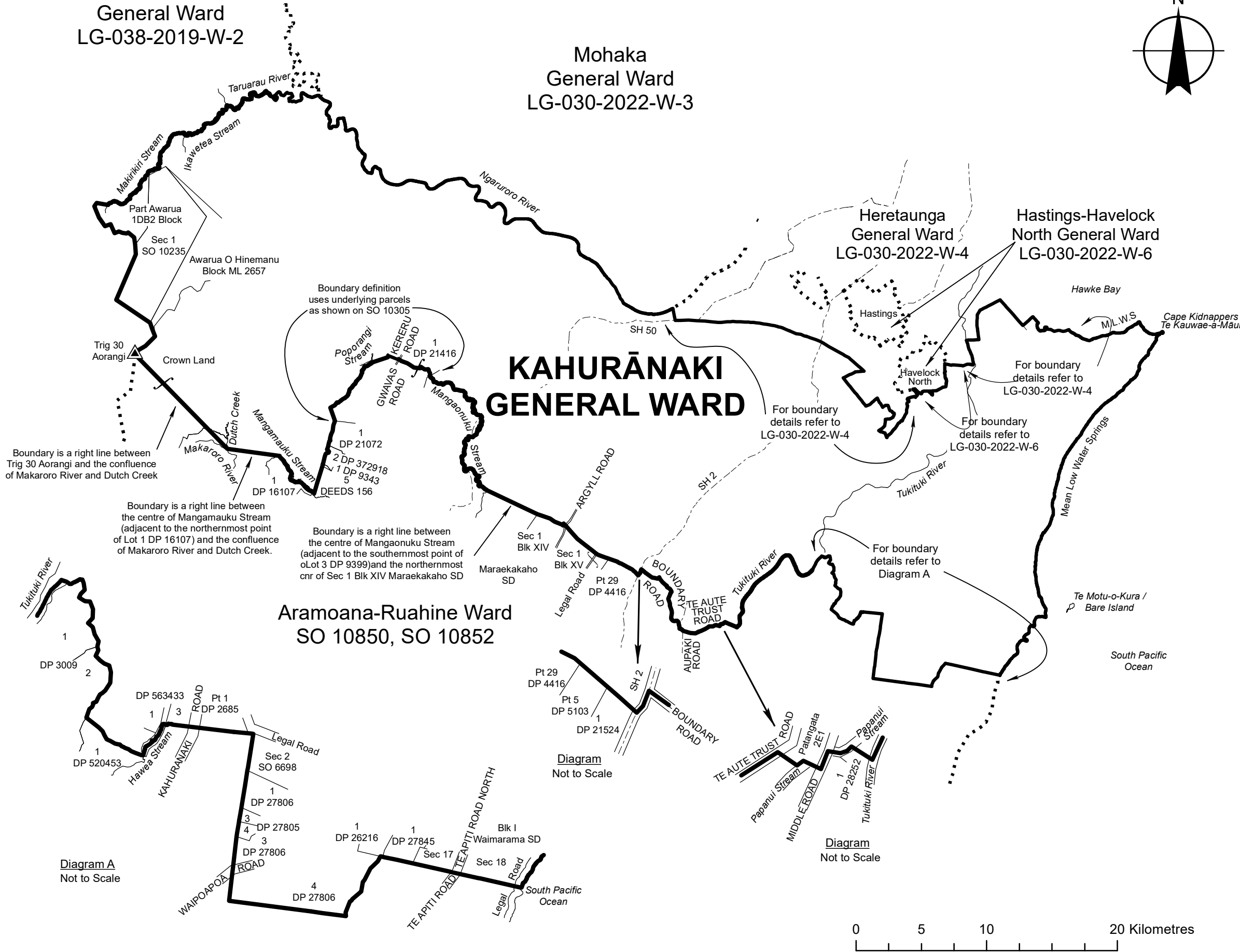
Aramoana-Ruahine Ward
SO 10850, SO 10852

KAHURĀNAKI GENERAL WARD



Notes:

1. Coordinates are in terms of New Zealand Transverse Mercator 2000 (NZTM).
2. Where a boundary is shown along a river or road it follows the middle line of the river or legal road unless otherwise shown.
3. All seaward boundaries follow Mean Low Water Springs but cross the mouths of all rivers, streams, inlets and estuaries except where shown otherwise.

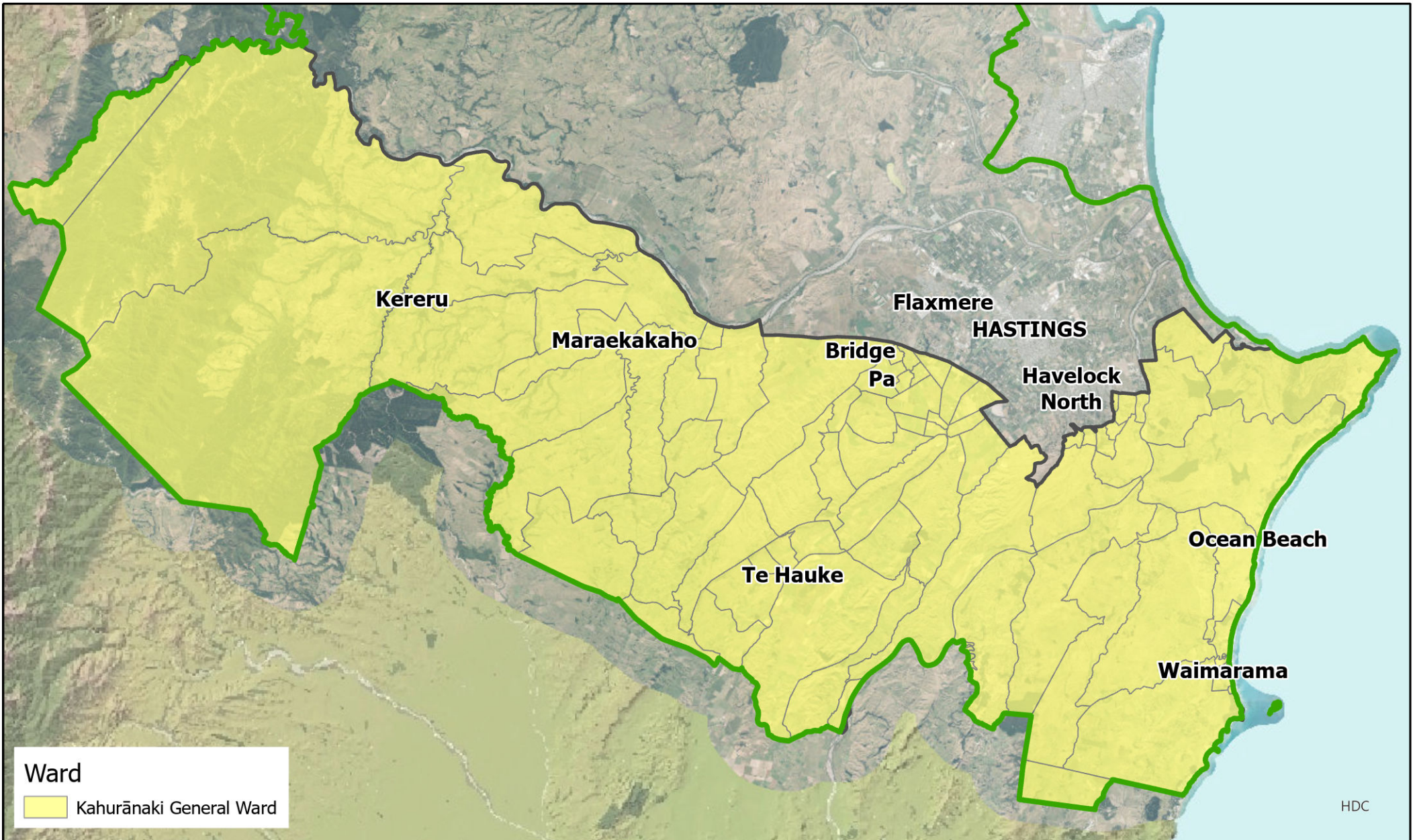


Land District: Hawkes Bay

HASTINGS DISTRICT KAHURĀNAKI GENERAL WARD

TERRITORIAL AUTHORITY: Hastings District
Compiled by Jacobs New Zealand Limited
Scale 1:300,000 at A3 Date May 2022

LG-030-2022-W-7



Ward

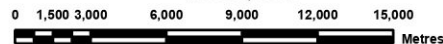
 Kahurānaki General Ward

Representation Review
Kahurānaki Ward (General Ward)

Scale 1:300,000

Date: Thursday, 21 April 2022

Projection: NZTM
 Datum: D_NZGD_2000



Original Size: A4

DATA SOURCE: Cadastral information derived from the Land Information New Zealand's Core Record System (CRS).
 CROWN COPYRIGHT RESERVED

COPYRIGHT: Copyright in this drawing is owned by the Hastings District Council. Any unauthorised copying or adaptation of the whole or a substantial part of the work in two or three dimensions is an infringement of copyright.

DISCLAIMER: The Hastings District Council cannot guarantee that the data shown on this map is 100% accurate.



Map Produced using ArcGIS Pro



HDC